

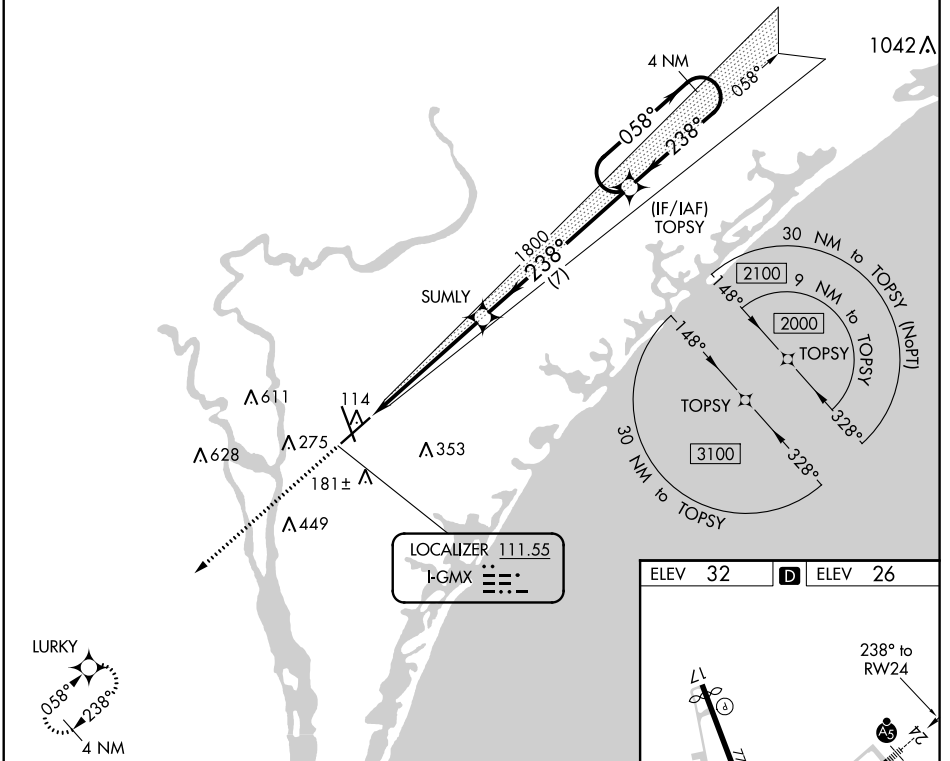
LOC I-GMX <b>111.55</b>	APP CRS <b>238°</b>	Rwy Idg <b>8016</b> TDZE <b>26</b> Apt Elev <b>32</b>
----------------------------	------------------------	-------------------------------------------------------------

# ILS Z RWY 24

WILMINGTON INTL (ILM)

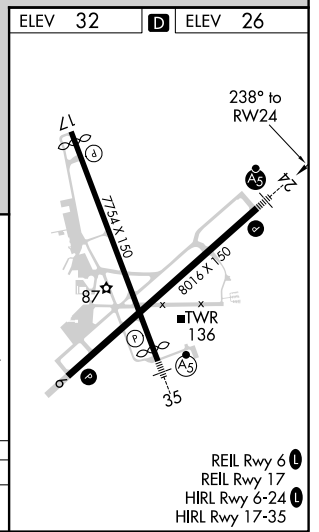
<b>ASR</b> RNAV 1-GPS required. **RVR 1800 authorized with use of FD or AP or HUD to DA.		<b>MALSRR</b> 	<b>MISSED APPROACH:</b> Climb to 3100 direct LURKY and hold.	
<b>ATIS</b> <b>124.975</b>	<b>WILMINGTON APP CON *</b> <b>118.25 284.65</b> (164°-343°) <b>135.75 317.425</b> (344°-163°)	<b>WILMINGTON TOWER *</b> <b>119.9</b> (CTAF) <b>239.3</b>	<b>GND CON</b> <b>121.9 348.6</b>	<b>UNICOM</b> <b>122.95</b>

## RNAV 1-GPS or RADAR REQUIRED



SE-2, 02 DEC 2021 to 30 DEC 2021

SE-2, 02 DEC 2021 to 30 DEC 2021



ELEV 32	<b>D</b>	ELEV 26		
3100	LURKY	VGSI and ILS glidepath not coincident (VGSI Angle 3.00/TCH 48).		
		<b>TOPSY</b> 4 NM Holding Pattern GS 3.00° TCH 52		
CATEGORY	A	B	C	D
S-ILS 24**	226/24 200 (200-1/2)			

- REIL Rwy 6 **1**
- REIL Rwy 17
- HIRL Rwy 6-24 **1**
- HIRL Rwy 17-35