

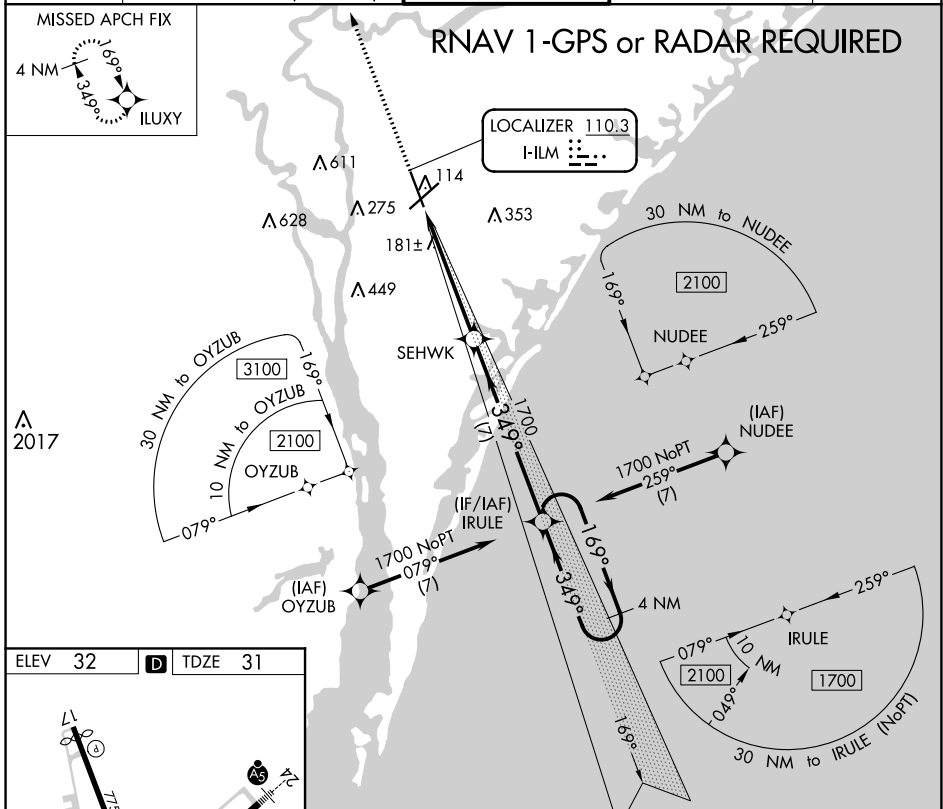
LOC I-ILM 110.3	APP CRS 349°	Rwy Idg 7204 TDZE 31 Apt Elev 32
---------------------------	------------------------	---

ILS Z RWY 35

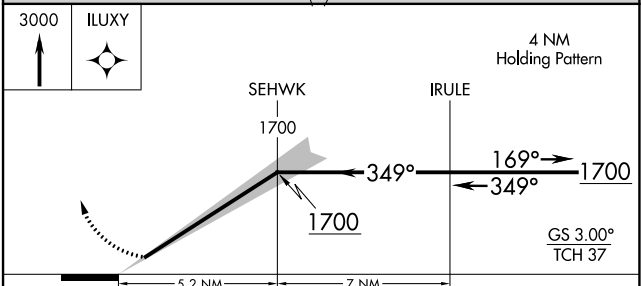
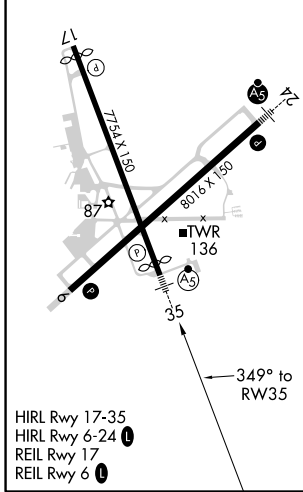
WILMINGTON INTL (ILM)

NA ASR	RNAV 1-GPS required.	MALSR	MISSED APPROACH: Climb to 3000 direct ILUXY and hold.
-----------	----------------------	-------	---

ATIS 124.975	WILMINGTON APP CON ★ 118.25 284.65 (164°-343°) 135.75 317.425 (344°-163°)	WILMINGTON TOWER ★ 119.9 (CTAF) 239.3	GND CON 121.9 348.6	UNICOM 122.95
------------------------	---	--	-------------------------------	-------------------------



ELEV 32	D	TDZE 31
---------	---	---------



CATEGORY	A	B	C	D
S-ILS 35	242/24 211 (300-½)			

SE-2, 02 DEC 2021 to 30 DEC 2021

SE-2, 02 DEC 2021 to 30 DEC 2021