

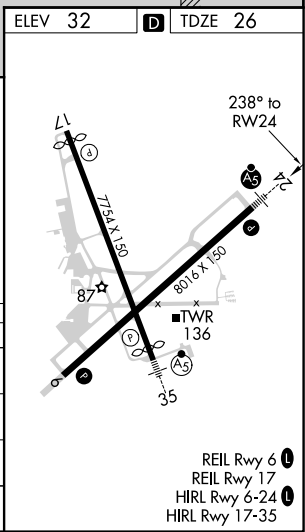
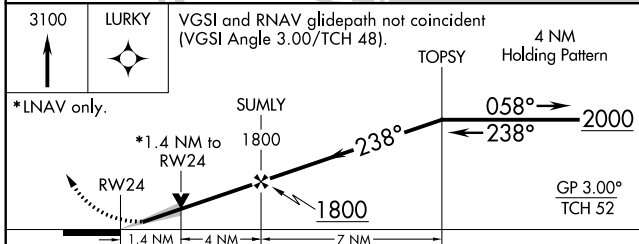
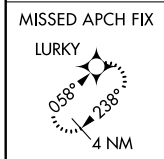
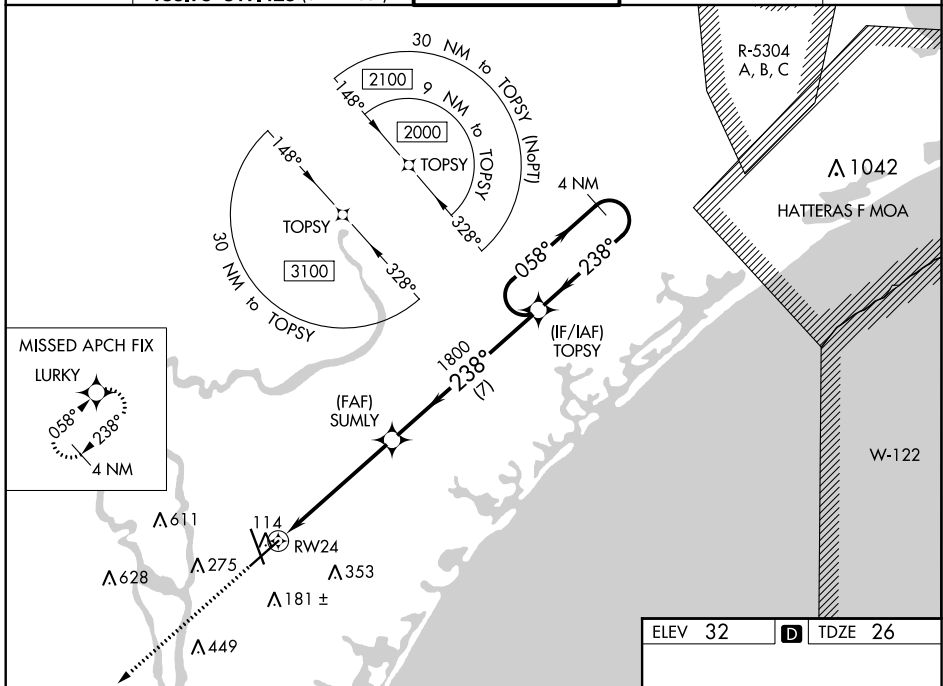
WAAS CH <b>45899</b> <b>W24A</b>	APP CRS <b>238°</b>	Rwy Idg TDZE Apt Elev	<b>8016</b> <b>26</b> <b>32</b>
--	------------------------	-----------------------------	---------------------------------------

# RNAV (GPS) RWY 24

WILMINGTON INTL (ILM)

<p>ASR</p>	<p>For uncompensated Baro-VNAV systems, LNAV/VNAV NA below -7°C (20°F) or above 54°C (130°F). DME/DME RNP-0.3 NA. ** RVR 1800 authorized with use of FD or AP or HUD to DA.</p>	<p>MALSR</p>	<p>MISSED APPROACH: Climb to 3100 direct LURKY and hold.</p>

ATIS <b>124.975</b>	<p>WILMINGTON APP CON *</p> <p><b>118.25 284.65</b> (164°-343°) <b>135.75 317.425</b> (344°-163°)</p>	<p>WILMINGTON TOWER *</p> <p><b>119.9</b>(CTAF) <b>239.3</b></p>	GND CON <b>121.9 348.6</b>	UNICOM <b>122.95</b>
------------------------	---	--	-------------------------------	-------------------------



CATEGORY	A	B	C	D
LPV DA **	226/24 200 (200-½)			
LNAV/VNAV DA	401/40 375 (400-¾)			
LNAV MDA	500/24 474 (500-½)		500/50 474 (500-1)	
CIRCLING	560-1 528 (600-1)		720-2 688 (700-2)	920-3 888 (900-3)

- REIL Rwy 6
- REIL Rwy 17
- HIRL Rwy 6-24
- HIRL Rwy 17-35

SE-2, 02 DEC 2021 to 30 DEC 2021

SE-2, 02 DEC 2021 to 30 DEC 2021