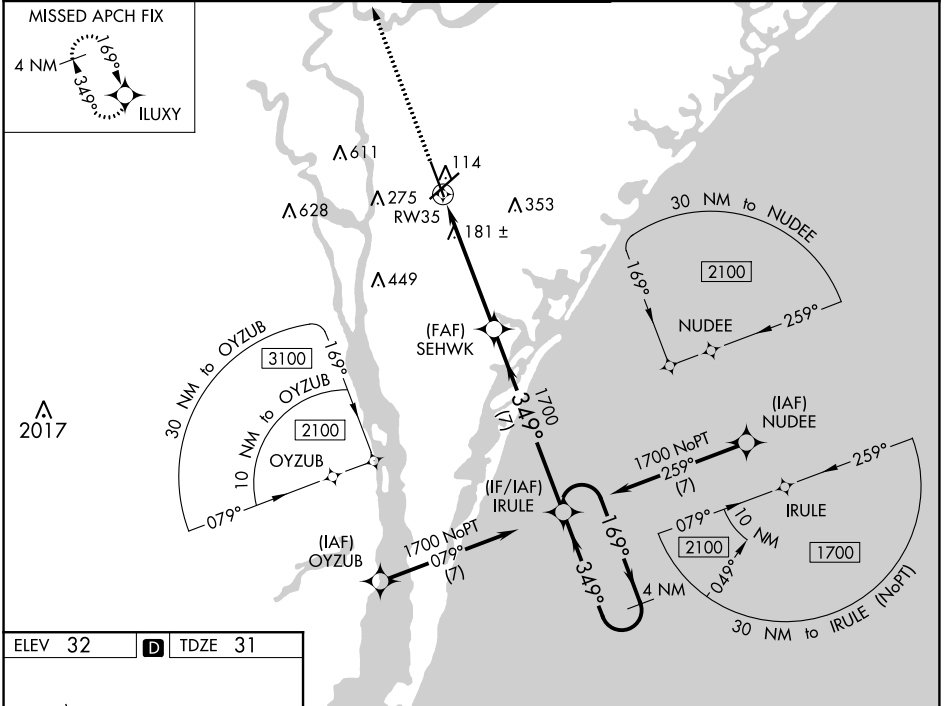


WAAS CH <b>50499</b> <b>W35A</b>	APP CRS <b>349°</b>	Rwy Idg <b>7204</b> TDZE <b>31</b> Apt Elev <b>32</b>
--	------------------------	---

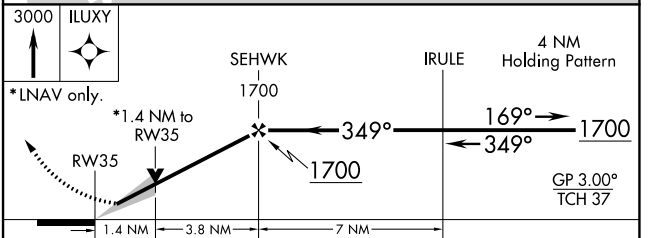
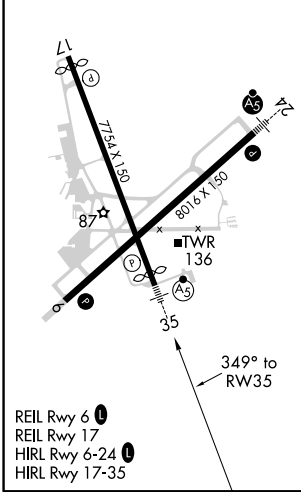
# RNAV (GPS) RWY 35

WILMINGTON INTL (ILM)

For uncompensated Baro-VNAV systems, LNAV/VNAV NA below -7°C (20°F) or above 54°C (130°F). DME/DME RNP-0.3 NA. For inop ALS, increase LNAV Cats C/D visibility to 1 3/8 SM. ASR	MALS R	MISSED APPROACH: Climb to 3000 direct ILUXY and hold.		
	ATIS <b>124.975</b>	WILMINGTON APP CON ★ <b>118.25 284.65</b> (164°-343°) <b>135.75 317.425</b> (344°-163°)	WILMINGTON TOWER ★ <b>119.9</b> (CTAF) <b>0 239.3</b>	GND CON <b>121.9 348.6</b>



ELEV <b>32</b>	<b>D</b>	TDZE <b>31</b>
----------------	----------	----------------



CATEGORY	A	B	C	D
LPV DA		242/24	211 (300-1/2)	
LNAV/VNAV DA		426/45	395 (400-7/8)	
LNAV MDA	500/24	469 (500-1/2)	500/50	469 (500-1)
CIRCLING	560-1	528 (600-1)	720-2 688 (700-2)	920-3 888 (900-3)

SE-2, 02 DEC 2021 to 30 DEC 2021

SE-2, 02 DEC 2021 to 30 DEC 2021