

WAAS CH <b>93831</b> <b>W13A</b>	APP CRS <b>132°</b>	Rwy Idg TDZE Apt Elev	<b>5003</b> <b>2822</b> <b>2822</b>
--	------------------------	-----------------------------	---

# RNAV (GPS) RWY 13

WINKLER COUNTY (INK)

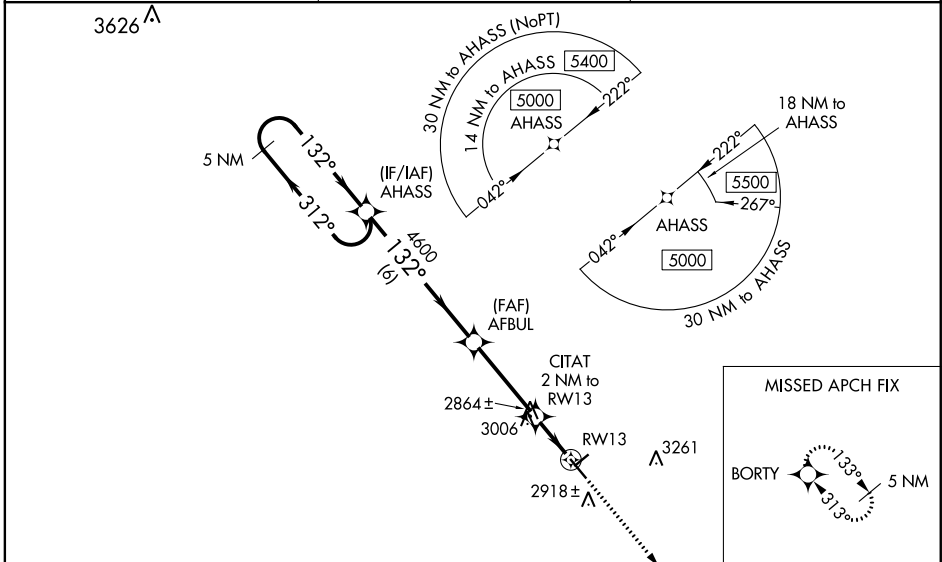
RNP APCH.

**▽** Baro-VNAV NA when using Pecos altimeter setting. For uncompensated Baro-VNAV systems, LNAV/VNAV NA below -20°C or above 54°C. VDP NA with Pecos altimeter setting.

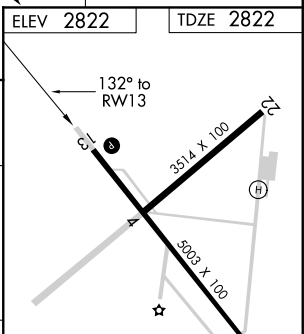
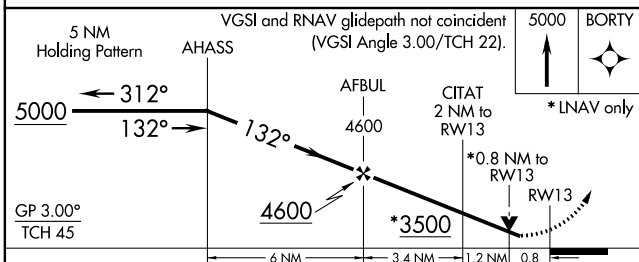
**▲** Helicopter visibility reduction below ¾ SM NA. When local altimeter setting not received, use Pecos altimeter setting: Increase DA to 3167 feet and LPV and LNAV/VNAV all Cats visibility ¾ SM; increase all MDAs 100 feet and LNAV and Circling Cat C visibility ¼ SM.

MISSED APPROACH: Climb to 5000 direct BORTY and hold.

ASOS <b>118.325</b>	FORT WORTH CENTER <b>133.1 298.95</b>	UNICOM <b>123.0 (CTAF) 0</b>
------------------------	--	---------------------------------



ELEV 2822	TDZE 2822
-----------	-----------



CATEGORY	A	B	C	D
LPV DA	3072-¾ 250 (300-¾)			NA
LNAV/VNAV DA	3072-¾ 250 (300-¾)			NA
LNAV MDA	3320-1	498 (500-1)	3320-1½ 498 (500-1½)	NA
CIRCLING	3320-1	498 (500-1)	3580-2¼ 758 (800-2¼)	NA

MRL Rwys 4-22 and 13-31 0

SC-3, 02 DEC 2021 to 30 DEC 2021

SC-3, 02 DEC 2021 to 30 DEC 2021