

WAAS CH <b>56233</b> <b>W31A</b>	APP CRS <b>313°</b>	Rwy Idg TDZE Apt Elev	<b>5003</b> <b>2818</b> <b>2822</b>
--	------------------------	-----------------------------	---

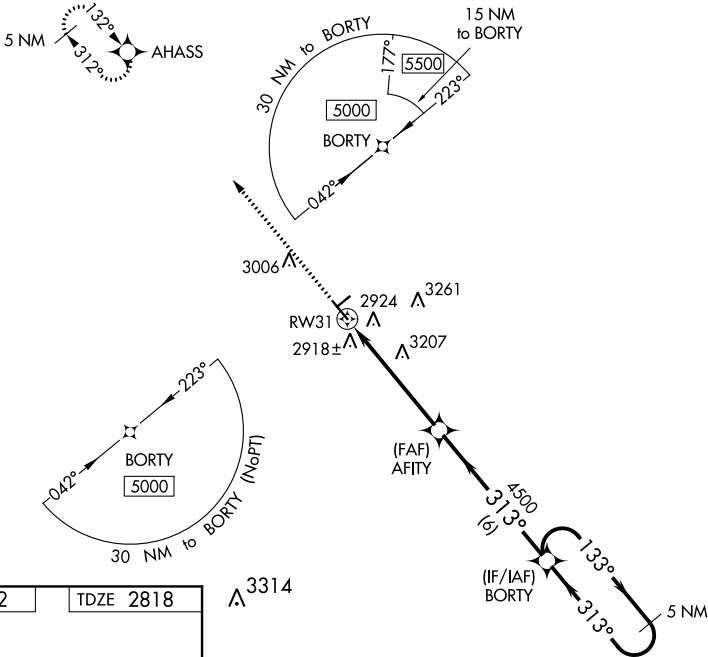
# RNAV (GPS) RWY 31

WINKLER COUNTY (INK)

**▼** Baro-VNAV NA when using Pecos altimeter setting. For uncompensated Baro-VNAV systems, LNAV/VNAV NA below -20°C (-4°F) or above 54°C (130°F). DME/DME RNP-0.3 NA. VDP NA with Pecos altimeter setting. When local altimeter setting not received, use Pecos altimeter setting and increase all DA 95 feet and all MDA 100 feet. Increase LPV all Cats visibility ¼ mile, LNAV/VNAV all Cats visibility ⅓ mile, LNAV Cat B visibility ¼ mile, LNAV Cat C visibility ½ mile and Circling Cats B and C visibility ¼ mile.

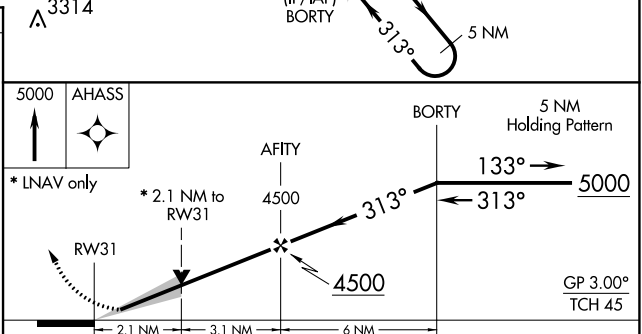
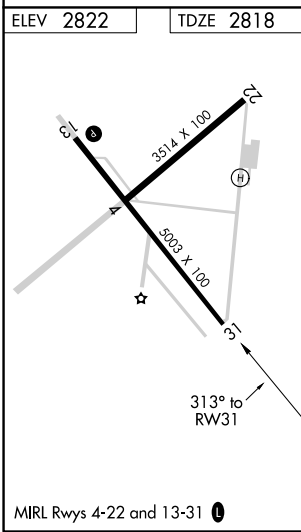
**MISSED APPROACH:**  
Climb to 5000 direct AHASS and hold.

ASOS <b>118.325</b>	FORT WORTH CENTER <b>133.1 298.95</b>	UNICOM <b>123.0 (CTAF) ①</b>
------------------------	--	---------------------------------



SC-3, 02 DEC 2021 to 30 DEC 2021

SC-3, 02 DEC 2021 to 30 DEC 2021



CATEGORY	A	B	C	D
LPV DA	3018-¾ 200 (200-¾)			NA
LNAV/VNAV DA	3130-1 312 (400-1)			NA
LNAV MDA	3520-1	702 (700-1)	3520-2 702 (700-2)	NA
CIRCLING	3520-1	698 (700-1)	3580-2¼ 758 (800-2¼)	NA