

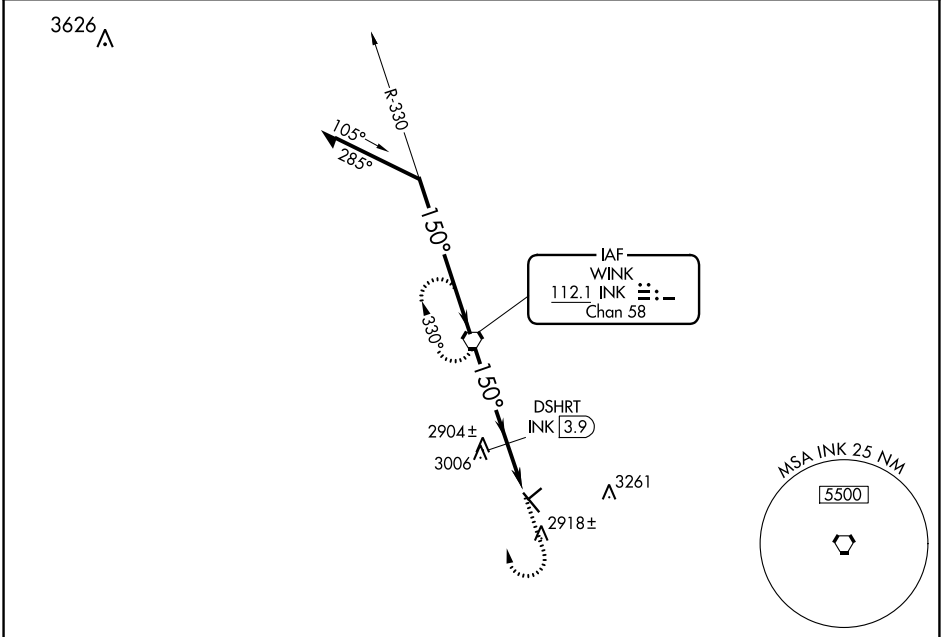
VORTAC INK 112.1 Chan 58	APP CRS 150°	Rwy Idg TDZE Apt Elev	5003 2822 2822
--	------------------------	-----------------------------	---

VOR RWY 13
WINKLER COUNTY (INK)

⚠ When local altimeter setting not received, use Pecos altimeter setting and increase all MDAs 100 feet and Cat C visibility ¼ mile and increase DSHRT Fix: all MDA 100 feet and S-13 Cat C visibility ¼ mile. VDP NA when using Pecos altimeter setting.

MISSED APPROACH: Climb to 3500 then climbing right turn to 5000 direct INK VORTAC and hold.

ASOS 118,325	FORT WORTH CENTER 133.1 298.95	UNICOM 123.0 (CTAF) 0
------------------------	--	---------------------------------



SC-3, 02 DEC 2021 to 30 DEC 2021

SC-3, 02 DEC 2021 to 30 DEC 2021

Remain within 10 NM		*3440 when using Pecos altimeter setting.		3500	5000	INK
5000	330°	INK VORTAC	DSHRT INK 3.9	↑	↷	⬡
4700	150°	2.99° TCH 40	1 NM to RWY 13 INK 4.8	INK 5.8		
VGSI and descent angles not coincident (VGSI Angle 3.00/TCH 22).		*3340				
		3.9 NM	0.9	1 NM		
CATEGORY	A	B	C	D		
S-13	3340-1	518 (600-1)	3340-1½ 518 (600-1½)	NA		
CIRCLING	3340-1	518 (600-1)	3340-1½ 518 (600-1½)	NA		
DSHRT FIX MINIMUMS						
S-13	3160-1 338 (400-1)			NA		
CIRCLING	3280-1 458 (500-1)	3300-1 478 (500-1)	3300-1½ 478 (500-1½)	NA		

