


ILS or LOC RWY 23

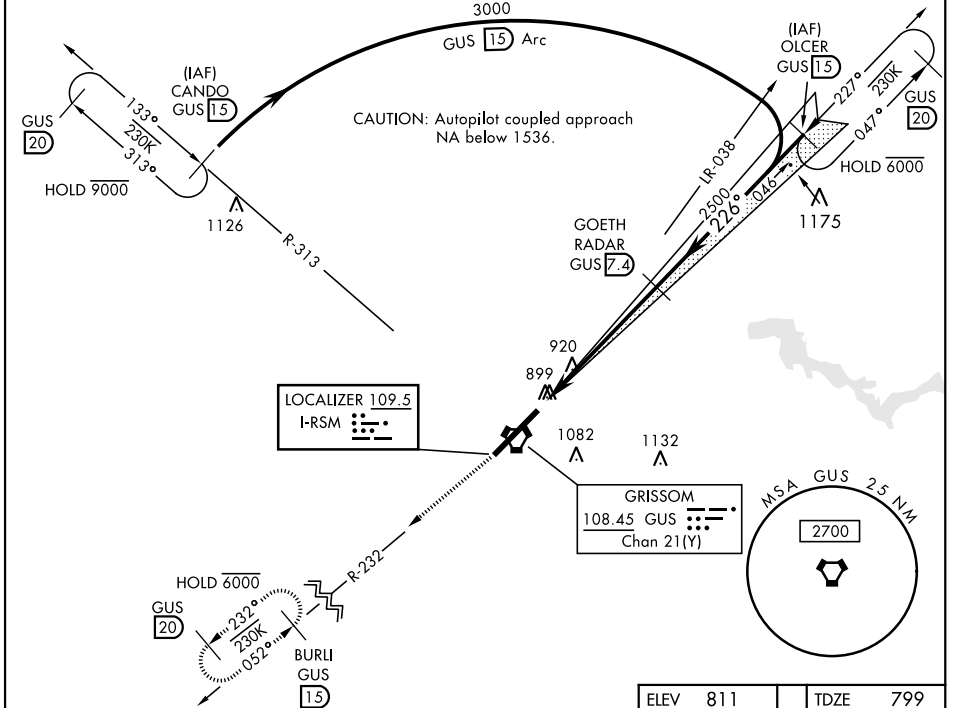
LOC I-RSM 109.5	APCH CRS 226°	Rwy Idg 12,501 TDZE 799 Arprt Elev 811	AL-470 [USAF]	GRISSOM ARB (KGUS)
---------------------------	-------------------------	--	---------------	--------------------

RADAR, DME required.

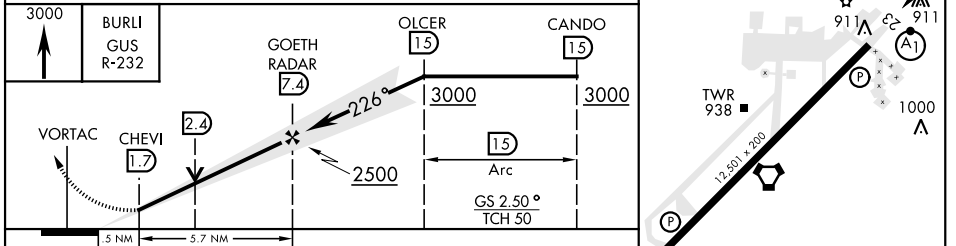
*When ALS inop, increase RVR to 40 and vis to 3/4 mile.
 ** When ALS inop, increase CAT AB RVR to 55 and vis to 1 mile,
 CAT CDE RVR to 60 and vis to 1 1/2 miles.

ALSF-1  MISSED APPROACH: Climb to 3000 on the GUS R-232 to BURLI (GUS R-232/15 DME) and hold.

ATIS 108.45 270.8	GRISSOM APP CON 121.05 338.275 EAST 123.85 291.675 WEST	GRISSOM TOWER ★ 133.7 290.45	GND CON 128.425 275.8	CLNC DEL 128.425 275.8
-----------------------------	---	--	---------------------------------	----------------------------------



ELEV 811	TDZE 799
----------	----------



CATEGORY	A	B	C	D	E
S-ILS 23*	999/24		200	(200-1/2)	
S-LOC 23**	1180/24	381 (400-1/2)	1180/35	381	(400-3/4)
CIRCLING	1340-1	529 (600-1)	1400-1 1/2	1400-2	1440-2 1/4
			589 (600-1 1/2)	589 (600-2)	629 (700-2 1/4)

HIRL Rwy 5-23

FAF to MAP 5.7 NM					
Knots	60	90	120	150	180
Min:Sec	5:42	3:48	2:51	2:17	1:54

ILS or LOC RWY 23

EC-2, 02 DEC 2021 to 30 DEC 2021

EC-2, 02 DEC 2021 to 30 DEC 2021