

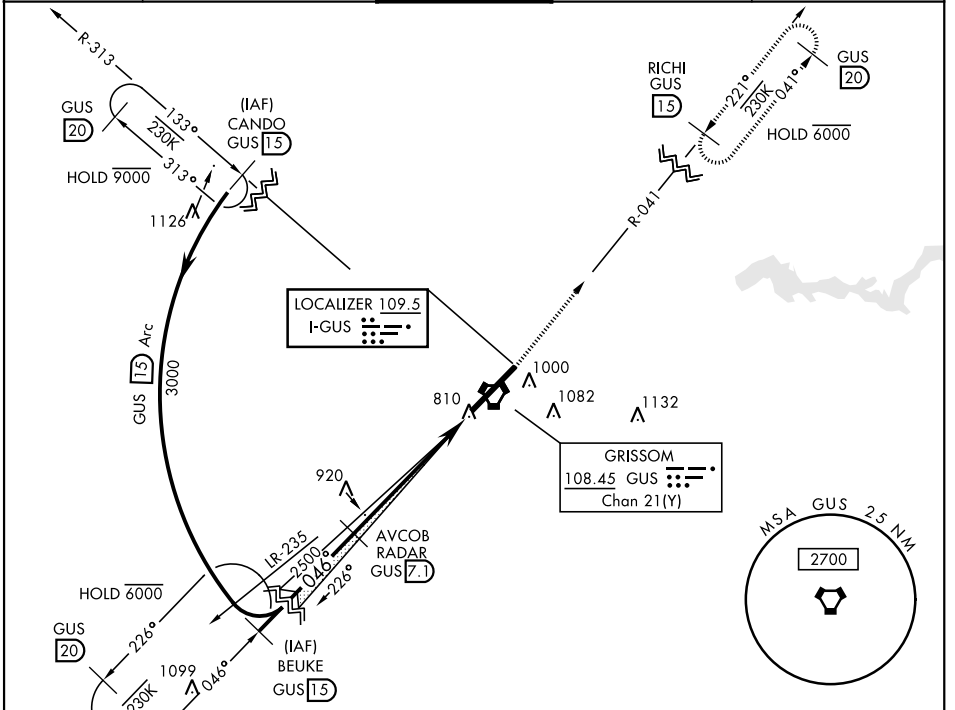
# ILS or LOC RWY 5

LOC I-GUS <b>109.5</b>	APCH CRS <b>046°</b>	Rwy ldg TDZE Arprt Elev <b>12,501</b> <b>811</b> <b>811</b>	AL-470 [USAF]	GRISSOM ARB (KGUS)
---------------------------	-------------------------	--	---------------	--------------------

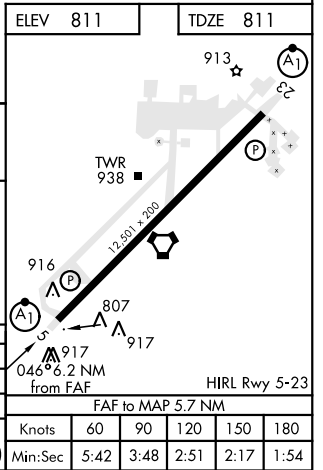
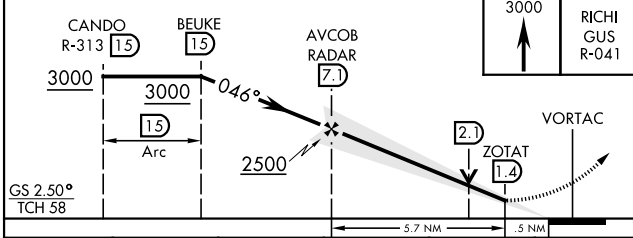
RADAR, DME required.

\* When ALS inop, increase RVR to 40 and vis to ¾ mile.  
 \*\* When ALS inop, increase RVR to 55 and vis to 1 mile.

ATIS <b>108.45 270.8</b>	GRISSOM APP CON <b>121.05 338.275 EAST</b> <b>123.85 291.675 WEST</b>	GRISSOM TOWER * <b>133.7 290.45</b>	GND CON <b>128.425 275.8</b>	CLNC DEL <b>128.425 275.8</b>
-----------------------------	---	--	---------------------------------	----------------------------------



EMERG SAFE ALT 100 NM 3500



CATEGORY	A	B	C	D	E	HIRL Rwy 5-23 FAF to MAP 5.7 NM
	S-ILS 5*	1011/24		200	(200-½)	
S-LOC 5**	1180/24	369 (400-½)	1180/35 369 (400-¾)			
CIRCLING	1340-1	529 (600-1)	1400-1½	1400-2	1440-2¼	
			589 (600-½)	589 (600-2)	629 (700-2¼)	
Knots		60	90	120	150	180
Min:Sec		5:42	3:48	2:51	2:17	1:54

# ILS or LOC RWY 5

EC-2, 02 DEC 2021 to 30 DEC 2021

EC-2, 02 DEC 2021 to 30 DEC 2021