

PERU, INDIANA

RNAV (GPS) RWY 23

21140

APCH CRS	Rwy Idg	12,501
226°	TDZE	799
	Arpt Elev	811

AL-470 (USAF)

GRISSOM ARB (KGUS)

* When ALS inop, increase CAT AB RVR to 55 and vis to 1 mile, CAT CDE vis to 1 1/4 miles.

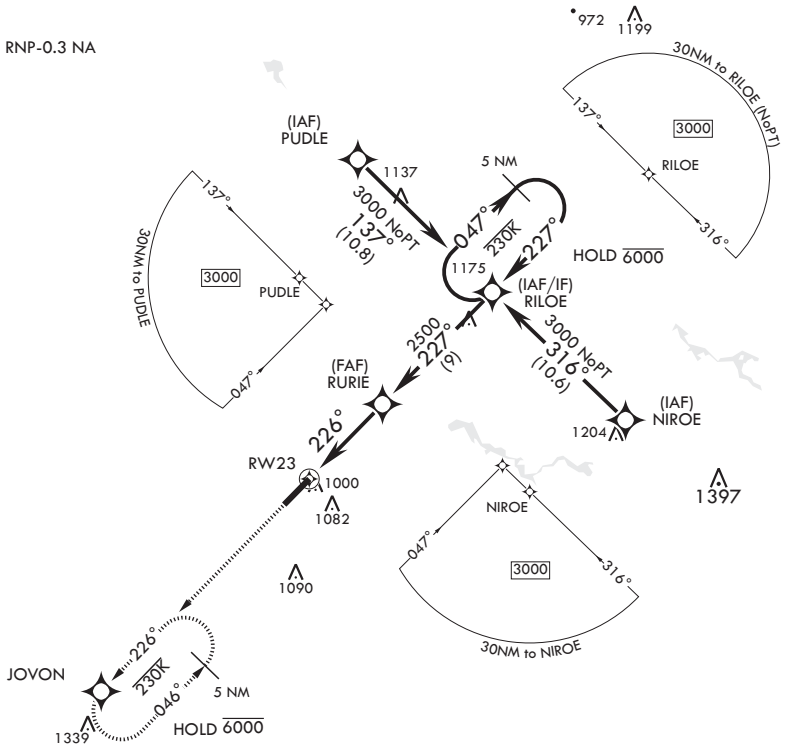
ALSF-1



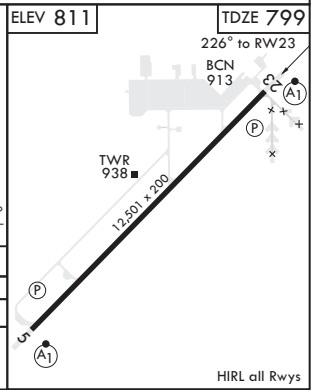
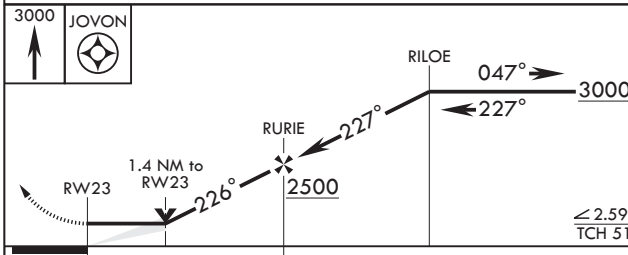
MISSED APPROACH: Climb to 3000 direct JOVON and hold.

ATIS 108.45 270.8	APP CON/DEP CON 121.05 338.275 E 123.85 291.675 W	TOWER 133.7 290.45	GND CON 128.425 275.8	CLNC DEL 128.425 275.8
----------------------	---	-----------------------	--------------------------	---------------------------

RNP APCH
DME/DME RNP-0.3 NA



EMERG SAFE ALT 100 NM 3500



CATEGORY	A	B	C	D	E
LNVA MDA*	1220/24 421 (500-½)		1220/40 421		500-¾)
CIRCLING	1340-1 529 (600-1)		1400-1½ 589 (600-1½)	1400-2 589 (600-2)	1440-2¼ 629 (700-2¼)

PERU, INDIANA
Amdt 5 31JAN19

40°39'N - 86°09'W

GRISSOM ARB (KGUS)

RNAV (GPS) RWY 23

EC-2, 02 DEC 2021 to 30 DEC 2021

EC-2, 02 DEC 2021 to 30 DEC 2021