

PERU, INDIANA

TACAN or VOR RWY 5

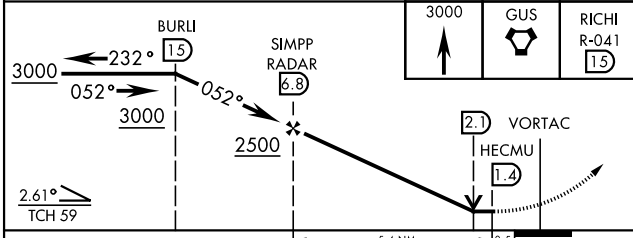
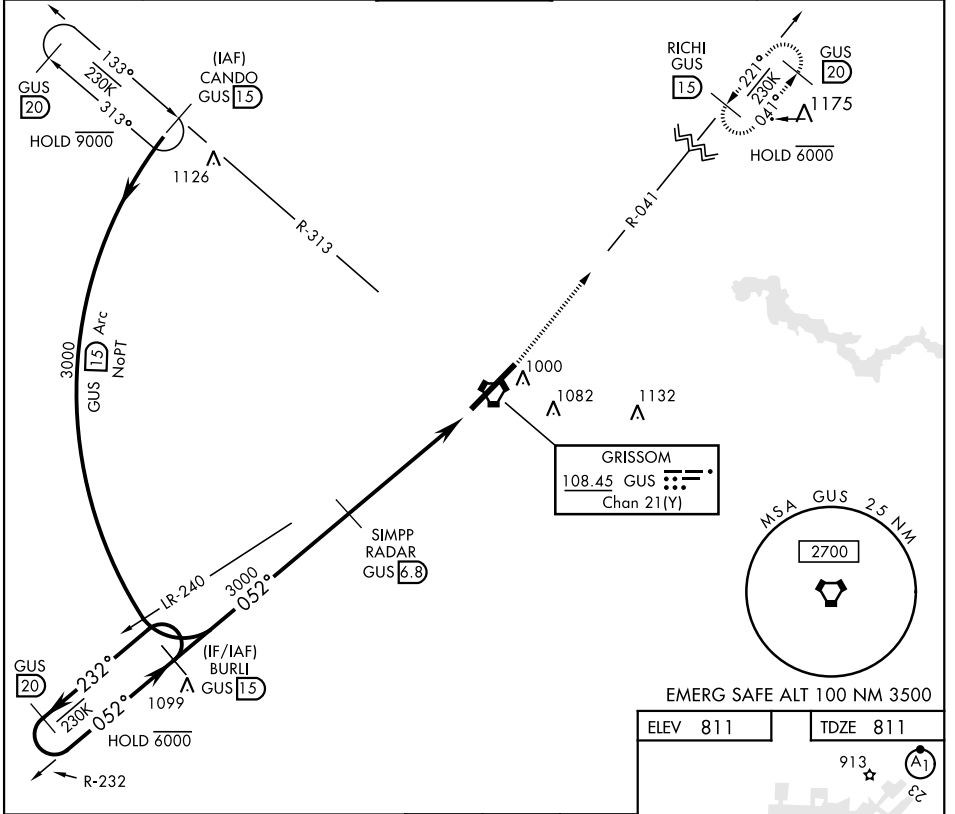
VORTAC GUS 108.45 Chan 21 (Y)	APCH CRS 052°	Rwy Idg 12,501 TDZE 811 Arpt Elev 811
---	-------------------------	--

AL-470 [USAF]

GRISSOM ARB (KGUS)

RADAR, DME required.	ALSF-1 	MISSED APPROACH: Climb to 3000 on the GUS VORTAC R-041 to RICHI (GUS R-041/15 DME) and hold.
----------------------	------------	--

ATIS 108.45 270.8	GRISSOM APP CON 121.05 338.275 EAST 123.85 291.675 WEST	GRISSOM TOWER ★ 133.7 290.45	GND CON 128.425 275.8	CLNC DEL 128.425 275.8
-----------------------------	---	--	---------------------------------	----------------------------------



ELEV 811	TDZE 811
FAF to MAP 5.4 NM	
Knots	60 90 120 150 180
Min:Sec	5:24 3:36 2:42 2:10 1:48

CATEGORY	A	B	C	D	E
S-5 *	1180/24 369 (400-1/2)		1180/40 369 (400-3/4)		
CIRCLING	1340-1 529 (600-1)		1400-1 1/2 589 (600-1 1/2)	1400-2 589 (600-2)	1440-2 1/4 629 (700-2 1/4)

PERU, INDIANA

40°39'N-86°09'W

GRISSOM ARB (KGUS)

Amtd 8 06DEC18

TACAN or VOR RWY 5

EC-2, 02 DEC 2021 to 30 DEC 2021

EC-2, 02 DEC 2021 to 30 DEC 2021