

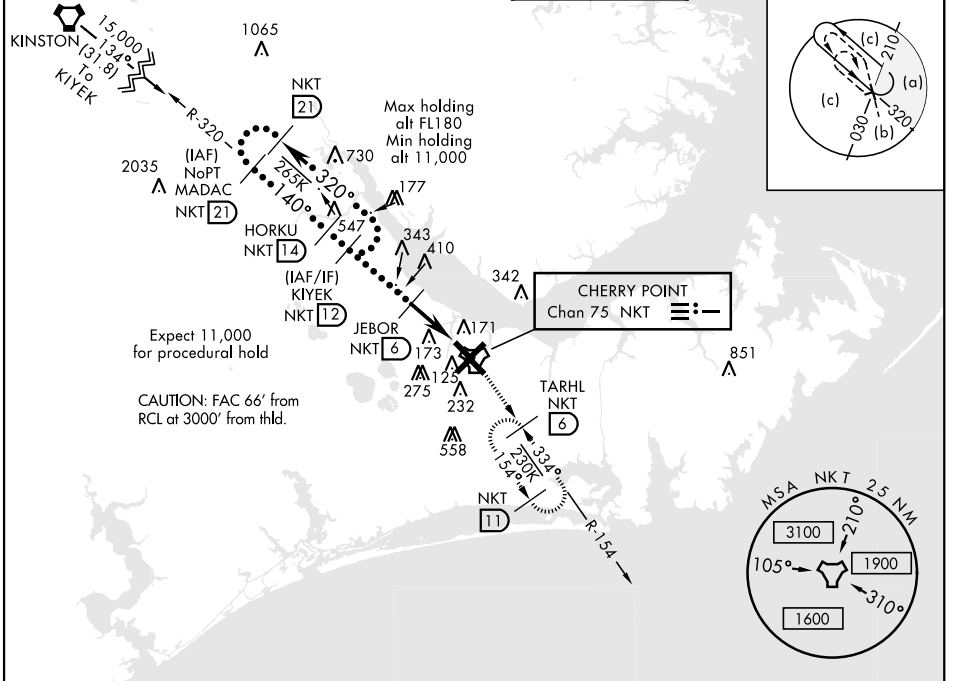
CHERRY POINT, NORTH CAROLINA

HI-TACAN Z RWY 14L

TACAN NKT Chan 75	APCH CRS 140°	Rwy ldg TDZE 8979 26 29	JAL-471 [USN] CHERRY POINT MCAS (CUNNINGHAM FLD) (KNKT)
----------------------	------------------	----------------------------------	---

MISSED APPROACH: Climb to 1600 to NKT TACAN then intercept NKT R-154 to TARHL and hold.

ATIS 127.475 244.875	CHERRY POINT APP CON 119.75 360.775 (E) (abv 2600') 132.575 299.6 (E) (at/blw 2600') 119.35 377.175 (E) 124.1 268.7 (N)	CHERRY POINT TOWER 121.3 340.2	GND CON 128.625 239.025	CLNC DEL 125.95 316.125	ASR/PAR
----------------------------	--	-----------------------------------	-------------------------------	-------------------------------	---------



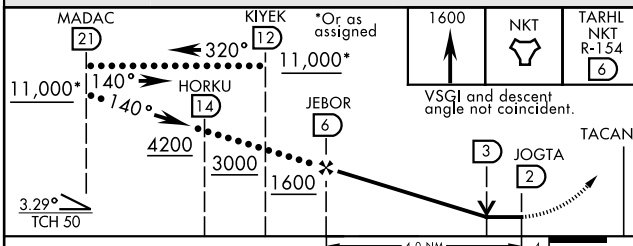
SE-2, 02 DEC 2021 to 30 DEC 2021

SE-2, 02 DEC 2021 to 30 DEC 2021

Expect 11,000 for procedural hold

CAUTION: FAC 66' from RCL at 3000' from thld.

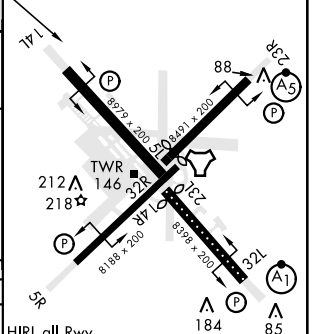
EMERG SAFE ALT 100 NM 4100



CATEGORY	C	D	E
S-14L	500-1 $\frac{3}{8}$	474	(500-1 $\frac{3}{8}$)
CIRCLING	600-1 $\frac{1}{2}$ 571 (600-1 $\frac{1}{2}$)	600-2 571 (600-2)	700-2 $\frac{1}{2}$ 671 (700-2 $\frac{1}{2}$)

ELEV 29	TDZE 26
---------	---------

140° to TACAN Rwy 32R, 23L, 14R, 5L marked in center mat area.



HIRL all Rwy
REIL Rwy 5L and 14R
Rwy 5L-23R ldg 7552',
14R-32L ldg 7351'

CHERRY POINT, NORTH CAROLINA 34° 54' N-76° 53' W CHERRY POINT MCAS (CUNNINGHAM FLD) (KNKT)

Amdt 7 05NOV20

HI-TACAN Z RWY 14L