

# RNAV (GPS) RWY 14L

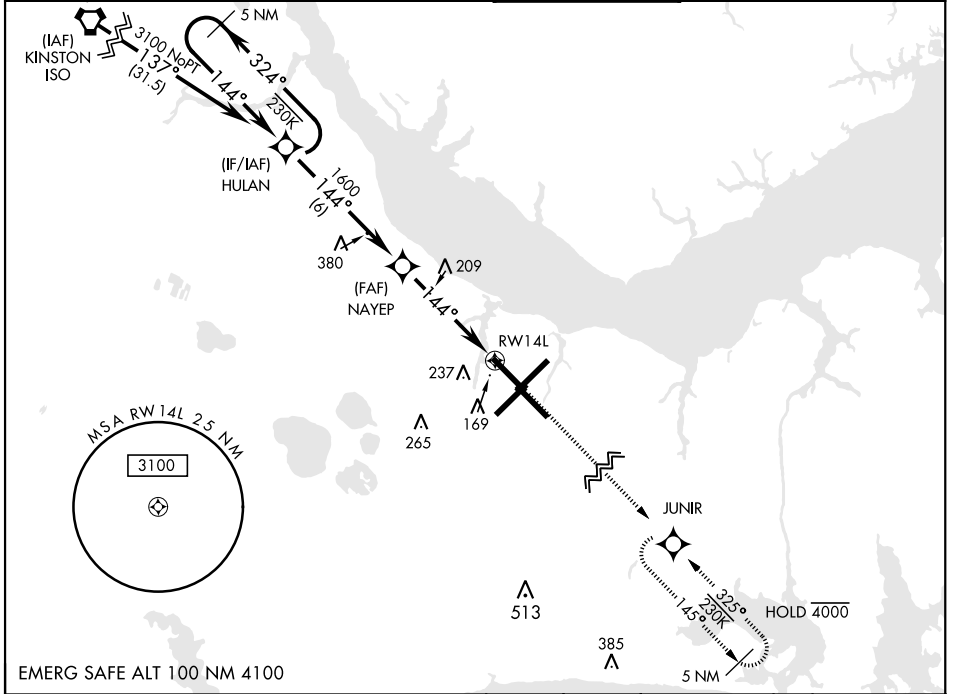
WAAS Chan <b>41117</b> <b>W14A</b>	APCH CRS <b>144°</b>	Rwy Idg TDZE Arprt Elev <b>8979</b> <b>26</b> <b>29</b>
--	-------------------------	--

AL-471 [USN] CHERRY POINT MCAS (CUNNINGHAM FLD) (KNKT)

RNP APCH  
 ▼ For uncompensated Baro-VNAV systems, LNAV/VNAV NA below -15°C (5°F) or above 54°C (129°F).

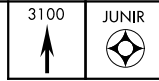
MISSED APPROACH: Climb to 3100 direct JUNIR and hold.

ATIS <b>127.475</b> <b>244.875</b>	<b>119.75</b> (E) <b>360.775</b> (abv 2600') <b>132.575</b> (E) <b>299.6</b> (at/blw 2600') <b>119.35</b> (W) <b>377.175</b> (N) <b>124.1</b> <b>268.7</b>	TOWER <b>121.3</b> <b>340.2</b>	GND CON <b>128.625</b> <b>239.025</b>	CLNC DEL <b>125.95</b> <b>316.125</b>	ASR/PAR
--	--	------------------------------------	---	---	---------

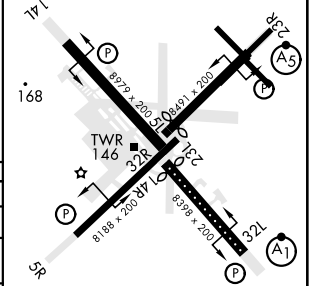
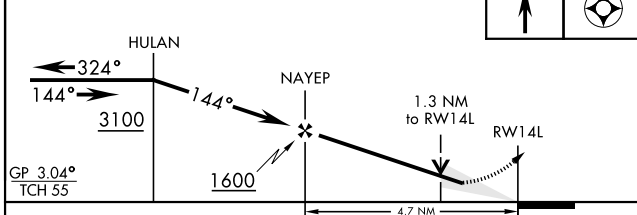


EMERG SAFE ALT 100 NM 4100

VGSI and RNAV glidepath not coincident (VGSI Angle 3.00/TCH 71).



ELEV 29	TDZE 26
RWY 32R, 23L, 14R, 5L marked in center mat area.	



CATEGORY	A	B	C	D
LPV DA	226- <sup>3</sup> / <sub>4</sub>		200	(200- <sup>3</sup> / <sub>4</sub> )
LNAV/VNAV DA	302- <sup>7</sup> / <sub>8</sub> 276 (300- <sup>7</sup> / <sub>8</sub> )	313- <sup>7</sup> / <sub>8</sub> 287 (300- <sup>7</sup> / <sub>8</sub> )	321- <sup>7</sup> / <sub>8</sub> 295 (300- <sup>7</sup> / <sub>8</sub> )	332- <sup>7</sup> / <sub>8</sub> 306 (400- <sup>7</sup> / <sub>8</sub> )
LNAV MDA	500-1	474 (500-1)	500-1 <sup>3</sup> / <sub>8</sub>	474 (500-1 <sup>3</sup> / <sub>8</sub> )
CIRCLING	580-1	551 (600-1)	600-1 <sup>1</sup> / <sub>2</sub> 571 (600-1 <sup>1</sup> / <sub>2</sub> )	600-2 571 (600-2)

HIRL all rwys  
 REIL Rwy 5L, 14R  
 Rwy 5L-23R Idg 7552'  
 Rwy 14R-32L Idg 7551'

# RNAV (GPS) RWY 14L

SE-2, 02 DEC 2021 to 30 DEC 2021

SE-2, 02 DEC 2021 to 30 DEC 2021