

RNAV (GPS) RWY 32L

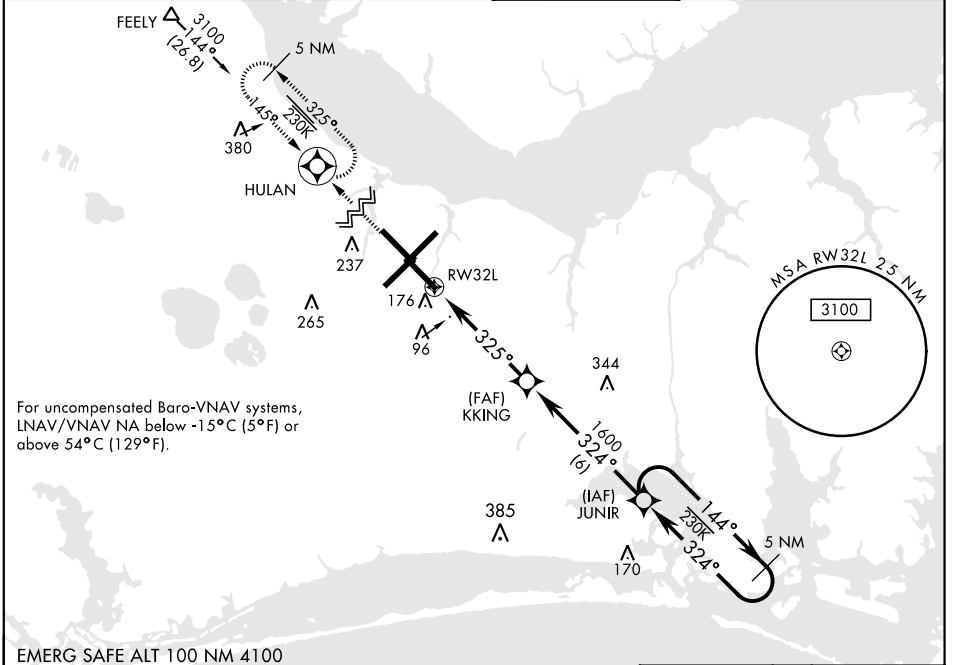
WAAS Chan 54304 W32A	APCH CRS 325°	Rwy ldg TDZE 26 Arprt Elev 29	7551
--	-------------------------	---	-------------

AL-471 [USN] CHERRY POINT MCAS (CUNNINGHAM FLD) (KNKT)

RNP APCH
 ▼ *When ALS inop, increase vis to 3/4 mile.
 **When ALS inop, increase vis to 1 1/8 mile.
 ***When ALS inop, increase CAT AB vis to 1 mile,
 CAT CD vis to 1 3/8 miles.

ALSF-1
 MISSED APPROACH: Climb to 3100 direct HULAN and hold.

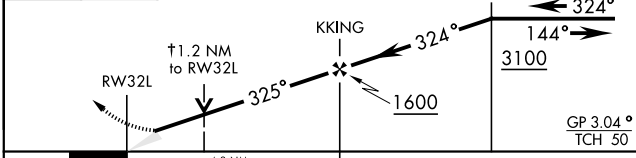
ATIS 127.475 244.875	CHERRY POINT APP CON (E) 119.75 360.775 (abv 2600') (E) 132.575 299.6 (at/blw 2600') (W) 119.35 377.175 (N) 124.1 268.7	CHERRY POINT TOWER 121.3 340.2	GND CON 128.625 239.025	CLNC DEL 125.95 316.125	ASR/ PAR
--	--	---	---	---	-------------



For uncompensated Baro-VNAV systems, LNAV/VNAV NA below -15°C (5°F) or above 54°C (129°F).

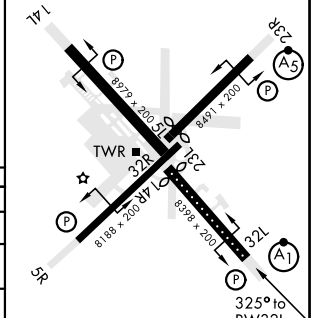
EMERG SAFE ALT 100 NM 4100

3100 HULAN VGSI and RNAV glidepath no coincident.
 ↑ LNAV only



ELEV 29	D	TDZE 26
----------------	----------	----------------

Rwy 32R, 23L, 14R, 5L marked in center mat area.



CATEGORY	A	B	C	D
LPV DA*		226-1/2	200	(200-1/2)
LNAV/ VNAV DA**		415-5/8	389	(400-3/8)
LNAV MDA***	480-1/2	454 (500-1/2)	480-7/8	454 (500-7/8)
C CIRCLING	580-1	551 (600-1)	600-1 1/2	600-2
			571 (600-1 1/2)	571 (600-2)

HIRL all Rwy
 REIL Rwy 5L and 14R
 Rwy 5L-23R 7552', 14R-32L ldg 7551'

RNAV (GPS) RWY 32L

SE-2, 02 DEC 2021 to 30 DEC 2021

SE-2, 02 DEC 2021 to 30 DEC 2021