

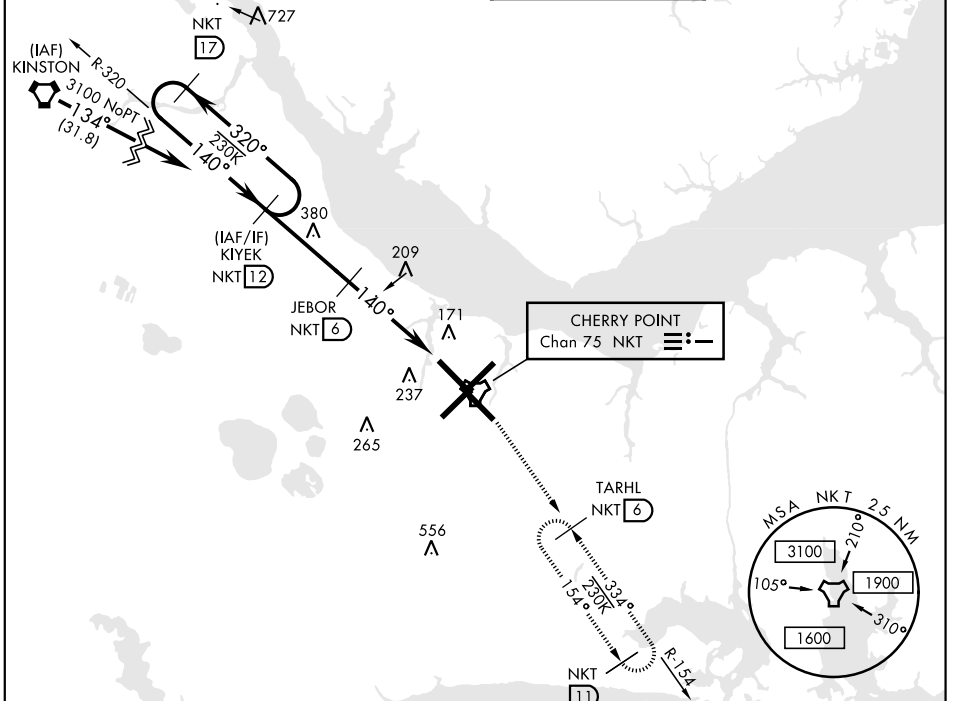
TACAN RWY 14L

TACAN NKT Chan 75	APCH CRS 140°	Rwy ldg TDZE 8979 26 29
--------------------------	----------------------	--------------------------------------

AL-471 [USN] CHERRY POINT MCAS (CUNNINGHAM FLD) (KNKT)

MISSED APPROACH: Climb to 1600 direct NKT TACAN, then direct TARHL and hold.

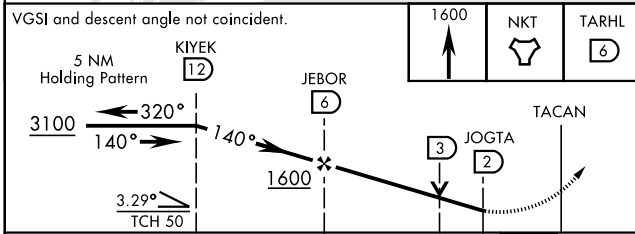
ATIS 127.475 244.875	CHERRY POINT APP CON (E) 119.75 360.775 (abv 2600') (E) 132.575 299.6 (at/blw 2600') (W) 119.35 377.175 (N) 124.1 268.7	CHERRY POINT TOWER 121.3 340.2	GND CON 128.625 239.025	CLNC DEL 125.95 316.125	ASR/PAR
--	---	--	-----------------------------------	-----------------------------------	---------



SE-2, 02 DEC 2021 to 30 DEC 2021

SE-2, 02 DEC 2021 to 30 DEC 2021

EMERG SAFE ALT 100 NM 4100



CATEGORY	A	B	C	D
S-14L	500-1 474 (500-1)		500-1½ 474 (500-1½)	
CIRCLING	580-1	551 (600-1)	600-1½ 571 (600-1½)	600-2 571 (600-2)

ELEV	29	TDZE	26
------	----	------	----

140° to TACAN Rwy 32R, 23L, 14R, 5L marked in center mat area.

HIRL all Rwy REIL Rwy 5L and 14R Rwy 5L-23R ldg 7552', 14R-32L ldg 7551'

TACAN RWY 14L