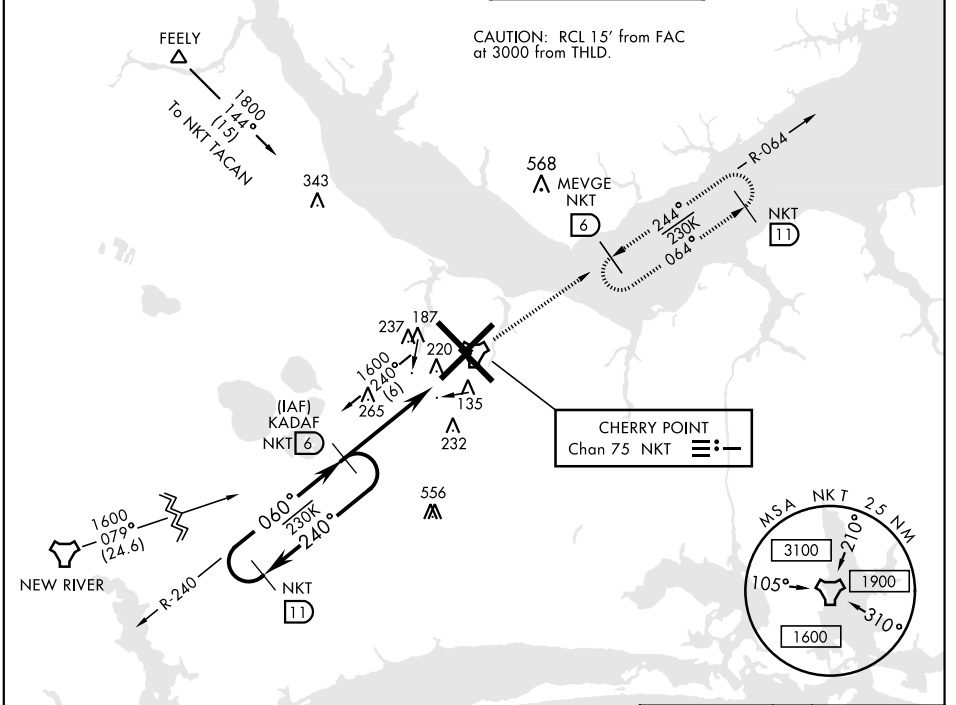


TACAN RWY 5R

TACAN NKT Chan 75	APCH CRS 060°	Rwy ldg TDZE 27 Arprt Elev 29	AL-471 [USN] CHERRY POINT MCAS (CUNNINGHAM FLD) (KNKT)
-----------------------------	-------------------------	---	--

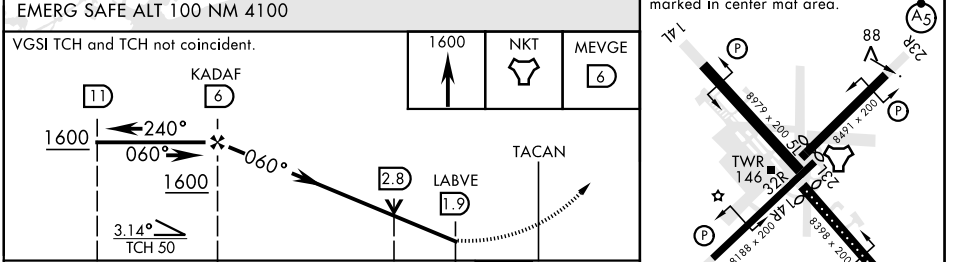
MISSED APPROACH: Climb to 1600 direct NKT TACAN, then direct MEVGE and hold.

ATIS 127.475 244.875	CHERRY POINT APP CON (E) 119.75 360.775 (abv 2600') (E) 132.575 299.6 (at/blw 2600') (W) 119.35 377.175 (N) 124.1 268.7	CHERRY POINT TOWER 121.3 340.2	GND CON 128.625 239.025	CLNC DEL 125.95 316.125	ASR/ PAR
--	--	---	---	---	-------------



ELEV 29	TDZE 27
----------------	----------------

Rwy 32R, 23L, 14R, 5L marked in center mat area.



CATEGORY	A	B	C	D
S-5R	500-1 473 (500-1)	500-1½ 473 (500-1½)		
CIRCLING	580-1 551 (600-1)	600-1½ 571 (600-1½)	600-2 571 (600-2)	

CHERRY POINT, NORTH CAROLINA 34° 54' N - 76° 53' W CHERRY POINT MCAS (CUNNINGHAM FLD) (KNKT)

TACAN RWY 5R

SE-2, 02 DEC 2021 to 30 DEC 2021

SE-2, 02 DEC 2021 to 30 DEC 2021

HIRL all Rwy
REIL Rwy 5L and 14R
Rwy 5L-23R ldg 7552',
14R-32L ldg 7551'