

| | | |
|---|------------------------|---|
| LOC/DME I-PSC 108.7 Chan 24 | APP CRS 211° | Rwy Idg 7110 TDZE 404 Apt Elev 410 |
|---|------------------------|---|

ILS or LOC RWY 21R


TRI-CITIES (PSC)

DME required for LOC only.

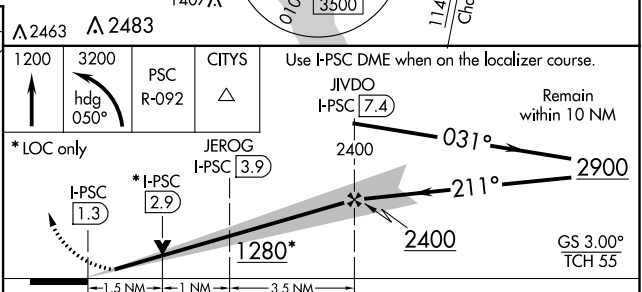
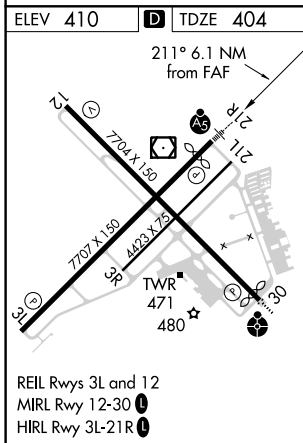
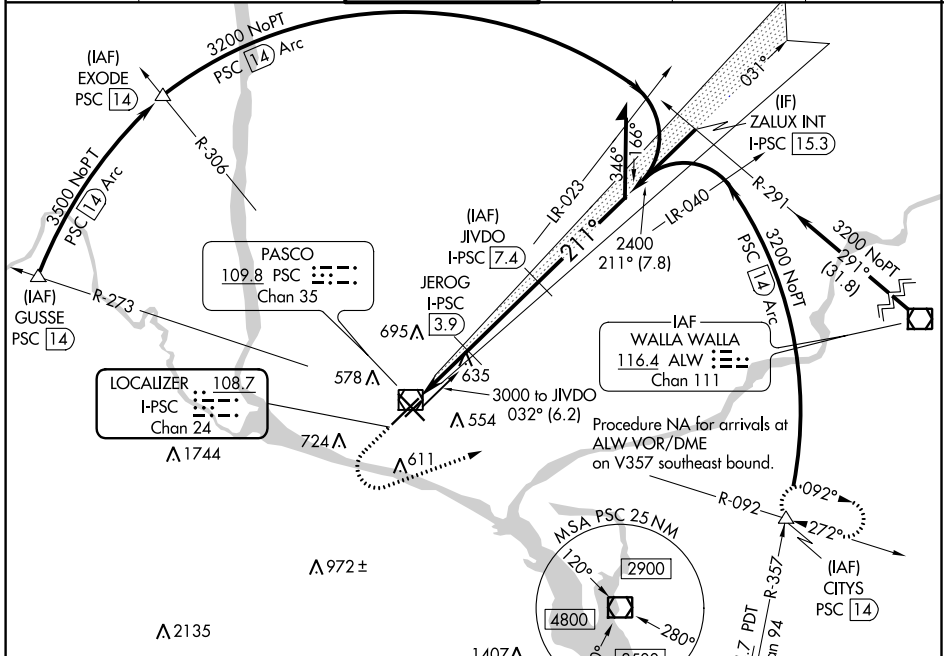
V VDP NA when using Hermiston altimeter setting. When local altimeter setting not received, use Hermiston altimeter setting and increase all DA 95 feet and all MDA 100 feet; increase S-LOC 21R Cat C and D visibility 3/8 mile and Circling Cat C and D visibility 1/4 mile.

A For inop ALS when using Hermiston altimeter setting, increase S-ILS 21R all Cats visibility to RVR 4500, increase S-LOC 21R Cats C and D visibility to 1 3/4 SM.

#RVR 1800 authorized with use of FD or AP or HUD to DA (NA when using Hermiston altimeter setting).

MALSR
 MISSED APPROACH:
 Climb to 1200 then climbing left turn to 3200 on heading 050° and PSC VOR/DME R-092 to CITYS INT/PSC VOR/DME 14 DME and hold.

| | | | | | |
|-----------------------|--|---|-------------------------|--------------------------|-------------------------|
| ATIS 125.65 | CHINOOK APP CON * 128.75 377.2 | TRI-CITIES TOWER * 135.3 (CTAF) 323.3 | GND CON 121.8 | CLNC DEL 120.0 | UNICOM 122.95 |
|-----------------------|--|---|-------------------------|--------------------------|-------------------------|



| CATEGORY | A | B | C | D |
|-------------------|-----------------------|---------------|-------------------------------|-------------------------------|
| S-ILS 21R | #604/24 200 (200-1/2) | | | |
| S-LOC 21R | 940/24 | 536 (600-1/2) | 940/55 | 536 (600-1) |
| C CIRCLING | 940-1 | 530 (600-1) | 1040-1 3/4 630 (700-1 3/4) | 1100-2 1/4 690 (700-2 1/4) |

NW-1, 02 DEC 2021 to 30 DEC 2021

NW-1, 02 DEC 2021 to 30 DEC 2021