

APP CRS	Rwy Idg	7504
121°	TDZE	402
	Apt Elev	410

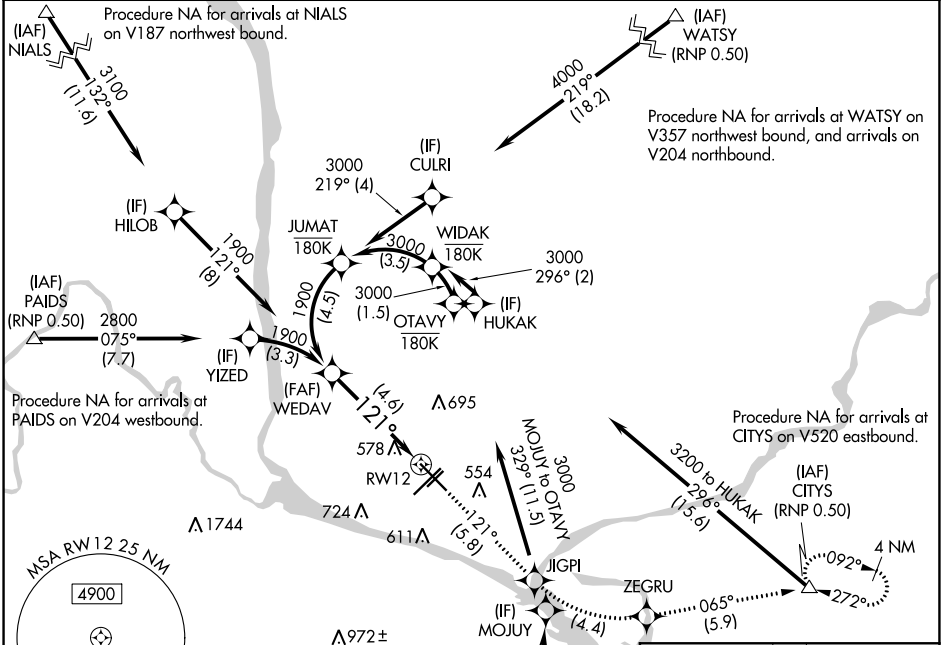
RNAV (RNP) Z RWY 12

TRI-CITIES (PSC)

▼ For uncompensated Baro-VNAV systems, procedure NA below -14°C (7°F) or above 54°C (130°F). GPS required. RF required.

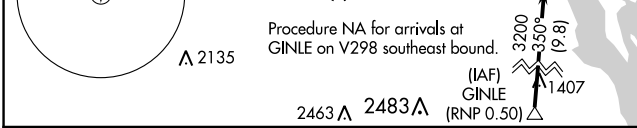
MISSED APPROACH: Climb to 3200 on track 121° to JIGPI, left turn to ZEGRU, and on track 065° to CITYS and hold.

ATIS	CHINOOK APP CON*	TRI-CITIES TOWER*	GND CON	CLNC DEL	UNICOM
125.65	128.75 377.2	135.3 (CTAF) 0 323.3	121.8	120.0	122.95

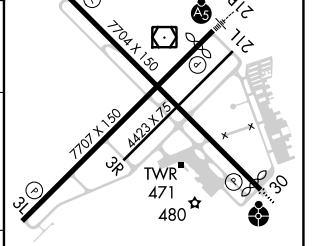
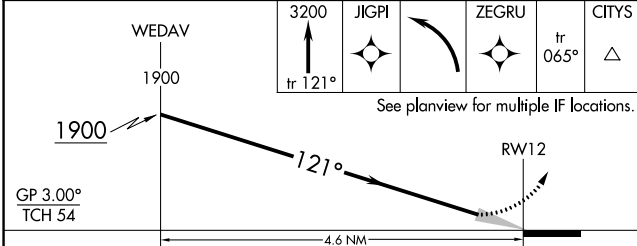


NW-1, 02 DEC 2021 to 30 DEC 2021

NW-1, 02 DEC 2021 to 30 DEC 2021



ELEV 410	TDZE 402
----------	----------



CATEGORY	A	B	C	D
RNP 0.11 DA		769-1¼	367 (400-1¼)	
RNP 0.30 DA		883-1½	481 (500-1½)	

AUTHORIZATION REQUIRED

REIL Rwy 3L and 12
 MIRL Rwy 12-30
 HIRL Rwy 3L-21R