

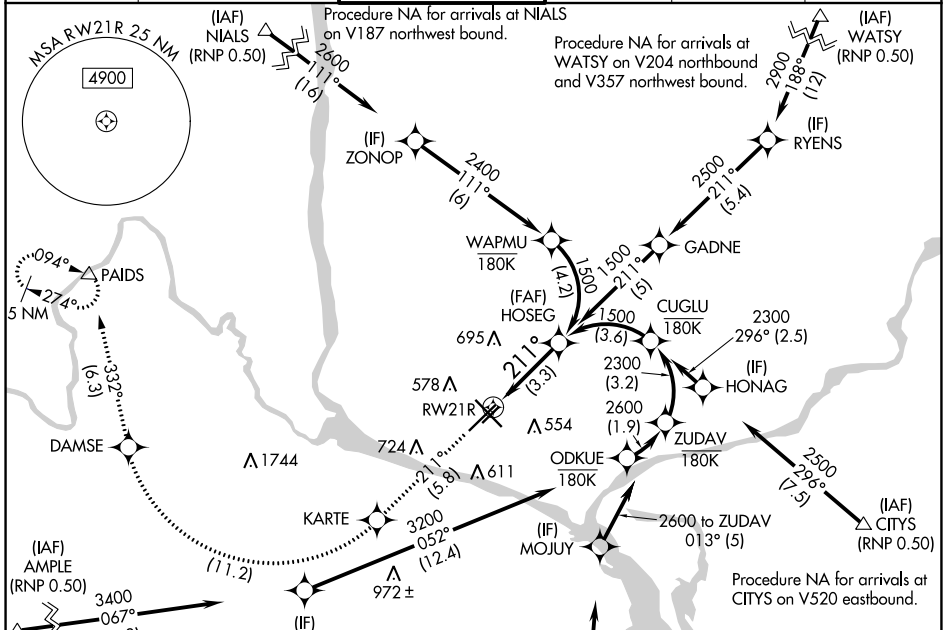
APP CRS	Rwy Idg	7110
211°	TDZE	404
	Apt Elev	410

RNAV (RNP) Z RWY 21R

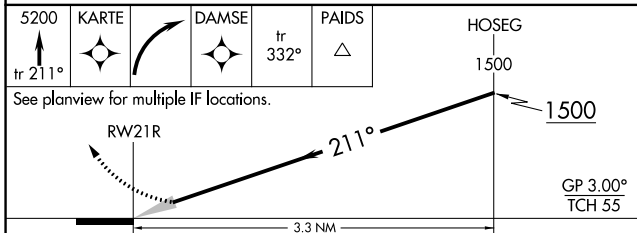
TRI-CITIES (PSC)

<p>▽ For uncompensated Baro-VNAV systems, procedure NA below -14°C (7°F) or above 54°C (130°F). GPS required. RF required. For inoperative MALSR, increase RNP 0.11 all Cats visibility to RVR 5700 and RNP 0.30 all Cats visibility to 1 3/8 mile.</p>	<p>MALSR </p>	<p>MISSED APPROACH: Climb to 5200 on track 211° to KARTE, right turn to DAMSE, and on track 332° to PAIDS and hold.</p>
--	---------------	---

ATIS 125.65	CHINOOK APP CON* 128.75 377.2	TRI-CITIES TOWER* 135.3 (CTAF) 0 323.3	GND CON 121.8	CLNC DEL 120.0	UNICOM 122.95
-----------------------	---	--	-------------------------	--------------------------	-------------------------

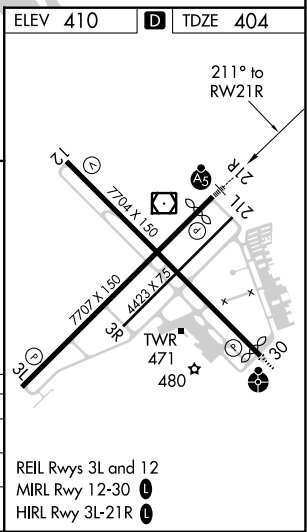


ELEV 410	D TDZE 404
<p>Procedure NA for arrivals at AMPL on V4 westbound and V520 southwest bound.</p>	<p>Procedure NA for arrivals at GINLE on V298 southeast bound.</p>



CATEGORY	A	B	C	D
RNP 0.11 DA		754/33	350 (400-3/4)	
RNP 0.30 DA		832/48	428 (500-1)	

AUTHORIZATION REQUIRED



NW-1, 02 DEC 2021 to 30 DEC 2021

NW-1, 02 DEC 2021 to 30 DEC 2021