

APP CRS 031°	Rwy Idg TDZE Apt Elev	7707 410 410
------------------------	-----------------------------	---

RNAV (RNP) Z RWY 3L

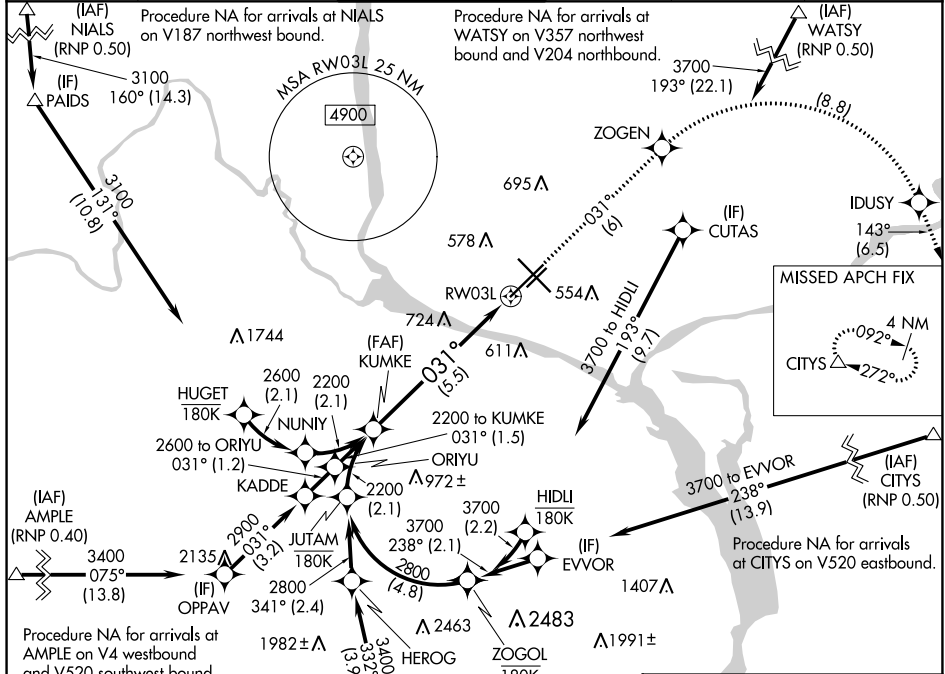
TRI-CITIES (PSC)

RNP AR APCH. RF required.

▼ For uncompensated Baro-VNAV systems, procedure NA below -14°C or above 54°C.

MISSED APPROACH: Climb to 3200 on track 031° to ZOGEN, right turn to IDUSY, and on track 143° to CITYS and hold.

ATIS 125.65	CHINOOK APP CON* 128.75 377.2	TRI-CITIES TOWER* 135.3 (CTAF) 0 323.3	GND CON 121.8	CLNC DEL 120.0	UNICOM 122.95
-----------------------	---	--	-------------------------	--------------------------	-------------------------



See planview for multiple IF locations.

KUMKE 2200 tr 031°

ZOGEN 3200

IDUSY 471

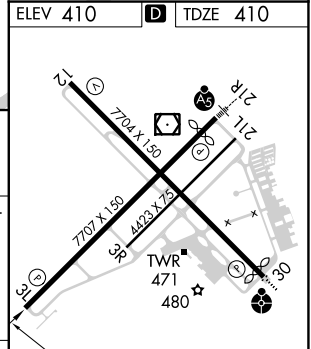
CITYS tr 143°

VGSI and RNAV glidepath not coincident. (VGSI Angle 3.00/TCH 49).

GP 3.00° TCH 45

2200 031° RWY 3L

5.5 NM



CATEGORY	A	B	C	D
RNP 0.11 DA		729-1	319 (400-1)	
RNP 0.30 DA		849-1½	439 (500-1½)	

AUTHORIZATION REQUIRED

REIL Rwy 3L and 12
MIRL Rwy 12-30 0
HIRL Rwy 3L-21R 0

NW-1, 02 DEC 2021 to 30 DEC 2021

NW-1, 02 DEC 2021 to 30 DEC 2021