

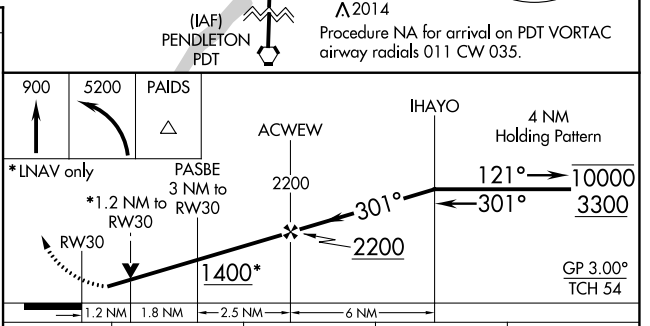
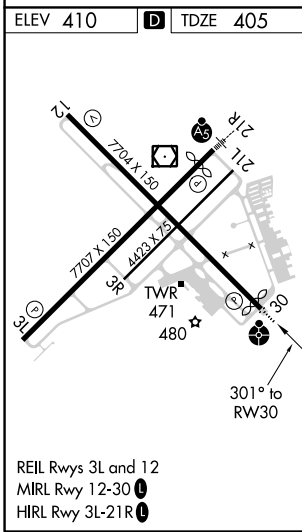
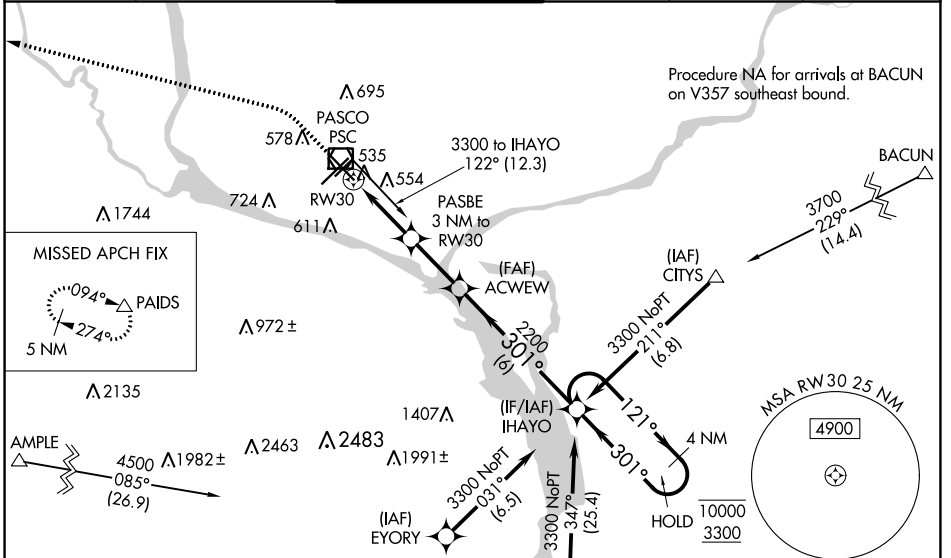
WAAS CH <b>86605</b> <b>W30A</b>	APP CRS <b>301°</b>	Rwy Idg TDZE Apt Elev	<b>7504</b> <b>405</b> <b>410</b>
--	------------------------	-----------------------------	---

# RNAV (GPS) Y RWY 30

TRI-CITIES (PSC)

RNP APCH.	<p>Baro-VNAV and VDP NA when using Hermiston altimeter setting. Rwy 30 helicopter visibility reduction below <math>\frac{3}{4}</math> SM NA. For uncompensated Baro-VNAV systems, LNAV/VNAV NA below <math>-14^{\circ}\text{C}</math> or above <math>54^{\circ}\text{C}</math>. When local altimeter setting not received, use Hermiston altimeter setting; increase all DA 95 feet and all MDA 100 feet. Increase LPV and LNAV/VNAV all Cats visibilities <math>\frac{1}{4}</math> mile; increase LNAV and Circling Cats C and D visibility <math>\frac{1}{4}</math> mile.</p>	<p>ODALS</p>	<p>MISSED APPROACH: Climb to 900 then climbing left turn to 5200 direct PAIDS and hold, continue climb-in-hold to 5200.</p>
-----------	---	--------------	---

ATIS <b>125.65</b>	CHINOOK APP CON* <b>128.75 377.2</b>	TRI-CITIES TOWER* <b>135.3 (CTAF) 0 323.3</b>	GND CON <b>121.8</b>	CLNC DEL <b>120.0</b>	UNICOM <b>122.95</b>
-----------------------	---	--	-------------------------	--------------------------	-------------------------



CATEGORY	A	B	C	D
LPV DA		655- $\frac{3}{4}$	250 (300- $\frac{3}{4}$ )	
LNAV/VNAV DA		749-1	344 (400-1)	
LNAV MDA	840- $\frac{3}{4}$	435 (500- $\frac{3}{4}$ )	840-1 $\frac{1}{8}$	435 (500-1 $\frac{1}{8}$ )
<b>C</b> CIRCLING	880-1 470 (500-1)	940-1 530 (600-1)	1040-1 $\frac{3}{4}$ 630 (700-1 $\frac{3}{4}$ )	1100-2 $\frac{1}{4}$ 690 (700-2 $\frac{1}{4}$ )

NW-1, 02 DEC 2021 to 30 DEC 2021

NW-1, 02 DEC 2021 to 30 DEC 2021