

WAAS CH <b>40206</b> <b>W03A</b>	APP CRS <b>031°</b>	Rwy Idg TDZE Apt Elev	<b>7707</b> <b>410</b> <b>410</b>
--	------------------------	-----------------------------	---

# RNAV (GPS) Y RWY 3L

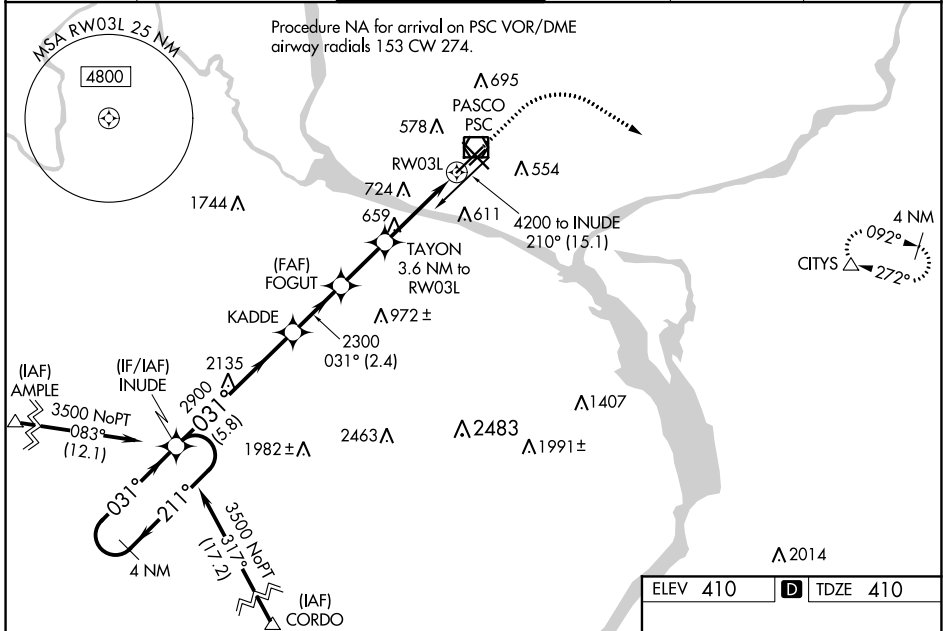
TRI-CITIES (PSC)

RNP APCH.

**▼** Baro-VNAV NA when using Hermiston altimeter setting. For uncompensated Baro-VNAV systems, LNAV/VNAV NA below -14°C or above 54°C. VDP NA with Hermiston altimeter setting.  
**▲** When local altimeter setting not received, use Hermiston altimeter setting: increase all DA 95 feet and all MDA 100 feet. Increase LPV all Cats visibility ¼ mile, LNAV/VNAV all Cats visibilities ⅓ mile: increase LNAV Cats C and D visibility ⅓ mile. Circling Cat C and D visibility ¼ mile.

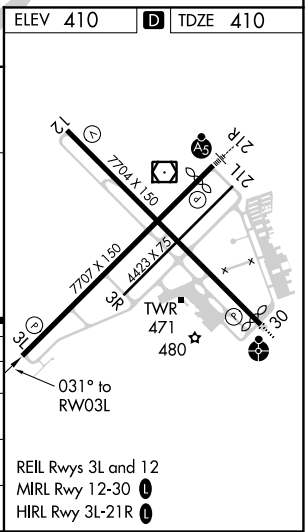
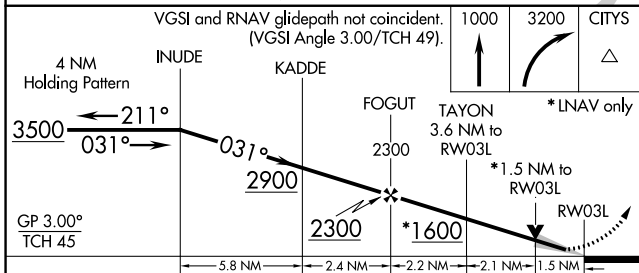
**MISSED APPROACH:**  
 Climb to 1000 then climbing right turn to 3200 direct CITYS and hold.

ATIS <b>125.65</b>	CHINOOK APP CON* <b>128.75 377.2</b>	TRI-CITIES TOWER* <b>135.3 (CTAF) 0 323.3</b>	GND CON <b>121.8</b>	CLNC DEL <b>120.0</b>	UNICOM <b>122.95</b>
-----------------------	---	--	-------------------------	--------------------------	-------------------------



NW-1, 02 DEC 2021 to 30 DEC 2021

NW-1, 02 DEC 2021 to 30 DEC 2021



CATEGORY	A				B		C		D	
LPV DA	610-¾				200 (200-¾)					
LNAV/VNAV DA	708-1				298 (300-1)					
LNAV MDA	920-1		510 (600-1)		920-1¾		510 (600-1¾)			
<b>C</b> CIRCLING	920-1		940-1		1040-1¾		1100-2¼			
	510 (600-1)		530 (600-1)		630 (700-1¾)		690 (700-2¼)			