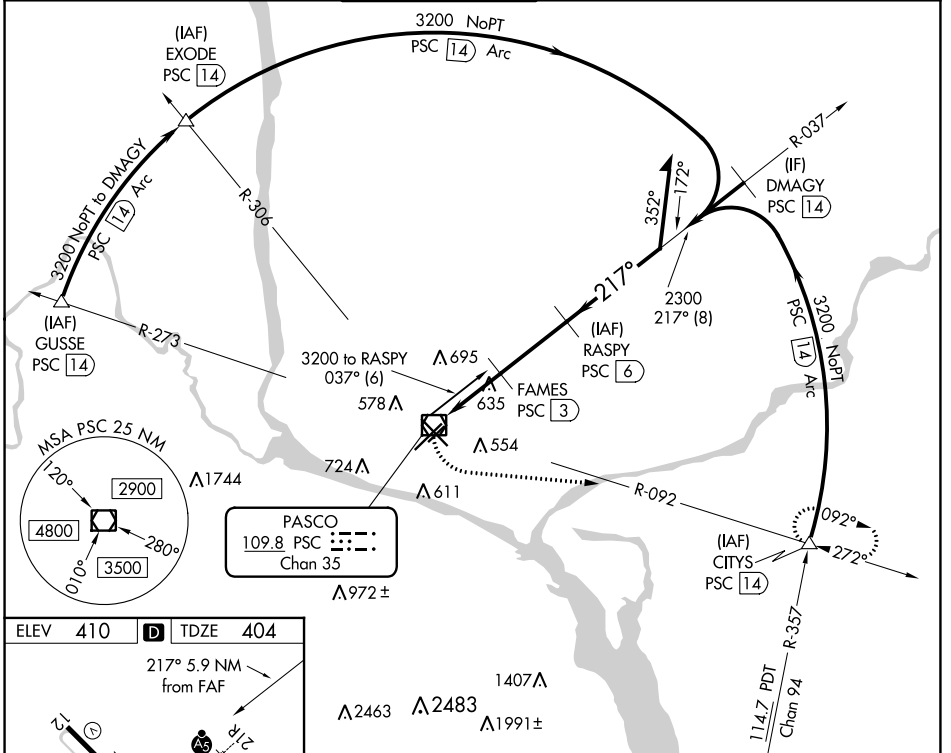


VOR/DME PSC 109.8 Chan 35	APP CRS 217°	Rwy Idg 7110 TDZE 404 Apt Elev 410
---	------------------------	---

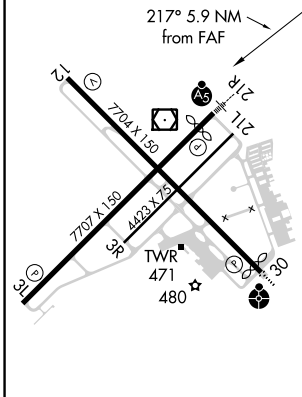
VOR RWY 21R

TRI-CITIES (PSC)

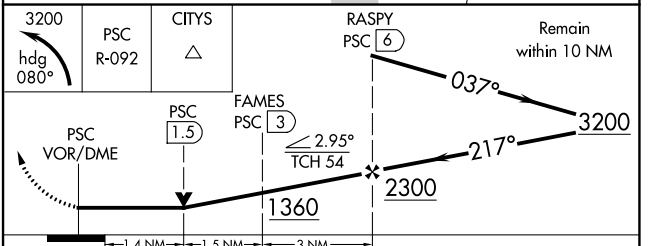
DME required.		MALSRL	MISSED APPROACH: Climbing left turn to 3200 on heading 080° and PSC VOR/DME R-092 PSC VOR/DME to CITYS INT/ PSC 14 DME and hold.		
ATIS 125.65	CHINOOK APP CON* 128.75 377.2	TRI-CITIES TOWER* 135.3 (CTAF) 323.3	GND CON 121.8	CLNC DEL 120.0	UNICOM 122.95



ELEV 410	D	TDZE 404
----------	----------	----------



REIL Rwy 3L and 12
MIRL Rwy 12-30
HIRL Rwy 3L-21R



CATEGORY	A	B	C	D
S-21R	940/24	536 (600-½)	940/55	536 (600-1)
C CIRCLING	940-1	530 (600-1)	1040-1¾ 630 (700-1¾)	1100-2¼ 690 (700-2¼)

NW-1, 02 DEC 2021 to 30 DEC 2021

NW-1, 02 DEC 2021 to 30 DEC 2021