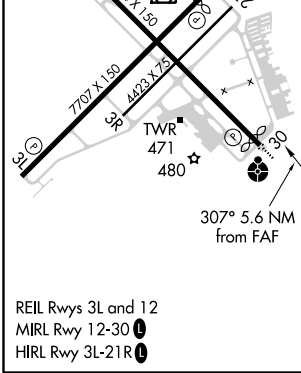
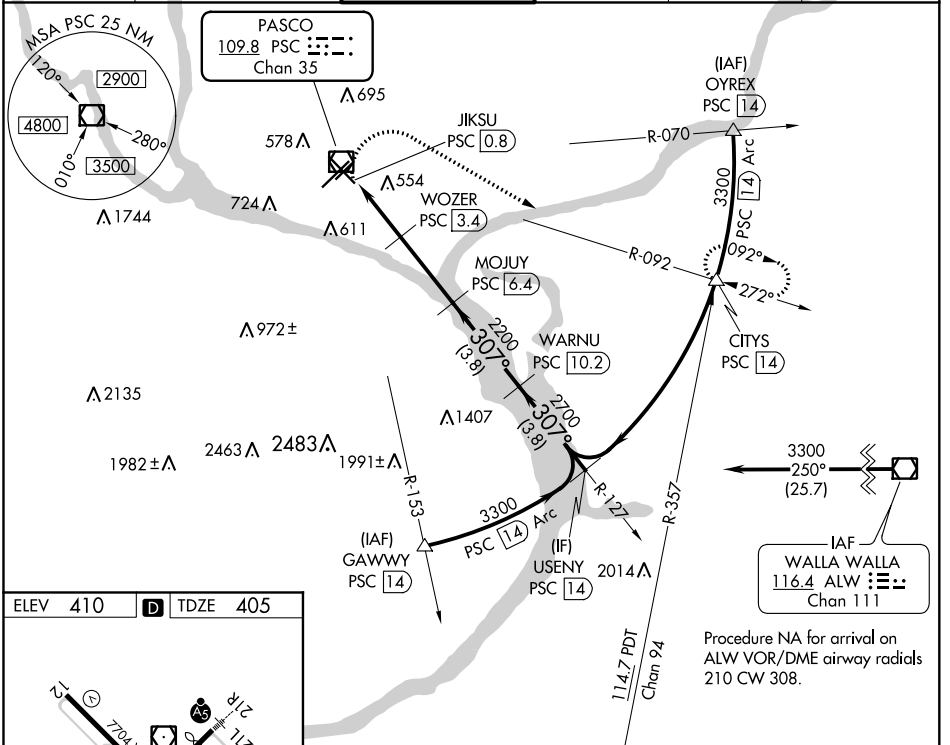


VOR/DME PSC 109.8 Chan 35	APP CRS 307°	Rwy Idg 7504 TDZE 405 Apt Elev 410
---	------------------------	---

VOR RWY 30

TRI-CITIES (PSC)

DME required.		ODALS 	MISSED APPROACH: Climbing right turn to 3200 on heading 105° and PSC R-092 to CITYS/PSC 14 DME and hold.		
▼ Rwy 30 helicopter visibility reduction below 3/4 SM not authorized. VDP NA when using Hermiston altimeter setting. When local altimeter setting not received, use Hermiston altimeter setting and increase all MDA 100 feet, increase S-30 visibility Cat C/D 3/8 SM and Circling Cat C/D visibility 1/4 SM. For inoperative ALS, increase S-30 Cat C/D visibility to 1 1/8 SM.					
ATIS 125.65	CHINOOK APP CON * 128.75 377.2	TRI-CITIES TOWER * 135.3 (CTAF) 323.3	GND CON 121.8	CLNC DEL 120.0	UNICOM 122.95



3200	CITYS PSC R-092	WOZER PSC 3.4	MOJUJ PSC 6.4	WARNU PSC 10.2	USENY PSC 14
hdg 105°					
1260	1.1 NM	1.5 NM	3 NM	3.8 NM	3.8 NM
307°					
2200					
2700					
3300					
11.7 PDT Chan 94					
1.1 NM	1.5 NM	3 NM	3.8 NM	3.8 NM	
CATEGORY	A	B	C	D	
S-30	820-3/4	415 (500-3/4)	820-1	415 (500-1)	
CIRCLING	880-1 470 (500-1)	940-1 530 (600-1)	1040-1 3/4 630 (700-1 3/4)	1100-2 1/4 690 (700-2 1/4)	

NW-1, 02 DEC 2021 to 30 DEC 2021

NW-1, 02 DEC 2021 to 30 DEC 2021