

WAAS CH <b>50300</b> <b>W12A</b>	APP CRS <b>122°</b>	Rwy Idg TDZE Apt Elev	<b>6001</b> <b>74</b> <b>79</b>
--	------------------------	-----------------------------	---------------------------------------

# RNAV (GPS) RWY 12

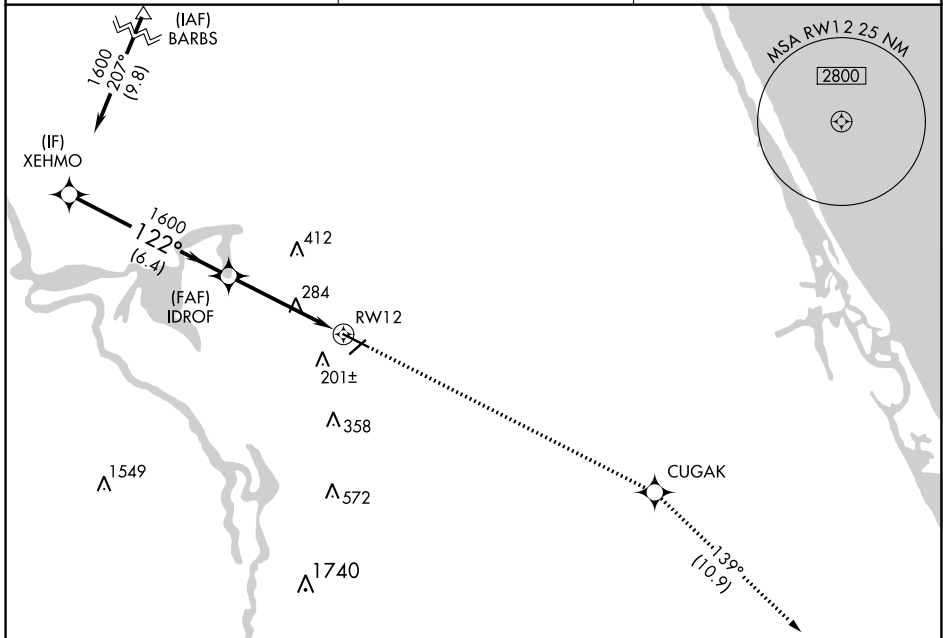
DELAND MUNI-SIDNEY H TAYLOR FIELD (DED)

RNP APCH.

**⚠** For uncompensated Baro-VNAV systems, LNAV/VNAV NA below -15°C (5°F) or above 54°C (130°F). Baro-VNAV and VDP NA when using Daytona Beach Infil altimeter setting. Rwy 12 helicopter visibility reduction below 3/4 SM NA. When local altimeter setting not received use Daytona Beach Infil altimeter setting increase all DA/MDA 40 feet, increase LNAV/VNAV visibility 1/4 SM all Cats.

**MISSED APPROACH:** Climb to 2000 direct CUGAK then on track 139° to OAKIE and hold.

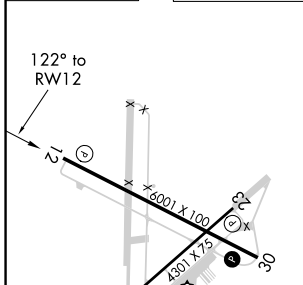
AWOS-3 <b>119.575</b>	DAYTONA APP CON <b>125.35 322.3</b>	UNICOM <b>123.075 (CTAF)</b> <b>📻</b>
--------------------------	--	--



SE-3, 02 DEC 2021 to 30 DEC 2021

SE-3, 02 DEC 2021 to 30 DEC 2021

ELEV <b>79</b>	TDZE <b>74</b>
----------------	----------------



MIRL Rwy 5-23 and 12-30 **📻**  
REIL Rwy 12 and 30 **📻**

VGSi and RNAV glidepath not coincident (VGSi Angle 3.00/TCH 51).		2000	CUGAK	tr 139°	OAKIE
XEHMO	IDROF	1600	*1.5 NM to RWY 12		*LNAV only.
1600	122°	1600			
GP 3.00°					
TCH 40	6.4 NM	3.1 NM	1.5 NM		
CATEGORY	A	B	C	D	
LPV DA		404-1 1/4	330 (400-1 1/4)		
LNAV/VNAV DA		528-1 1/2	454 (500-1 1/2)		
LNAV MDA	600-1	526 (600-1)	600-1 1/2	526 (600-1 1/2)	