

APP CRS	Rwy Idg	6001
302°	TDZE	72
	Apt Elev	79

RNAV (GPS) RWY 30

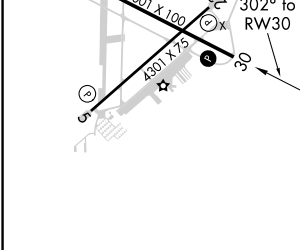
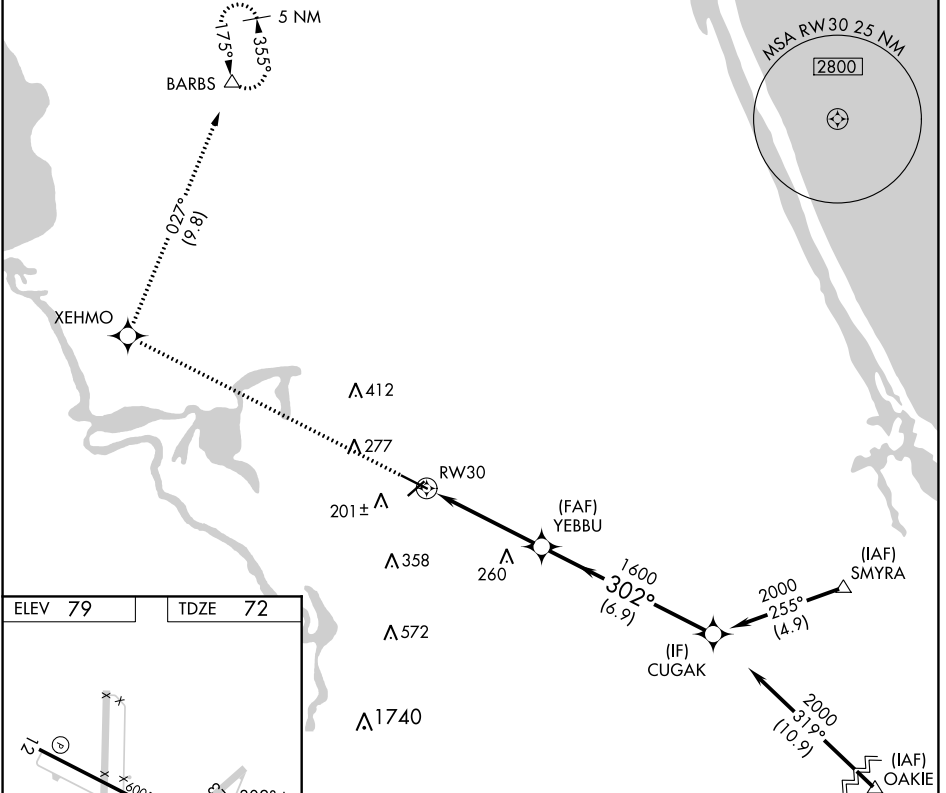
DELAND MUNI-SIDNEY H TAYLOR FIELD (DED)

RNP APCH.

⚠ Rwy 30 helicopter visibility reduction below 3/4 SM NA. VDP NA when using Daytona Beach Intl altimeter setting. When local altimeter setting not received, use Daytona Beach Intl altimeter setting and increase all MDAs 40 feet.

MISSED APPROACH: Climb to 3000 direct XEHMO and right turn on track 027° direct BARBS and hold.

AWOS-3 119.575	DAYTONA APP CON 125.35 322.3	UNICOM 123.075 (CTAF) 0
--------------------------	--	-----------------------------------



ELEV 79	TDZE 72		
3000	XEHMO	BARBS	VGSI and descent angles not coincident (VGSI Angle 3.00°/TCH 54).
↑	✧	△	
	Ir 027°		
			CUGAK
		YEBBU	2000
	1.2 NM to RWY 30	3.4 NM	6.9 NM
	1600	302°	
	≤ 3.00° TCH 40		

CATEGORY	A	B	C	D
LNAV MDA	500-1	428 (500-1)	500-1¼	428 (500-1¼)

SE-3, 02 DEC 2021 to 30 DEC 2021

SE-3, 02 DEC 2021 to 30 DEC 2021