

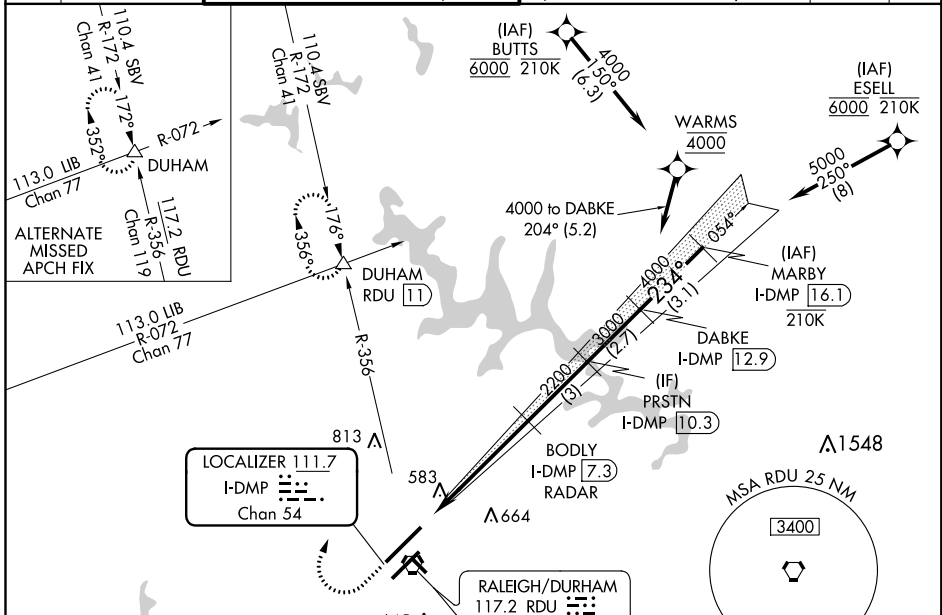
LOC/DME I-DMP 111.7 Chan 54	APP CRS 234°	Rwy Idg TDZE Apt Elev 10000 409 435
---	------------------------	---

ILS or LOC RWY 23R

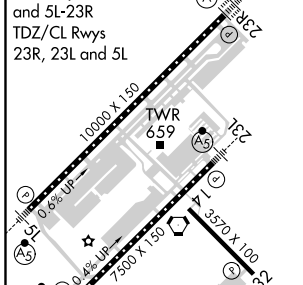
RALEIGH-DURHAM INTL (RDU)

RNAV 1-DME/DME/IRU or GPS or RADAR required for procedure entry. RADAR or DME required for LOC only.	ALSF-2 	MISSED APPROACH: Climb to 1000 then climbing right turn to 2200 on RDU VORTAC R-356 to DUHAM INT/RDU 11 DME and hold.
Simultaneous approach authorized. For inop ALS increase S-LOC 23R Cat C/D visibility to 1 1/2 SM.		

D-ATIS 123.8	RALEIGH APP CON 127.675 307.9	(EAST) RALEIGH TOWER (WEST) 127.45 257.8 119.3 257.8	(EAST) GND CON (WEST) 121.9 348.6 121.7 348.6	CLNC DEL 120.1	CPDLC
		Rwys 5R-23L and 14-32	Rwys 5R-23L and 14-32	Rwy 5L-23R	



ELEV 435	TDZE 409
REIL Rwy 32	234° 5.5 NM from FAF
MIRL Rwy 14-32	
HIRL Rwys 5R-23L and 5L-23R	
TDZ/CL Rwys 23R, 23L and 5L	



1000	2200	RDU R-356	DUHAM	VGSI and ILS glidepath not coincident (VGSI Angle 3.00/TCH 69).	MARBY I-DMP [16.1]
*LOC only.		BODY I-DMP [7.3] RADAR	PRSTN I-DMP [10.3]	DABKE I-DMP [12.9]	
I-DMP [1.8]	*I-DMP [3.4]	2200	3000	4000	5000
1.6 NM	3.9 NM	3 NM	2.7 NM	3.1 NM	
GS 3.00° TCH 55					

FAF to MAP 5.5 NM						
Knots	60	90	120	150	180	
Min:Sec	5:30	3:40	2:45	2:12	1:50	
CIRCLING	980-1	545 (600-1)	1020-1 1/2	585 (600-1 1/2)	1180-2 1/2	745 (800-2 1/2)

SE-2, 02 DEC 2021 to 30 DEC 2021

SE-2, 02 DEC 2021 to 30 DEC 2021