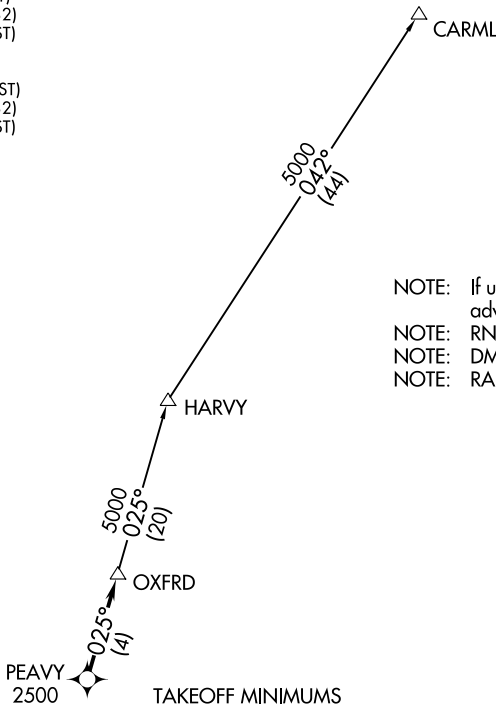


OXFRD FIVE DEPARTURE (RNAV)

D-ATIS
123.8
CLNC DEL
120.1
CPDLC
GND CON
121.9 348.6 (EAST)
(Rwys 5R-23L, 14-32)
121.7 348.6 (WEST)
(Rwy 5L-23R)
RALEIGH TOWER
127.45 257.8 (EAST)
(Rwys 5R-23L, 14-32)
119.3 257.8 (WEST)
(Rwy 5L-23R)
RALEIGH DEP CON
132.35 256.9

**TOP ALTITUDE:
(JETS) 6000
(PROPS) ASSIGNED BY ATC**



- NOTE: If unable to accept climb rate, advise ATC on initial contact.
- NOTE: RNAV 1.
- NOTE: DME/DME/IRU or GPS required.
- NOTE: RADAR required.

TAKEOFF MINIMUMS

- Rwys 5L/R: Standard.
- Rwy 14: Standard with minimum climb of 310' per NM to 1000.
- Rwy 23L: Standard with minimum climb of 250' per NM to 2300.
- Rwy 23R: Standard with minimum climb of 240' per NM to 2100.
- Rwy 32: 300-1.

DEPARTURE ROUTE DESCRIPTION

TAKEOFF RUNWAYS 5L/R, 14, 23L/R, 32: Climb on assigned heading for RADAR vectors to cross PEAVY at or above 2500, thence. . . .

. . . .on track 025° to OXFRD. Turbojets maintain 6000, propellers maintain altitude assigned by ATC. Expect clearance to filed altitude within ten minutes after departure.

CARML TRANSITION (OXFRD5.CARML)

NOTE: Chart not to scale.



SE-2, 02 DEC 2021 to 30 DEC 2021

SE-2, 02 DEC 2021 to 30 DEC 2021