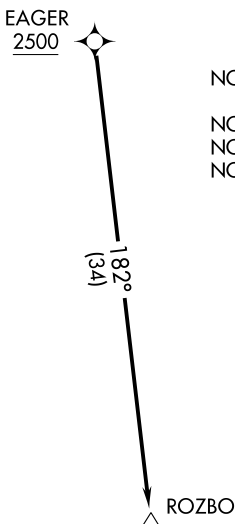


ROZBO FIVE DEPARTURE (RNAV)

**TOP ALTITUDE:
(JETS) 6000
(PROPS) ASSIGNED BY ATC**

D-ATIS
123.8
CLNC DEL
120.1
CPDLC
GND CON
121.9 348.6 (EAST)
(Rwys 5R-23L, 14-32)
121.7 348.6 (WEST)
(Rwy 5L-23R)
RALEIGH TOWER
127.45 257.8 (EAST)
(Rwys 5R-23L, 14-32)
119.3 257.8 (WEST)
(Rwy 5L-23R)
RALEIGH DEP CON
125.3 353.675



- NOTE: If unable to accept climb rate, advise ATC on initial contact.
- NOTE: RNAV 1.
- NOTE: DME/DME/IRU or GPS required.
- NOTE: RADAR required.

TAKEOFF MINIMUMS

Rwys 5L/R: Standard.
 Rwy 14: Standard with minimum climb of 310' per NM to 1000.
 Rwy 23L: Standard with minimum climb of 250' per NM to 2300.
 Rwy 23R: Standard with minimum climb of 240' per NM to 2100.
 Rwy 32: 300-1.

NOTE: Chart not to scale.



DEPARTURE ROUTE DESCRIPTION

TAKEOFF RUNWAYS 5L/R, 14, 23L/R, 32:

Climb on assigned heading for RADAR vectors to cross EAGER at or above 2500, thence . . .

... on track 182° to ROZBO, then as assigned. Turbojets maintain 6000, propellers maintain altitude assigned by ATC. Expect clearance to filed altitude within ten minutes after departure.