

APP CRS	Rwy Idg	10000
234°	TDZE	409
	Apt Elev	435

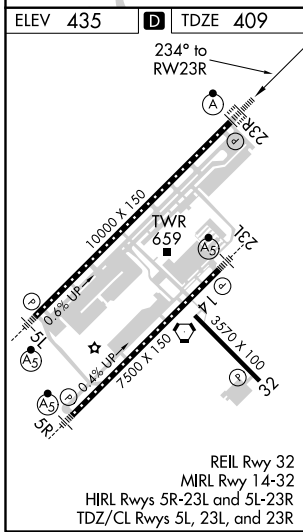
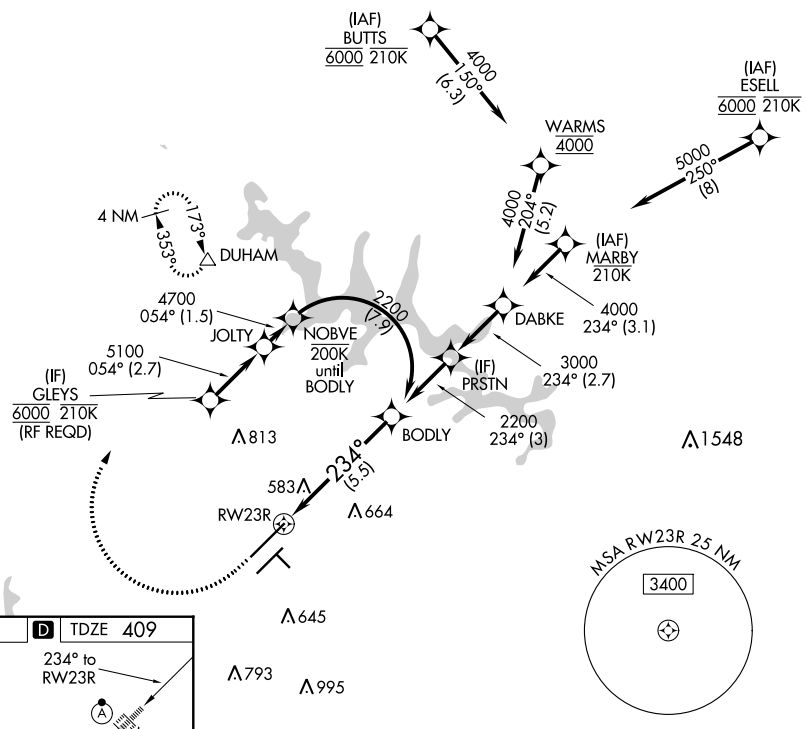
RNAV (RNP) Z RWY 23R

RALEIGH-DURHAM INTL (RDU)

RNP AR APCH-GPS.		ALSF-2		MISSED APPROACH: Climb to 1000 then climbing right turn to 2200 direct DUHAM and hold.		
▼ For uncompensated Baro-VNAV systems, procedure NA below -12°C or above 54°C. For inop ALS, increase RNP 0.15 all Cats visibility to RVR 5500, increase RNP 0.30 all Cats visibility to 1½ SM. Simultaneous approach authorized except for arrivals at GLEYS.						
D-ATIS	RALEIGH APP CON	(EAST) RALEIGH TOWER (WEST)	(EAST) GND CON	(WEST)	CLNC DEL	CPDLC
123.8	127.675 307.9	127.45 257.8 Rwys 5R-23L and 1-4-32	119.3 257.8 Rwy 5L-23R	121.9 348.6 Rwys 5R-23L and 1-4-32	121.7 348.6 Rwy 5L-23R	120.1

SE-2, 02 DEC 2021 to 30 DEC 2021

SE-2, 02 DEC 2021 to 30 DEC 2021



1000	2200	DUHAM	VGSI and RNAV glidepath not coincident (VGSI Angle 3.00°/TCH 69°).	
See planview for multiple IF locations.				
RWY 23R		BODLY 2200		
234°		2200		
5.5 NM		GP 3.00° TCH 55		
CATEGORY	A	B	C	D
RNP 0.15 DA	760/30 351 (400-¾)			
RNP 0.30 DA	910/55 501 (500-1)			

AUTHORIZATION REQUIRED