

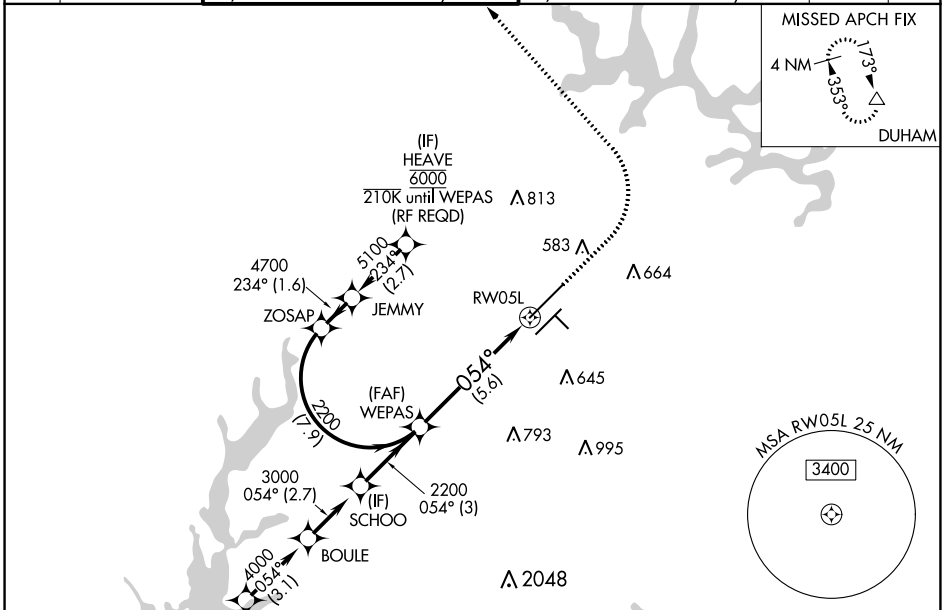
APP CRS	Rwy Idg	10000
054°	TDZE	384
	Apt Elev	435

RNAV (RNP) Z RWY 5L

RALEIGH-DURHAM INTL (RDU)

RNP AR APCH-GPS.		MALSR	MISSED APPROACH: Climb to 1000 then climbing left turn to 2200 direct DUHAM and hold.
<p>▼ For uncompensated Baro-VNAV systems, procedure NA below -12°C or above 54°C. Simultaneous approach authorized, except for arrivals at HEAVE. For inop ALS, increase RNP 0.10 all Cats visibility to RVR 4500.</p>			

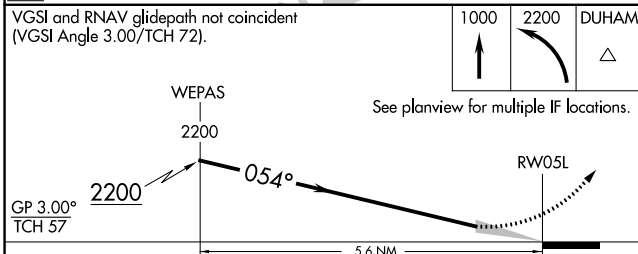
D-ATIS	RALEIGH APP CON	(EAST) RALEIGH TOWER (WEST)	(EAST) GND CON	(WEST)	CLNC DEL	CPDLC
123.8	127.675 307.9	127.45 257.8 Rwys 5R-23L and 14-32	119.3 257.8 Rwy 5L-23R	121.9 348.6 Rwys 5R-23L and 14-32	121.7 348.6 Rwy 5L-23R	120.1



SE-2, 02 DEC 2021 to 30 DEC 2021

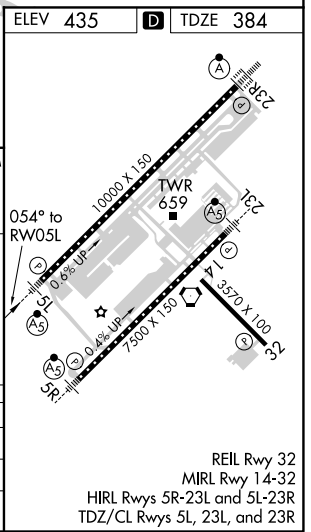
SE-2, 02 DEC 2021 to 30 DEC 2021

(IAF) OTTOS	6000	210K
(IAF) CHWDR	5000	068° (6.4)
(IAF) SCHOO	3000	054° (2.7)
(IAF) BOULE	2200	054° (3)
(FAF) WEPAS	2200	054° (7.9)
(IF) JEMMY	5100	234° (2.7)
(IF) HEAVE	6000	210K until WEPAS (RF REQD)



CATEGORY	A	B	C	D
RNP 0.10 DA		684/24	300 (300-½)	
RNP 0.30 DA		780/35	396 (400-⅙)	

AUTHORIZATION REQUIRED



REIL Rwy 32
MIRL Rwy 14-32
HIRL Rwys 5R-23L and 5L-23R
TDZ/CL Rwys 5L, 23L, and 23R