

APP CRS	Rwy Idg	<b>7500</b>
<b>054°</b>	TDZE	<b>420</b>
	Apt Elev	<b>435</b>

# RNAV (RNP) Z RWY 5R

RALEIGH-DURHAM INTL (RDU)

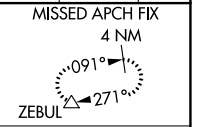
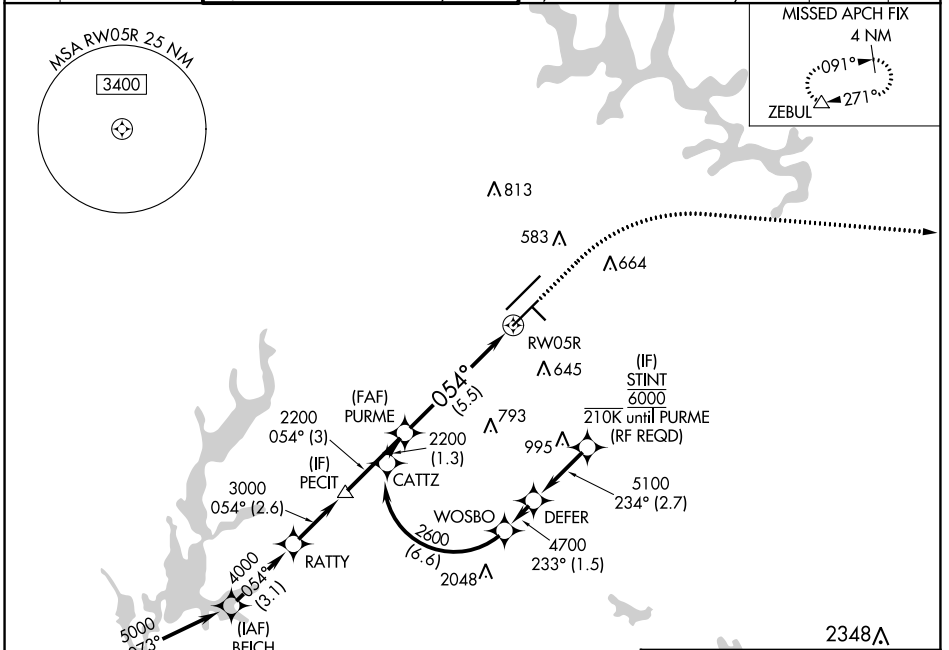
RNP AR APCH-GPS.

▼ For uncompensated Baro-VNAV systems, procedure NA below -12°C or above 54°C. For inop ALS, increase RNP 0.30 all Cais visibility to RVR 4500. Simultaneous approach authorized, except for arrivals at STINT.

MALSR

MISSED APPROACH: Climb to 1000 then climbing right turn to 2600 direct ZEBUL and hold.

D-ATIS	RALEIGH APP CON	(EAST) RALEIGH TOWER (WEST)	(EAST) GND CON	(WEST)	CLNC DEL	CPDLC
<b>123.8</b>	<b>127.675 307.9</b>	<b>127.45 257.8</b> Rwys 5R-23L and 1-4-32	<b>119.3 257.8</b> Rwy 5L-23R	<b>121.9 348.6</b> Rwys 5R-23L and 1-4-32	<b>121.7 348.6</b> Rwy 5L-23R	<b>120.1</b>



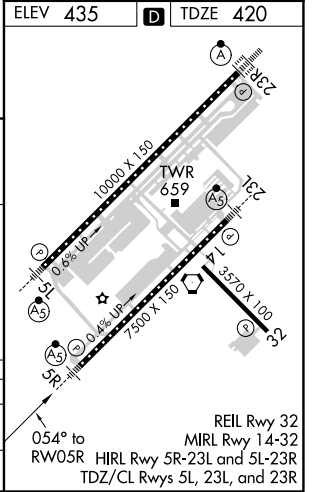
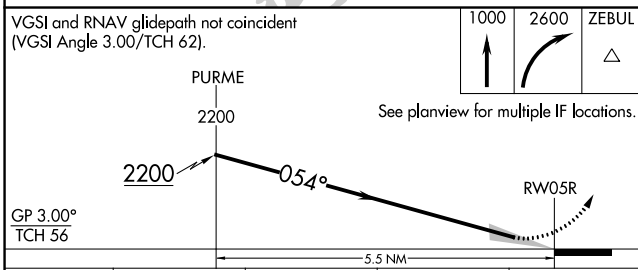
VGSI and RNAV glidepath not coincident (VGSI Angle 3.00/TCH 62).

PURME 2200

054°

RW05R

5.5 NM



CATEGORY	A	B	C	D
RNP 0.30 DA		692/24	272 (300-½)	

**AUTHORIZATION REQUIRED**

SE-2, 02 DEC 2021 to 30 DEC 2021

SE-2, 02 DEC 2021 to 30 DEC 2021