

WAAS CH <b>45613</b> W23A	APP CRS <b>234°</b>	Rwy Idg <b>10000</b> TDZE <b>409</b> Apt Elev <b>435</b>
---------------------------------	------------------------	--

# RNAV (GPS) Y RWY 23R

RALEIGH-DURHAM INTL (RDU)

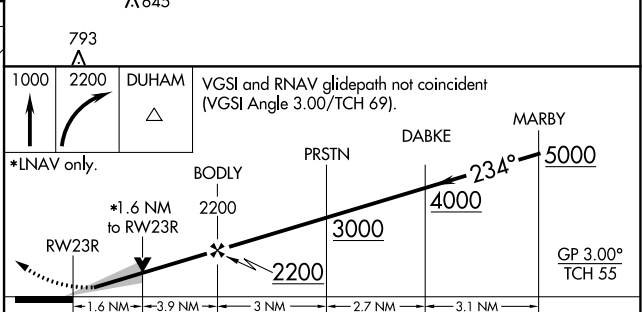
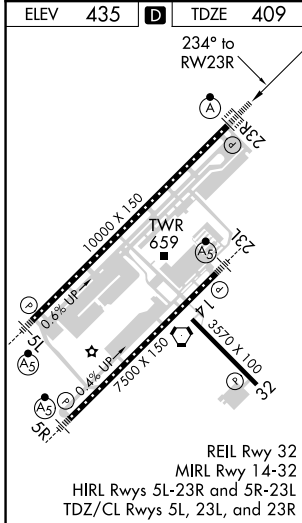
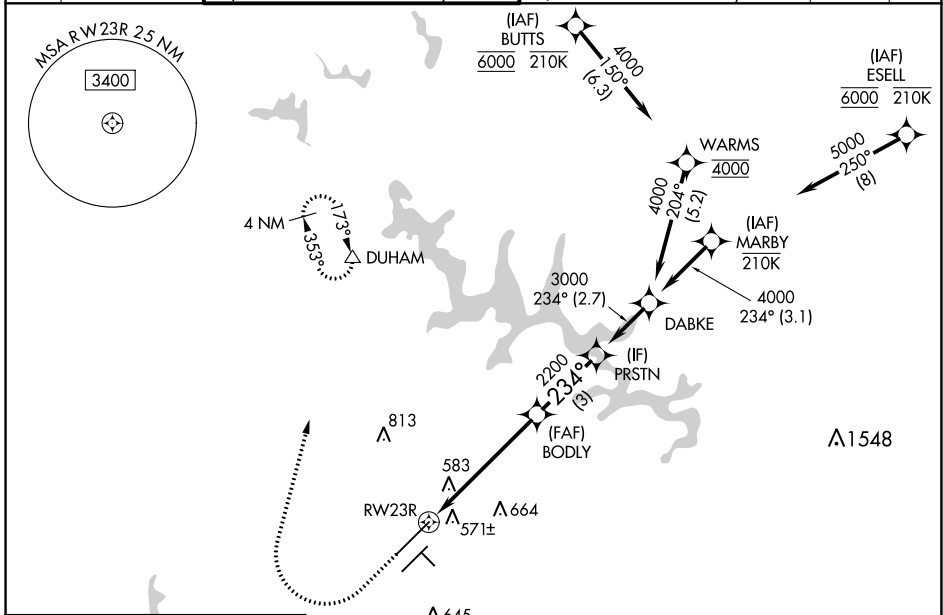
RNP APCH - GPS.

▼ Simultaneous approach authorized. LNAV procedure NA during simultaneous operations.  
 ▲ Use of FD or AP providing RNAV track guidance required during simultaneous operations.  
 ▲ For uncompensated Baro-VNAV systems, LNAV/VNAV NA below -12°C or above 54°C.  
 For inop ALS, increase LNAV Cat C/D visibility to 1% SM.

ALSF-2

MISSED APPROACH: Climb to 1000 then climbing right turn to 2200 direct DUHAM and hold.

D-ATIS	RALEIGH APP CON <b>123.8 127.675 307.9</b>	(EAST) RALEIGH TOWER (WEST) <b>127.45 257.8</b> Rwys 5R-23L and 1-4-32	<b>119.3 257.8</b> Rwy 5L-23R	(EAST) GND CON (WEST) <b>121.9 348.6</b> Rwys 5R-23L and 1-4-32	<b>121.7 348.6</b> Rwy 5L-23R	CLNC DEL <b>120.1</b>	CPDLC
--------	---	--	----------------------------------	---	----------------------------------	--------------------------	-------



	A	B	C	D
LPV DA		609/18	200 (200-1/2)	
LNAV/VNAV DA		735/26	326 (300-1/2)	
LNAV MDA	980/24	571 (600-1/2)	980-1 1/4	571 (600-1 1/4)
<b>C</b> CIRCLING	980-1	545 (600-1)	1020-1 5/8 585 (600-1 5/8)	1180-2 1/2 745 (800-2 1/2)

SE-2, 02 DEC 2021 to 30 DEC 2021

SE-2, 02 DEC 2021 to 30 DEC 2021