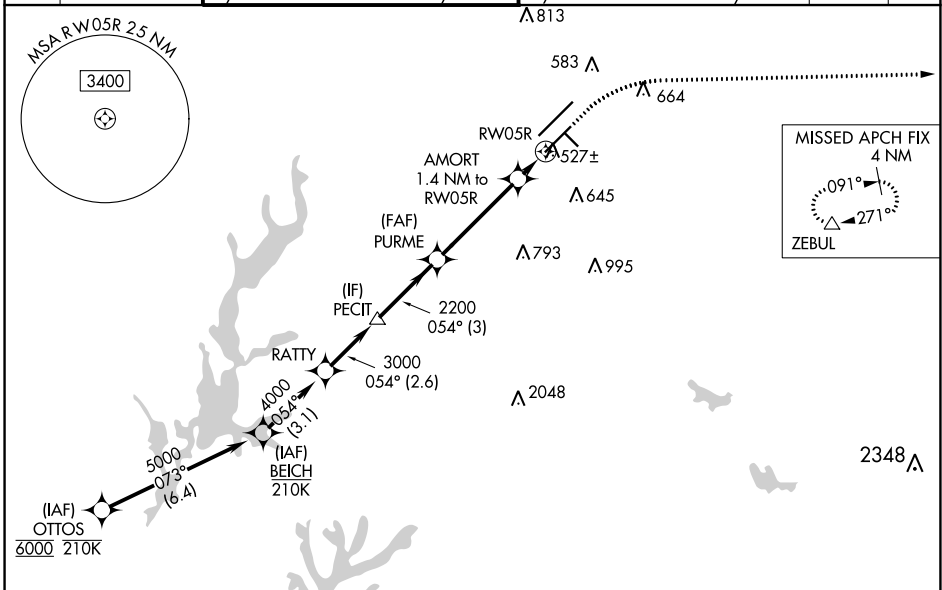


WAAS CH 90213 W05B	APP CRS 054°	Rwy Idg 7500 TDZE 420 Apt Elev 435
--	------------------------	---

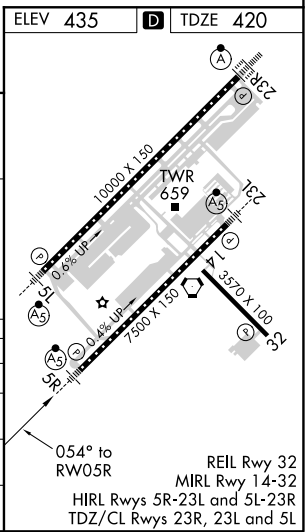
RNAV (GPS) Y RWY 5R

RALEIGH-DURHAM INTL (RDU)

RNP APCH-GPS.		Simultaneous approach authorized. LNAV procedure NA during simultaneous operations. For uncompensated Baro-VNAV systems, LNAV/VNAV NA below -12°C or above 54°C. Use of FD or AP required during simultaneous operations. For inop ALS, increase LNAV/VNAV all Cats visibility to RVR 4500 and LNAV Cats C/D visibility to RVR 5500. # RVR 1800 authorized with use of FD or AP or HUD to DA.		MALSR		MISSED APPROACH: Climb to 1000 then climbing right turn to 2600 direct ZEBUL and hold.	
D-ATIS	RALEIGH APP CON	(EAST) RALEIGH TOWER 127.45 257.8 Rwys 5R-23L and 14-32	(WEST) 119.3 257.8 Rwy 5L-23R	(EAST) GND CON 121.9 348.6 Rwys 5R-23L and 14-32	(WEST) 121.7 348.6 Rwy 5L-23R	CLNC DEL 120.1	CPDLC



ELEV 435		D TDZE 420	
VGSI and RNAV glidepath not coincident (VGSI Angle 3.00/TCH 62). BEICH RATTY PECIT PURME AMORT RWY 5R 5000 4000 3000 2200 900 GP 3.00° TCH 56 3.1 NM 2.6 NM 3 NM 4.1 NM 1.4 NM			
CATEGORY	A	B	D
LPV DA	#620/24		200 (200-½)
LNAV/VNAV DA	688/24		268 (300-½)
LNAV MDA	780/24	360 (400-½)	780/40 360 (400-¾)
CIRCLING	960-1	525 (600-1)	1020-1½ 1180-2½ 585 (600-1½) 745 (800-2½)



SE-2, 02 DEC 2021 to 30 DEC 2021

SE-2, 02 DEC 2021 to 30 DEC 2021