

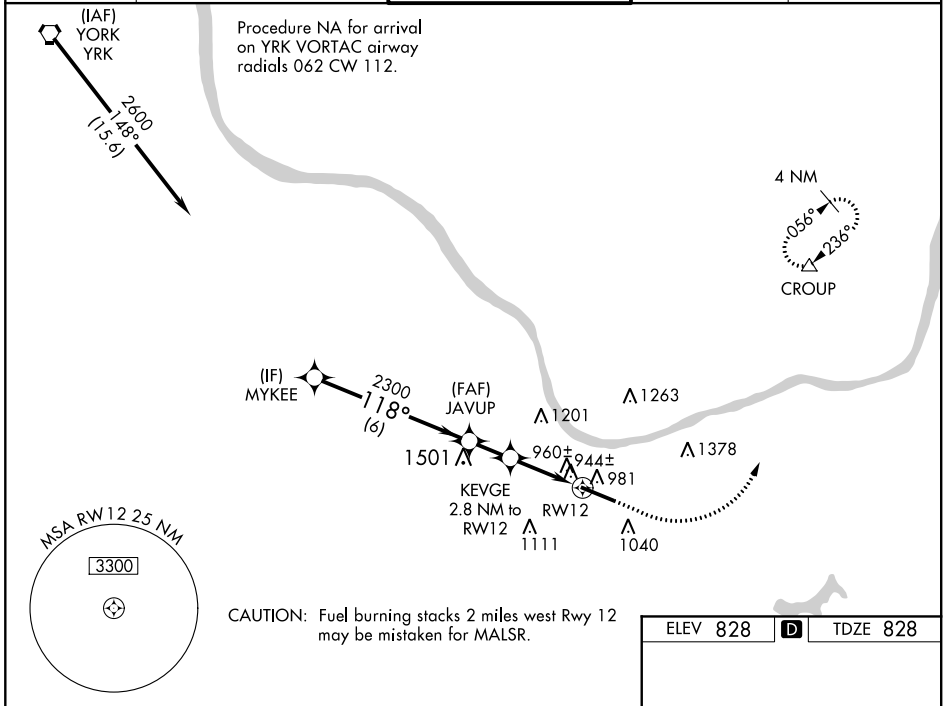
WAAS CH 45699 W12A	APP CRS 118°	Rwy Idg TDZE Apt Elev	6516 828 828
--	------------------------	-----------------------------	---

RNAV (GPS) RWY 12

TRI-STATE/MILTON J FERGUSON FLD (HTS)

RNP APCH.	MALSRL	MISSED APPROACH: Climb to 1700 then climbing left turn to 3000 direct CROUP and hold.
<p>▽ For inoperative ALS, increase LNAV/VNAV all Cats visibility to RVR 4500, LNAV Cat A/B to RVR 5500, Cat C/D to RVR 6000. For uncompensated Baro-VNAV systems, LNAV/VNAV NA below -16°C or above 38°C. Rwy 12 helicopter visibility reduction below ¾ SM NA. Inoperative table does not apply to LPV.</p> <p>△ ASR</p>		

ATIS 125.2	HUNTINGTON APP CON 119.75 270.1	HUNTINGTON TOWER 118.5 270.1	GND CON 121.9	CLNC DEL 118.05
----------------------	---	--	-------------------------	---------------------------



NE-4, 02 DEC 2021 to 30 DEC 2021

NE-4, 02 DEC 2021 to 30 DEC 2021

	1700	3000	CROUP
	↑	↻	△
			*LNAV only.
MYKEE	JAVUP	KEVGE	
2600	2300	2.8 NM to RWY 12	
GP 3.00° TCH 56	118°	*1.1 NM to RWY 12	
	2300	*1760	
	6 NM	1.7 NM	1.1 NM
CATEGORY	A	B	C
LPV DA		1028/40	200 (200-¾)
LNAV/VNAV DA		1126/40	298 (300-¾)
LNAV MDA		1220/40	392 (400-¾)
CIRCLING	1340-1 512 (600-1)	1380-1 552 (600-1)	1520-2 692 (700-2)
			1820-3 992 (1000-3)

