

ABERDEEN, MARYLAND

# RNAV (GPS) RWY 22

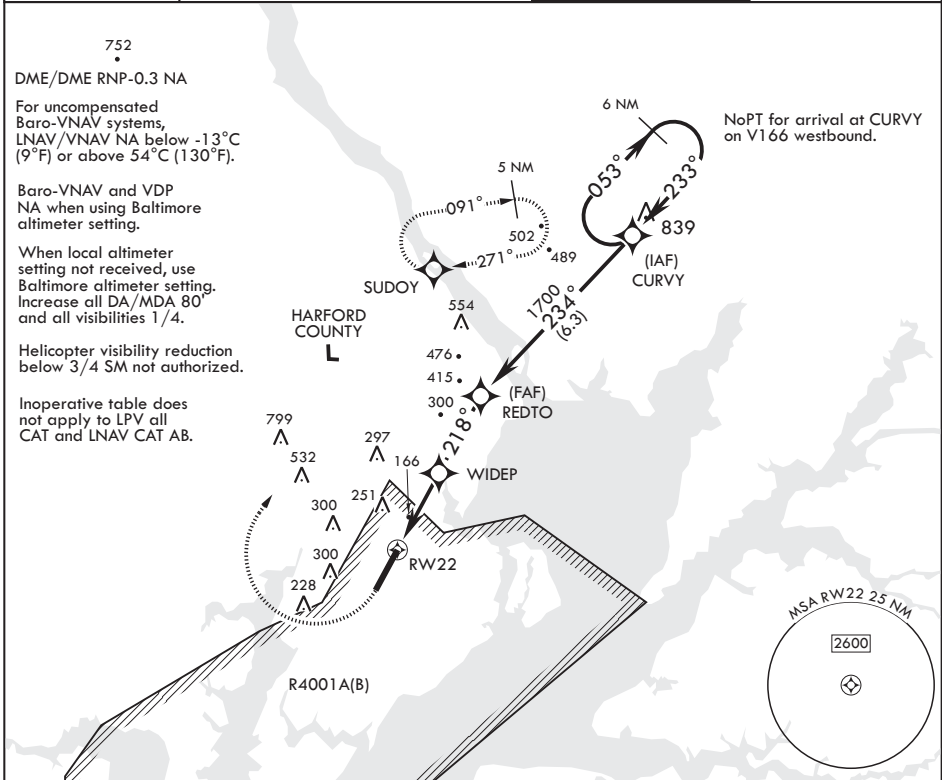
WAAS CH 70342 W22A	APCH CRS 218°	Rwy ldg 7998	TDZE 45
		Arpt Elev 45	

AL-555 (USA)

PHILLIPS AAF (ABERDEEN PROVING GROUND) (KAPG)

**MISSED APPROACH:** Climb to 500, then climbing right turn to 2000 direct SUDOY and hold.

ATIS* 124.425	POTOMAC APP CON/DEP CON 125.525 291.625	TOWER* 126.15 229.6	GND CON 121.9
------------------	--	------------------------	------------------



NE-3, 02 DEC 2021 to 30 DEC 2021

NE-3, 02 DEC 2021 to 30 DEC 2021

500	2000	SUDOY	VGSI and RNAV glidepath not coincident (VGSI Angle 3.00°/TCH 49).	CURVY	ELEV 45	TDZE 45
Visual segment - Obstacles						
*LNAV only		<p>RW22 *1.2 NM to RW22</p> <p>WIDEP 900*</p> <p>REDTO 1700</p> <p>CURVY 2100</p> <p>GP 3.00° TCH 59</p>		<p>TWR 147</p> <p>7998 x 200</p> <p>HIRL all Rwys REIL Rwy 22</p>		
CATEGORY	A	B	C	D		
LPV DA	295-1		250	(300-1)		
LNAV/VNAV DA	560-1 $\frac{3}{8}$		515	(600-1 $\frac{3}{8}$ )		
LNAV MDA	560-1 515 (600-1)		560-1 $\frac{3}{8}$	515 (600-1 $\frac{3}{8}$ )		
CIRCLING	560-1		640-1	660-1 $\frac{3}{4}$	880-2 $\frac{3}{4}$	
	515 (600-1)		595 (600-1)	615 (700-1 $\frac{3}{4}$ )	835 (900-2 $\frac{3}{4}$ )	

ABERDEEN, MARYLAND

39°28'N - 76°10'W PHILLIPS AAF (ABERDEEN PROVING GROUND) (KAPG)

Amdt 2C 31DEC20

# RNAV (GPS) RWY 22