

ILS RWY 19R (CAT II)

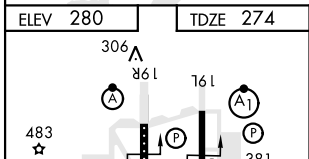
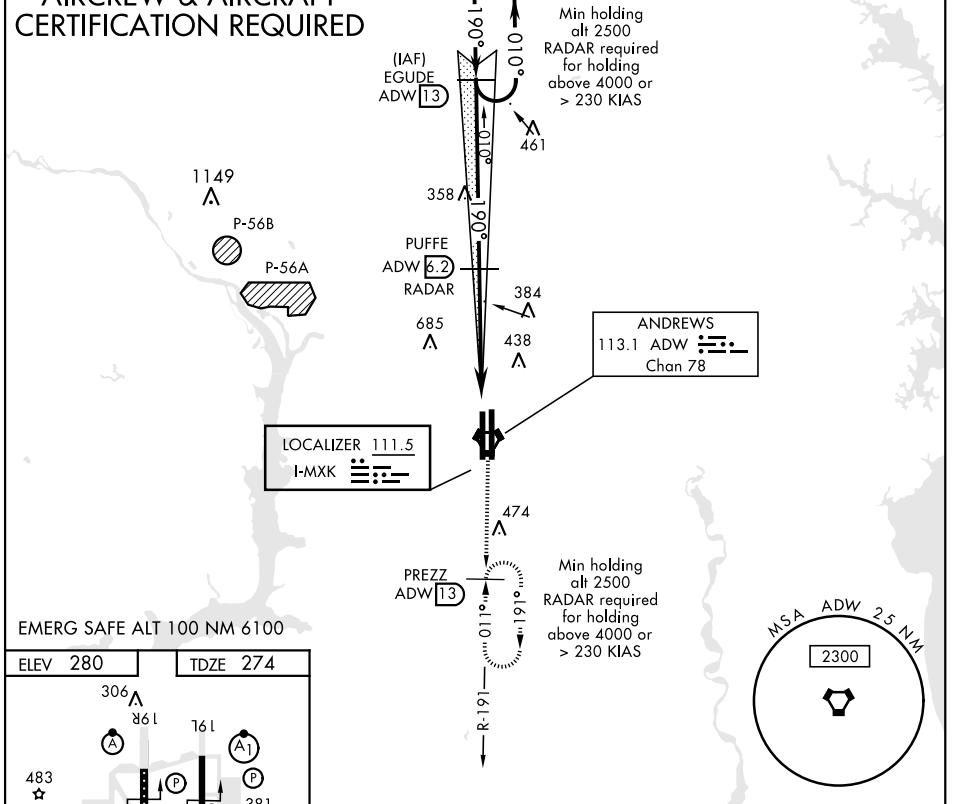
LOC I-MXK 111.5	APCH CRS 190°	Rwy ldg TDZE Arprt Elev 9318 274 280	AL-561 [USAF]	JOINT BASE ANDREWS (KADW)
---------------------------	-------------------------	--	---------------	---------------------------

RADAR or DME required.	ALS-F-2	† MISSED APPROACH: Climbing to 2500, intercept ADW VORTAC R-191 to PREZZ and hold.
------------------------	---------	--

ATIS 133.675 251.05	POTOMAC APP CON 128.0 335.5	ANDREWS TOWER 118.4 349.0	GND CON 121.8 275.8	CLNC DEL 127.55 285.475	CPDLC
-------------------------------	---------------------------------------	-------------------------------------	-------------------------------	-----------------------------------	-------

CATEGORY II ILS-SPECIAL AIRCREW & AIRCRAFT CERTIFICATION REQUIRED

† For aircraft not equipped with TACAN or suitable RNAV system with GPS: Fly hdg 190°, maintain 2000 expect RADAR vectors.



ELEV 280	TDZE 274	VGSIs and ILS glidepath not coincident (VGSIs Angle 3.00/TCH 71).		2500	PREZZ ADW R-191 13																
TDZL/CL Rwy 1L-19R HIRL all Rwy	TWR 435	EGUDE 13	PUFFE 6.2 RADAR	5.2 NM																	
<table border="1"> <tr> <th>CATEGORY</th> <td>A</td> <td>B</td> <td>C</td> <td>D</td> <td>E</td> </tr> <tr> <th>S-ILS 19R</th> <td colspan="2">RA 99/12</td> <td>100</td> <td colspan="2">DA 374</td> </tr> </table>		CATEGORY	A	B	C	D	E	S-ILS 19R	RA 99/12		100	DA 374		<table border="1"> <tr> <th>GS 3.00° TCH 55</th> <td>1099</td> </tr> </table>		GS 3.00° TCH 55	1099	<table border="1"> <tr> <th>1099</th> <td>1099</td> </tr> </table>		1099	1099
CATEGORY	A	B	C	D	E																
S-ILS 19R	RA 99/12		100	DA 374																	
GS 3.00° TCH 55	1099																				
1099	1099																				

ILS RWY 19R (CAT II)

NE-3, 02 DEC 2021 to 30 DEC 2021

NE-3, 02 DEC 2021 to 30 DEC 2021