

ILS RWY 19R (CAT III)

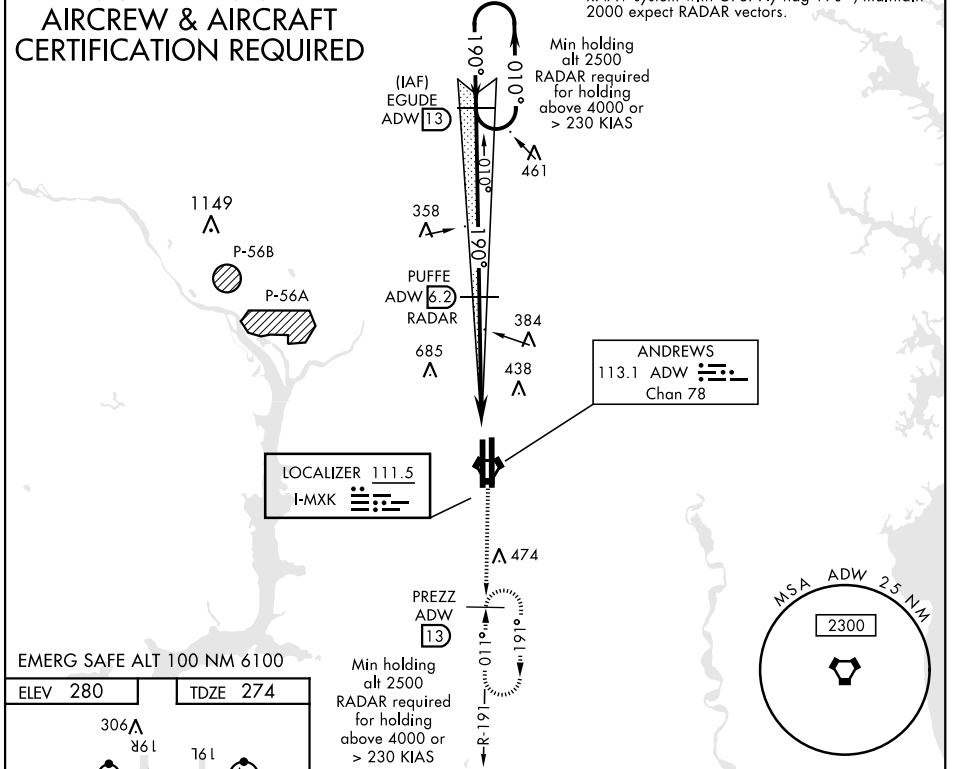
LOC I-MXK 111.5	APCH CRS 190°	Rwy Ldg TDZE 274 Arprt Elev 280	AL-561 [USAF]	JOINT BASE ANDREWS (KADW)
---------------------------	-------------------------	--	---------------	---------------------------

ATC RADAR or DME required.	ALSIF-2	† MISSED APPROACH: Climbing to 2500, intercept ADW VORTAC R-191 to PREZZ and hold.
----------------------------	---------	--

ATIS 133.675 251.05	POTOMAC APP CON 128.0 335.5	ANDREWS TOWER 118.4 349.0	GND CON 121.8 275.8	CLNC DEL 127.55 285.475	CPDLC
-------------------------------	---------------------------------------	-------------------------------------	-------------------------------	-----------------------------------	-------

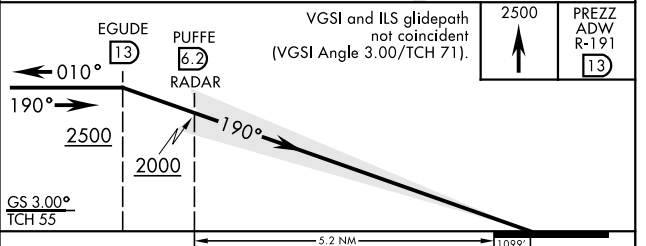
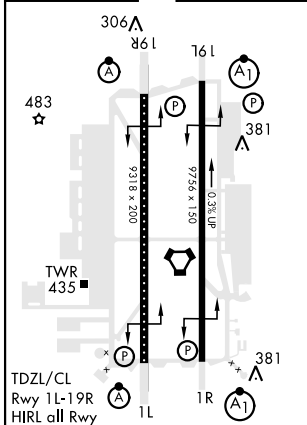
CATEGORY III ILS-SPECIAL AIRCREW & AIRCRAFT CERTIFICATION REQUIRED

† For aircraft not equipped with TACAN or suitable RNAV system with GPS: Fly hdg 190°, maintain 2000 expect RADAR vectors.



EMERG SAFE ALT 100 NM 6100

ELEV 280	TDZE 274
----------	----------



CATEGORY	A	B	C	D	E
S-ILS 19R		CAT IIIa	RVR 07		
S-ILS 19R		CAT IIIb	RVR 06		
S-ILS 19R		CAT IIIc	NA		

ILS RWY 19R (CAT III)

NE-3, 02 DEC 2021 to 30 DEC 2021

NE-3, 02 DEC 2021 to 30 DEC 2021