

CAMP SPRINGS, MARYLAND

ILS RWY 1L (CAT III)

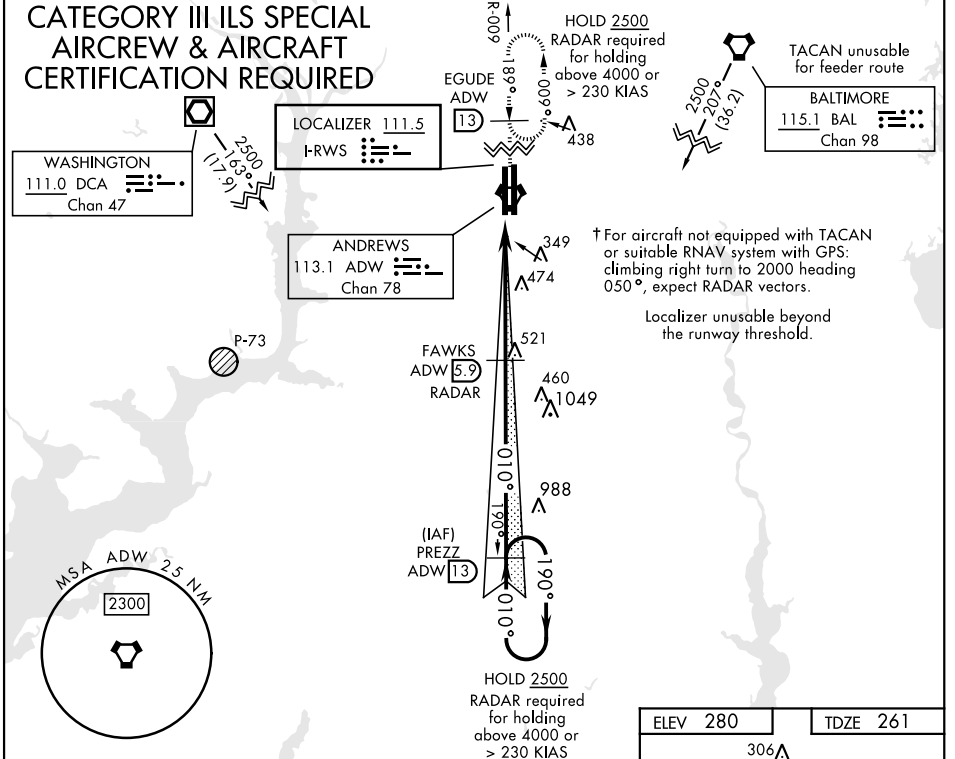
JOINT BASE ANDREWS (KADW)

LOC I-RWS 111.5	APCH CRS 010°	Rwy ldg TDZE Arprt Elev 9318 261 280	AL-561 [USAF]
---------------------------	-------------------------	--	---------------

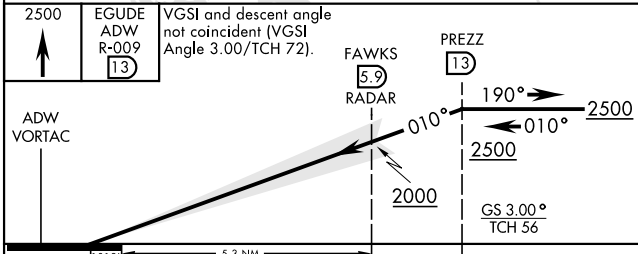
RADAR or DME required.		ALSF-2 	† MISSED APPROACH: Climbing to 2500, intercept ADW VORTAC R-009 to EGUDE and hold.
------------------------	--	------------	--

ATIS 133.675 251.05	POTOMAC APP CON 128.0 335.5	TOWER 118.4 349.0	GND CON 121.8 275.8	CLNC DEL 127.55 285.475	CPDLC
-------------------------------	---------------------------------------	------------------------------------	-------------------------------	-----------------------------------	-------

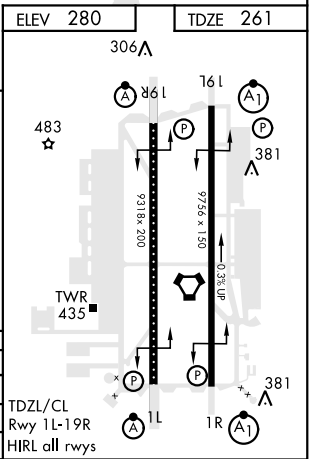
CATEGORY III ILS SPECIAL AIRCREW & AIRCRAFT CERTIFICATION REQUIRED



EMERG SAFE ALT 100 NM 6100



CATEGORY	A	B	C	D	E
S-ILS 1L	S-ILS 1L CAT IIIa		RVR 07		
S-ILS 1L	S-ILS 1L CAT IIIb		RVR 06		
S-ILS 1L	S-ILS 1L CAT IIIc		NA		



CAMP SPRINGS, MARYLAND

38° 49' N-76° 52' W

JOINT BASE ANDREWS (KADW)

Amtd 3 02DEC21

ILS RWY 1L (CAT III)

NE-3, 02 DEC 2021 to 30 DEC 2021

NE-3, 02 DEC 2021 to 30 DEC 2021