

CAMP SPRINGS, MARYLAND

# ILS or LOC RWY 19L

LOC I-GQZ <b>110.5</b>	APCH CRS <b>190°</b>	Rwy ldg TDZE Arprt Elev	<b>9756</b> <b>279</b> <b>280</b>
---------------------------	-------------------------	-------------------------------	---

AL-561 (USAF)

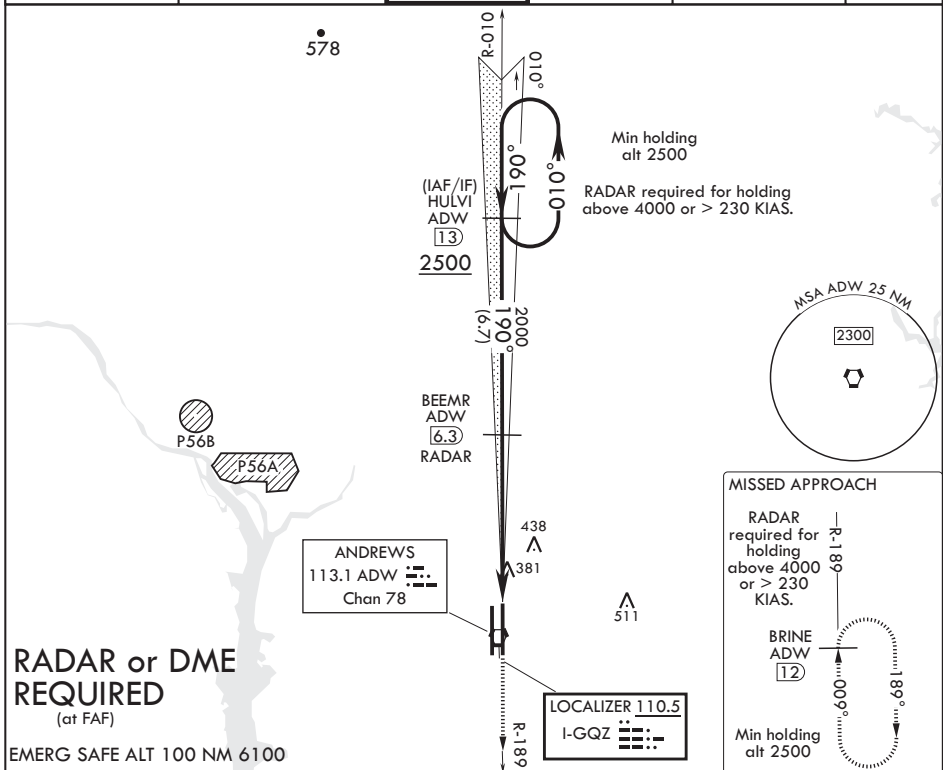
JOINT BASE ANDREWS (KADW)

**▼** \* When ALS inop, increase RVR to 40, vis to 3/4.  
 \*\* When ALS inop, increase CAT AB RVR to 55, vis to 1 mile;  
 CAT CDE RVR to 60, vis to 1 1/8 mile.  
 \*\*\* Circling not authorized W of Rwy 1L-19R.



MISSED APPROACH: Climb to 2500 via ADW R-189 to BRINE/ADW 12 DME and hold.

ATIS <b>133.675 251.05</b>	POTOMAC APP CON <b>128.0 335.5</b>	TOWER <b>118.4 349.0</b>	GND CON <b>121.8 275.8</b>	CLNC DEL <b>127.55 285.475</b>	CPDLC
-------------------------------	---------------------------------------	-----------------------------	-------------------------------	-----------------------------------	-------



**RADAR or DME REQUIRED**  
(at FAF)

EMERG SAFE ALT 100 NM 6100

<b>2500</b>	<b>010°</b>	<b>190°</b>	<b>HULVI 13</b>	<b>BEEMR 6.3 RADAR</b>	<b>2500 ADW R-189</b>	<b>BRINE ADW 12</b>	<b>ELEV 280</b>	<b>TDZE 279</b>
<b>2500</b>	<b>190°</b>	<b>190°</b>	<b>2000</b>	<b>† LOC only</b>	<b>† 2.1</b>	<b>FEPOK 1.1</b>	<b>VORTAC</b>	<b>BCN 483</b>
<b>GS 3.00°</b>								<b>TWR 435</b>
<b>TCH 56</b>								<b>11L 1R</b>
<b>CATEGORY</b>	<b>A</b>	<b>B</b>	<b>C</b>	<b>D</b>	<b>E</b>			<b>430</b>
<b>S-ILS 19L*</b>		<b>479/24</b>	<b>200</b>	<b>(200-1/2)</b>				
<b>S-LOC 19L**</b>		<b>680/24 401 (400-1/2)</b>	<b>680/40</b>	<b>401 (400-3/4)</b>				
<b>CIRCLING***</b>		<b>780-1 500 (500-1)</b>	<b>780-1 1/2 500 (500-1 1/2)</b>	<b>840-2 560 (600-2)</b>				
								<b>HIRL all Rwys</b>
								<b>TDZL/CL Rwys 1L, 19R</b>
								<b>FAF to MAP 5.2 NM</b>
								<b>Knots 60 90 120 150 180</b>
								<b>Min:Sec 5:12 3:28 2:36 2:05 1:44</b>

CAMP SPRINGS, MARYLAND

38°49'N - 76°52'W

JOINT BASE ANDREWS (KADW)

Orig 15AUG19

# ILS or LOC RWY 19L

NE-3, 02 DEC 2021 to 30 DEC 2021

NE-3, 02 DEC 2021 to 30 DEC 2021