

CAMP SPRINGS, MARYLAND

# ILS or LOC RWY 19R

LOC I-MXK <b>111.5</b>	APCH CRS <b>190°</b>	Rwy Idg <b>9318</b>
		TDZE <b>274</b>
		Arprt Elev <b>280</b>

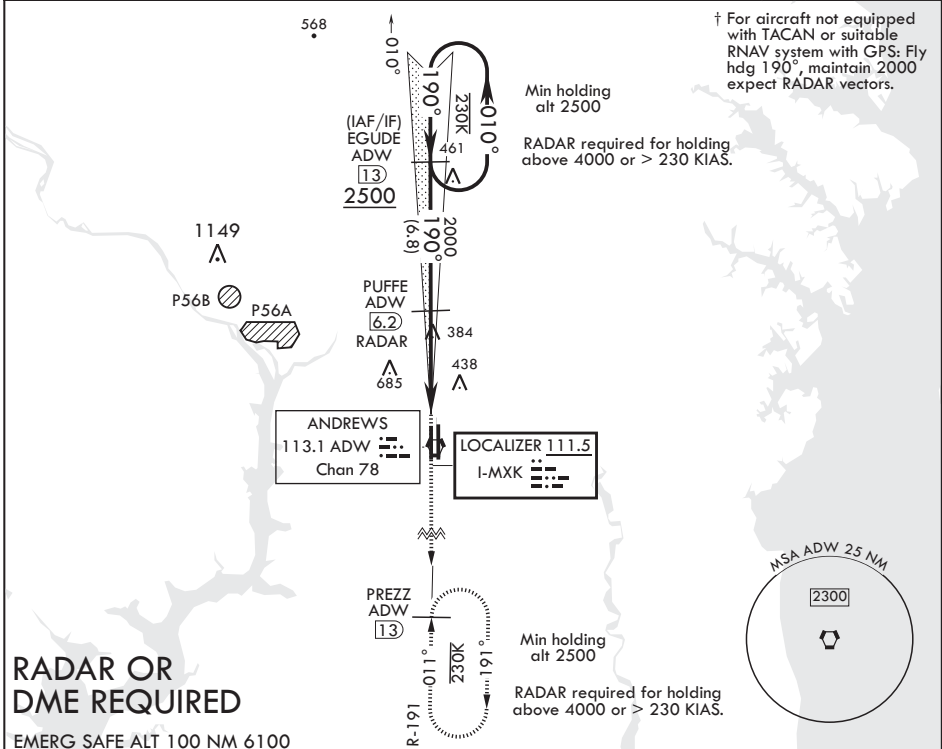
AL-561 (USAF)

JOINT BASE ANDREWS (KADW)

\* When ALS inop, increase RVR to 40, vis to 3/4 mile.  
 When TDZL/CL inop, increase RVR to 24.  
 \*\* When ALS inop, increase CAT AB RVR to 55, vis to 1 mile,  
 CAT CDE RVR to 60, vis to 1 1/8 miles.  
 \*\*\* Circling NA West of Rwy 1L-19R.

† MISSED APPROACH: Climb to 2500, intercept ADW VORTAC  
 R-191 to PREZZ and hold.

ATIS <b>133.675 251.05</b>	POTOMAC APP CON <b>128.0 335.5</b>	TOWER <b>118.4 349.0</b>	GND CON <b>121.8 275.8</b>	CLNC DEL <b>127.55 285.475</b>	CPDLC
-------------------------------	---------------------------------------	-----------------------------	-------------------------------	-----------------------------------	-------



## RADAR OR DME REQUIRED

EMERG SAFE ALT 100 NM 6100

<p>                 2500 ← 010°                  190° →                  190°                  2000                  PUFFE (6.2) RADAR                  ‡ LOC only                  BARLE (1.5)                  VORTAC                  430 A                  0.3% DOWN                  921.8 x 200                  975.6 x 150                  161                  861                  190° 5.3NM from FAF                  BCN 435                  TWR 483                  1L                  1R                  190° 5.3NM from FAF             </p>	<p>                 ELEV 280                  TDZE 274                  2500 ADW R-191                  PREZZ ADW (13)             </p>				
<p>                 VGSi and ILS glidepath not coincident (VGSi Angle 3.00/TCH 71).                  GS 3.00° TCH 55             </p>	<p>                 4.7 NM                  0.5             </p>				
CATEGORY	A	B	C	D	E
S-ILS 19R*	474/18		200	(200-1/2)	
S-LOC 19R**	660/24 386 (400-1/2)		660/35	386 (400-5/8)	
CIRCLING***	780-1 500 (500-1)		780-1 1/2 500 (500-1 1/2)	840-2 560 (600-2)	
HIRL all Rwys TDZL/CL Rwys 1L, 19R					
FAF to MAP 4.7 NM					
Knots 60 90 120 150 180					
Min:Sec 4:42 3:08 2:21 1:53 1:34					

CAMP SPRINGS, MARYLAND

38°49'N - 76°52'W

JOINT BASE ANDREWS (KADW)

Amdt 3 15AUG19

# ILS or LOC RWY 19R

NE-3, 02 DEC 2021 to 30 DEC 2021

NE-3, 02 DEC 2021 to 30 DEC 2021