

JEFSN ONE DEPARTURE (RNAV) (JEFSN1•JEFSN)

JOINT BASE ANDREWS (KADW)

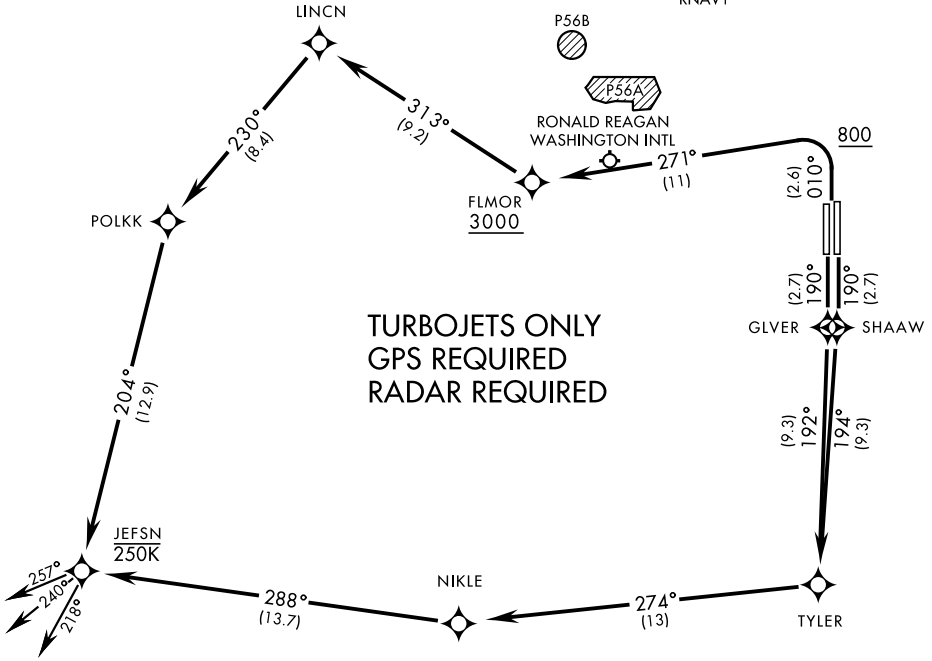
CAMP SPRINGS, MARYLAND

ATIS 133.675 251.05
 CPDLC
 GND CON
 121.8 275.8
 ANDREWS TOWER
 118.4 349.0
 POTOMAC TRACON DEP CON
 118.95 257.2

SL-561 [USAF]
 (PAGE 1 of 2)

**TOP ALTITUDE:
 3000**

Max speed 250KIAS until JEFNSN.
 Prohibited (P56) 1.5NM north
 of DCA avoid surface to FL180.
 RNAV1



(TRANSITIONS CONTINUED
 ON PAGE 2 of 2)

DEPARTURE ROUTE DESCRIPTION

TAKE-OFF RWY 1L/1R: Climb on heading 010° to 800, then climbing left turn to 3000 direct FLMOR. Then via depicted route to JEFNSN, thence...

TAKE-OFF RWY 19L: Climb on heading 190° direct SHAAW then via depicted route to JEFNSN, thence...

TAKE-OFF RWY 19R: Climb on heading 190° direct GLVER then via depicted route to JEFNSN, thence...

... on assigned transition. Maintain 3000, expect further clearance to filed alt within ten (10) minutes after departure.

- FLASK TRANSITION (JEFSN1 • FLASK)
- GLANC TRANSITION (JEFSN1 • GLANC)
- MAULS TRANSITION (JEFSN1 • MAULS)
- MELTN TRANSITION (JEFSN1 • MELTN)
- RRSIN TRANSITION (JEFSN1 • RRSIN)

JEFSN ONE DEPARTURE (RNAV) (JEFSN1•JEFSN)

Amdt 3 26MAR20

CAMP SPRINGS, MARYLAND
 JOINT BASE ANDREWS (KADW)

NE-3, 02 DEC 2021 to 30 DEC 2021

NE-3, 02 DEC 2021 to 30 DEC 2021