

CAMP SPRINGS, MARYLAND

RNAV (GPS) RWY 19R

WAAS CH 52204 W19B	APCH CRS 190°	Rwy ldg TDZE Arprt Elev	9318 274 280
--------------------------	------------------	-------------------------------	--------------------

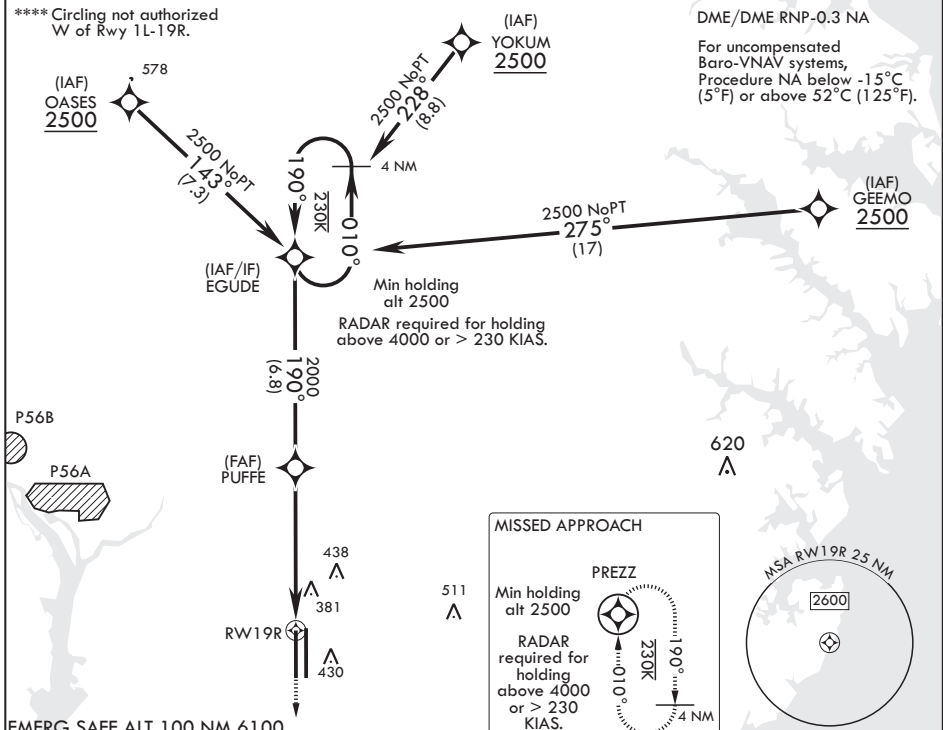
AL-561 (USAF)

JOINT BASE ANDREWS (KADW)

V * When ALS inop, increase RVR to 40, vis to 3/4. When TDZ/CL lights inop, increase RVR to 24.
 ** When ALS inop, increase vis to 1 1/4 miles.
 *** When ALS inop, increase CAT AB RVR to 55, vis to 1 mile; CAT CDE vis to 1 1/4 miles.

ALSF-2 MISSED APPROACH: Climb to 2500 direct PREZZ and hold.

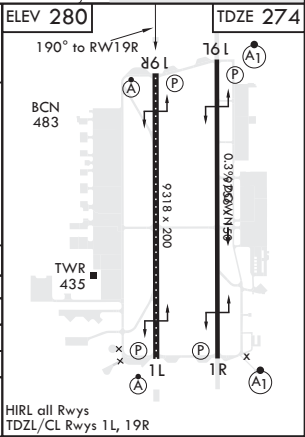
ATIS 133.675 251.05	POTOMAC APP CON 128.0 335.5	TOWER 118.4 349.0	GND CON 121.8 275.8	CLNC DEL 127.55 285.475	CPDLC
------------------------	--------------------------------	----------------------	------------------------	----------------------------	-------



NE-3, 02 DEC 2021 to 30 DEC 2021

NE-3, 02 DEC 2021 to 30 DEC 2021

GP 3.00° TCH 55	EGUDE	VGSI and RNAV glidepath not coincident (VGSI Angle 3.00/TCH 70.62).	2500	PREZZ	ELEV 280	TDZE 274
	PUFFE	† LNAV only				
		† 1.1 NM to RWY 19R				
		5.2 NM				
CATEGORY	A	B	C	D	E	
LPV DA*	474/18		200	(200-1/2)		
LNAV/VNAV DA**	697/40		423	(500-3/4)		
LNAV MDA***	700/24	426 (500-1/2)	700/40	426 (500-3/4)		
C CIRCLING****	780-1	500 (500-1)	780-1 1/2 500 (500-1 1/2)	840-2	560 (600-2)	



CAMP SPRINGS, MARYLAND

38°49'N - 76°52'W

JOINT BASE ANDREWS (KADW)

Orig 15AUG19

RNAV (GPS) RWY 19R