

CAMP SPRINGS, MARYLAND

RNAV (RNP) Y RWY 01L

APCH CRS 010°	Rwy Idg 9318
	TDZE 261
	Arpt Elev 280

AL-561 (USAF)

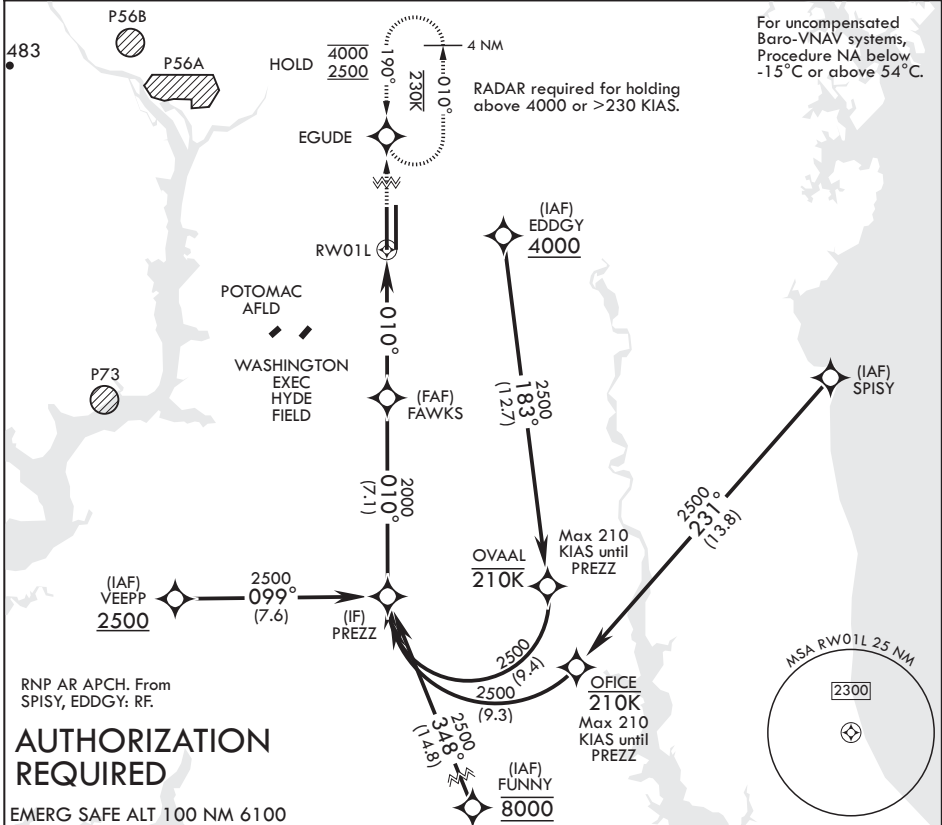
JOINT BASE ANDREWS (KADW)

V * When ALS inop, increase RVR to 55, vis to 1 mile.
** When ALS inop, increase vis to 1 3/8 miles.

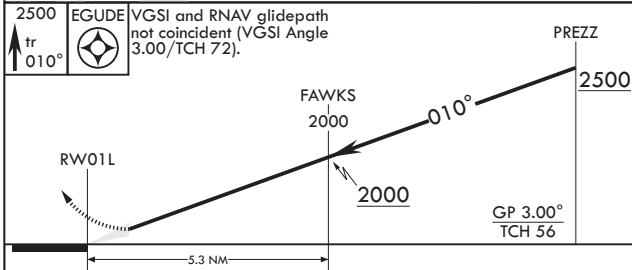


MISSED APPROACH: Climb to 2500 on track 010° to EGUDE and hold.

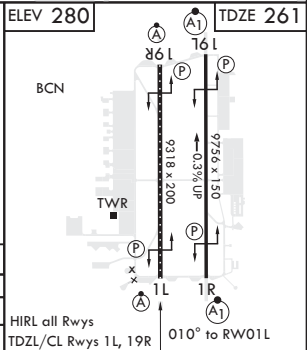
ATIS 133.675 251.05	POTOMAC APP CON 128.0 335.5	TOWER 118.4 349.0	GND CON 121.8 275.8	CLNC DEL 127.55 285.475	CPDLC
-------------------------------	---------------------------------------	-----------------------------	-------------------------------	-----------------------------------	-------



AUTHORIZATION REQUIRED



CATEGORY	A	B	C	D
RNP 0.15 DA*	641/35	380	(400-5%)	
RNP 0.30 DA**	717/45	456	(500-7%)	



CAMP SPRINGS, MARYLAND

38°49'N - 76°52'W

JOINT BASE ANDREWS (KADW)

Amdt 1 02DEC21
TERPS

RNAV (RNP) Y RWY 01L

NE-3, 02 DEC 2021 to 30 DEC 2021

NE-3, 02 DEC 2021 to 30 DEC 2021