

CAMP SPRINGS, MARYLAND

# RNAV (GPS) Z RWY 1L

WAAS CH 52205 W01A	APCH CRS 010°	Rwy ldg TDZE Arprt Elev	9318 261 280
--------------------------	------------------	-------------------------------	--------------------

AL-561 (USAF)

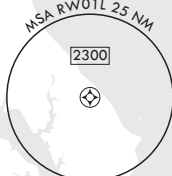
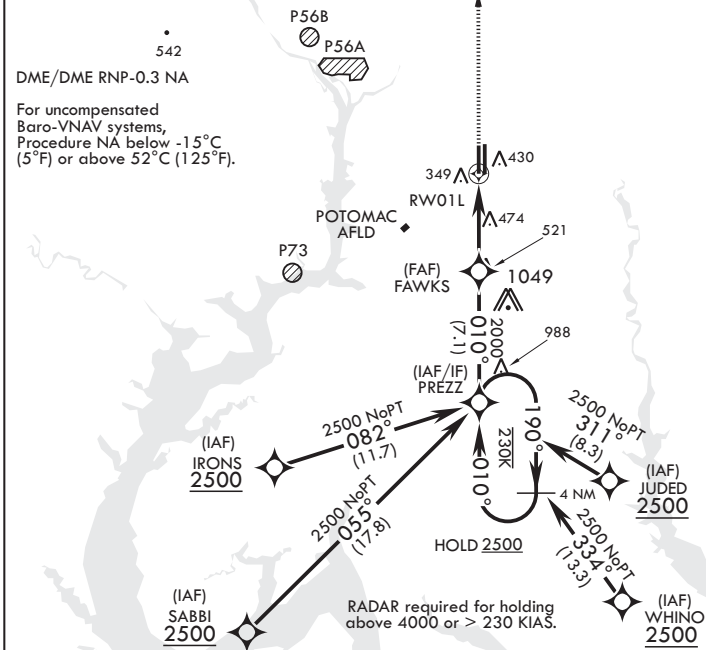
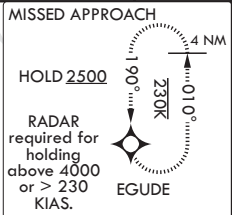
JOINT BASE ANDREWS (KADW)

**⚠** \* When ALS inop, increase RVR to 40, vis to ¾. When TDZ/CL lights inop, increase RVR to 24.  
 \*\* When ALS inop increase vis to 1 1/4 miles.  
 \*\*\* When ALS inop increase CAT AB RVR to 55, vis to 1 mile; CAT CDE vis to 1 1/4 miles.

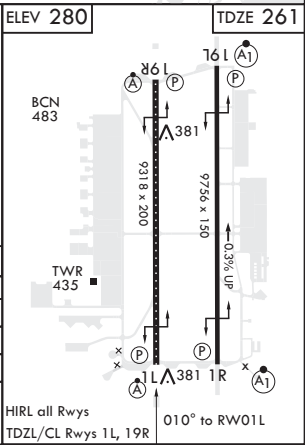
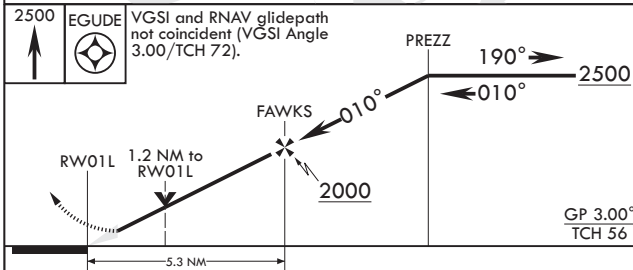
**ALS-F-2** MISSED APPROACH: Climb to 2500 direct EGUDE and hold.

ATIS 133.675 251.05	POTOMAC APP CON 128.0 335.5	TOWER 118.4 349.0	GND CON 121.8 275.8	CLNC DEL 127.55 285.475	CPDLC
------------------------	--------------------------------	----------------------	------------------------	----------------------------	-------

\*\*\*\* Circling not authorized W of Rwy 1L-19R.



EMERG SAFE ALT 100 NM 6100



CATEGORY	A	B	C	D	E
LPV DA*	461/18		200	(200-½)	
LNAV/VNAV DA**	687/40		426	(500-¾)	
LNAV MDA***	700/24 439 (500-½)		700/40	439 (500-¾)	
CIRCLING****	780-1 500 (500-1)		780-1½ 500 (500-1½)	840-2 560 (600-2)	

CAMP SPRINGS, MARYLAND  
Amdt 4 02DEC21

38°49'N - 76°52'W

JOINT BASE ANDREWS (KADW)

# RNAV (GPS) Z RWY 1L

NE-3, 02 DEC 2021 to 30 DEC 2021

NE-3, 02 DEC 2021 to 30 DEC 2021