

CAMP SPRINGS, MARYLAND

TACAN RWY 19R

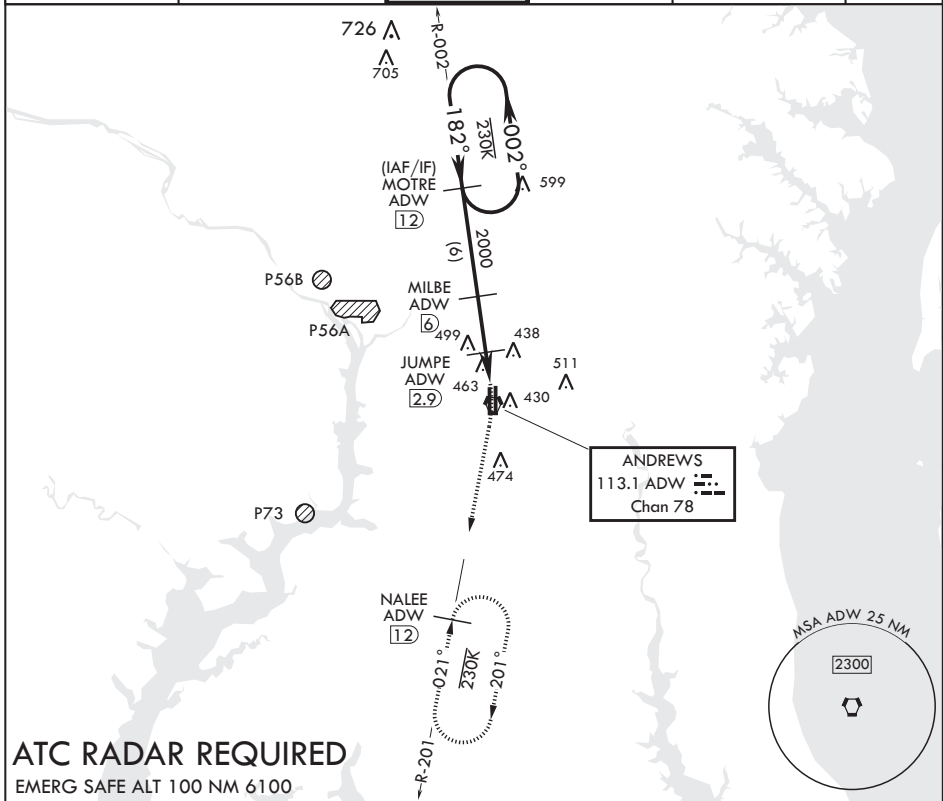
VORTAC ADW 113.1 Chan 78	APCH CRS 182°	Rwy ldg TDZE 274 Arprt Elev 280	9318 274 280
--------------------------------	------------------	--	--------------------

AL-561 (USAF)

JOINT BASE ANDREWS (KADW)

ALSIF-2 MISSED APPROACH: Climbing to 2500, intercept ADW VORTAC R-201 to NALEE and hold.
 * When ALS inop, increase CAT AB RVR to 55, vis to 1 mile, CAT CDE vis to 1 3/8 miles.
 ** Circling not authorized W of Rwy 1L-19R.

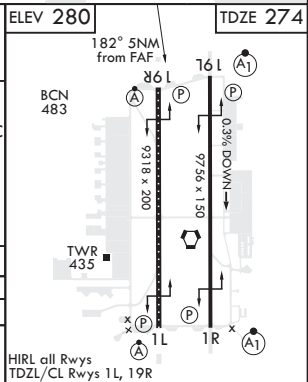
ATIS 133.675 251.05	POTOMAC APP CON 128.0 335.5	TOWER 118.4 349.0	GND CON 121.8 275.8	CLNC DEL 127.55 285.475	CPDLC
------------------------	--------------------------------	----------------------	------------------------	----------------------------	-------



ATC RADAR REQUIRED

EMERG SAFE ALT 100 NM 6100

MOTRE R-002 (12)		2500 ADW R-201		NALEE ADW (12)		ELEV 280		TDZE 274	
2500 ← 002°		182° →		182° ↘		MILBE (6)		JUMPE (2.9)	
2000		960		2.2		BIMKE (1.2)		VORTAC	
↑ MILBE to MAP		3.1 NM		1.7 NM		.2		BCN 483	
† 3.11° ≥ TCH 71								TWR 435	
CATEGORY	A	B	C	D	E				
S-19R*	740/24	466 (500-1/2)	740/50	466	(500-1)				
CIRCLING**	780-1	501 (600-1)	780-1/2 501 (600-1/2)	840-2	561 (600-2)				



CAMP SPRINGS, MARYLAND

38°49'N - 76°52'W

JOINT BASE ANDREWS (KADW)

Amdt 1 02MAR17

TACAN RWY 19R

NE-3, 02 DEC 2021 to 30 DEC 2021

NE-3, 02 DEC 2021 to 30 DEC 2021