

CAMP SPRINGS, MARYLAND

# TACAN RWY 1L

VORTAC ADW 113.1 Chan 78	APCH CRS 021°	Rwy ldg TDZE Arpt Elev	9318 261 280
--------------------------------	------------------	------------------------------	--------------------

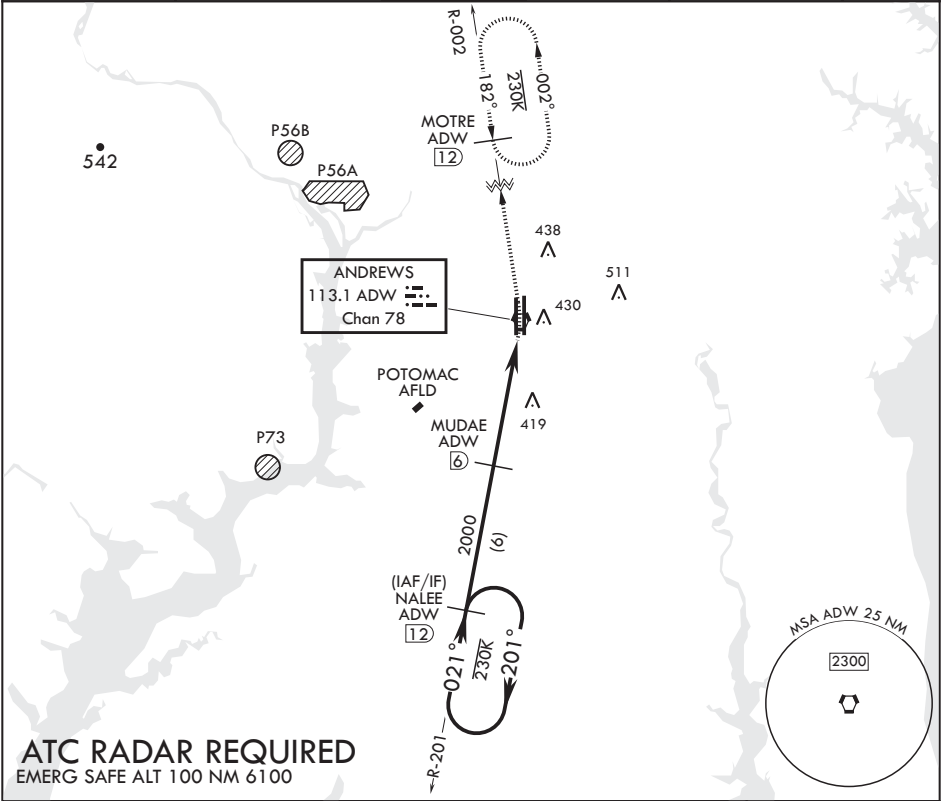
AL-561 (USAF)

JOINT BASE ANDREWS (KADW)

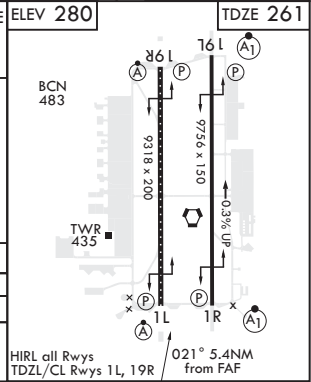
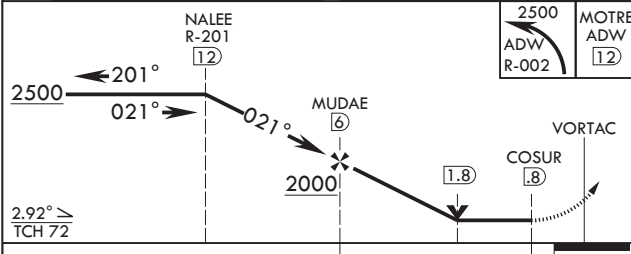
⚠ \* When ALS inop, increase CAT AB RVR to 55, vis to 1 mile, CAT CDE vis to 1 3/8 miles.  
\*\* Circling not authorized W of Rwy 1L-19R.

ALS-F-2 MISSED APPROACH: Climb to 2500 via ADW VORTAC R-002 to MOTRE/ADW 12 DME and hold.

ATIS 133.675 251.05	POTOMAC APP CON 128.0 335.5	TOWER 118.4 349.0	GND CON 121.8 275.8	CLNC DEL 127.55 285.475	CPDLC
------------------------	--------------------------------	----------------------	------------------------	----------------------------	-------



**ATC RADAR REQUIRED**  
EMERG SAFE ALT 100 NM 6100



CATEGORY	A	B	C	D	E
S-1L*	720/24 459 (500-1/2)		720/45 459 (500-3/8)		
CIRCLING**	780-1 501 (600-1)		780-1 1/2 501 (600-1 1/2)	840-2 561 (600-2)	

HIRL all Rwys TDZL/CL Rwys 1L, 19R 021° 5.4NM from FAF

CAMP SPRINGS, MARYLAND

38°49'N - 76°52'W

JOINT BASE ANDREWS (KADW)

Amdt 1 02MAR17

# TACAN RWY 1L

NE-3, 02 DEC 2021 to 30 DEC 2021

NE-3, 02 DEC 2021 to 30 DEC 2021