

LOC/DME I-PNC <b>111.9</b> Chan <b>56</b>	APP CRS <b>175°</b>	Rwy Idg <b>7201</b> TDZE <b>1004</b> Apt Elev <b>1009</b>
---	------------------------	---

# ILS or LOC/DME RWY 17

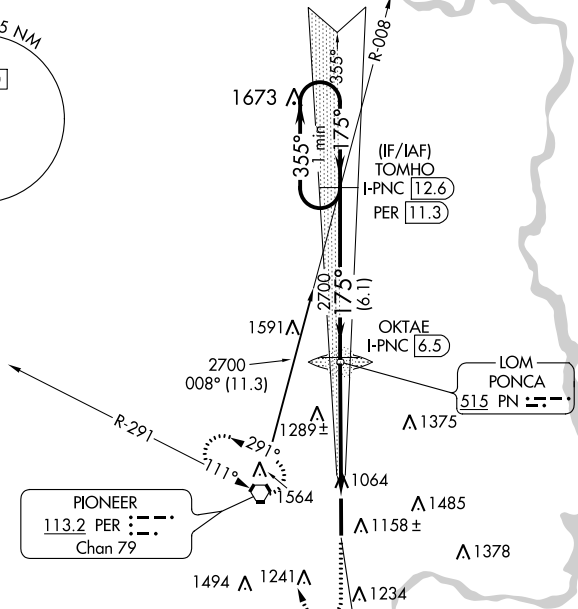
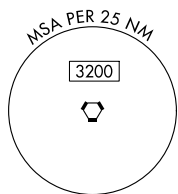
PONCA CITY RGNL (PNC)

**NA** When local altimeter setting not received, use Winfield-Arkansas City altimeter setting and increase S-ILS 17 DA to 1286 feet and all MDA 100 feet; increase S-LOC Cat C and D and Circling Cat C and D visibility ¼ SM. For inop MALS, when using Winfield-Arkansas City altimeter setting, increase S-ILS 17 visibility to 1 mile all Cats. VDP NA when using Winfield-Arkansas City altimeter setting.

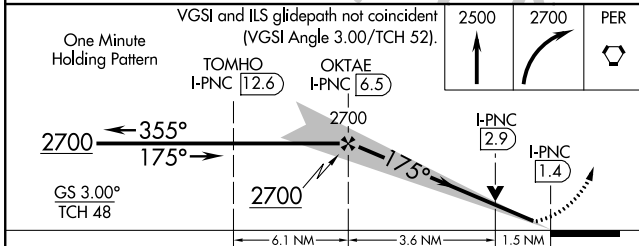
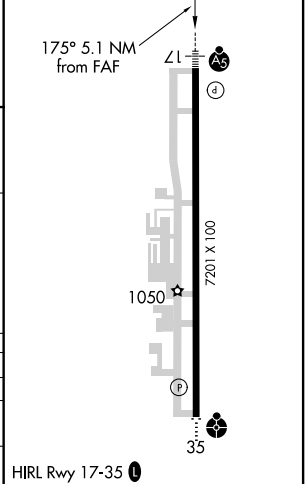


**MISSED APPROACH:**  
Climb to 2500 then climbing right turn to 2700 direct PER VORTAC and hold.

ASOS <b>134.075</b>	KANSAS CITY CENTER <b>127.8 319.1</b>	UNICOM <b>123.0 (CTAF)</b>
------------------------	--	-------------------------------



ELEV 1009	TDZE 1004
-----------	-----------



CATEGORY	A	B	C	D
S-ILS 17		1204-½	200 (200-½)	
S-LOC 17	1520-½ 516 (600-½)		1520-1 516 (600-1)	1520-1¼ 516 (600-1¼)
CIRCLING	1520-1 511 (600-1)	1580-1 571 (600-1)	1800-2¼ 791 (800-2¼)	1880-2¾ 871 (900-2¾)

HIRL Rwy 17-35

SC-1, 02 DEC 2021 to 30 DEC 2021

SC-1, 02 DEC 2021 to 30 DEC 2021