

WAAS CH 50408 W17A	APP CRS 175°	Rwy Idg TDZE Apt Elev	7201 1004 1009
--	------------------------	-----------------------------	---

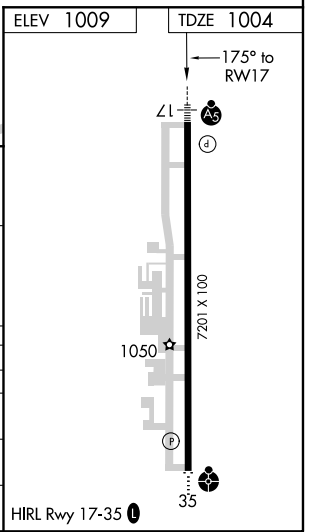
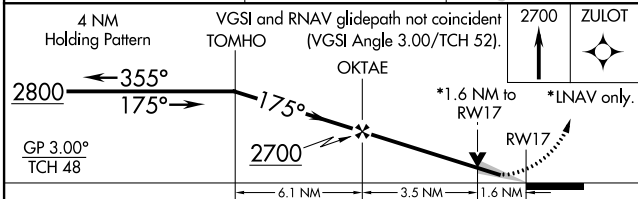
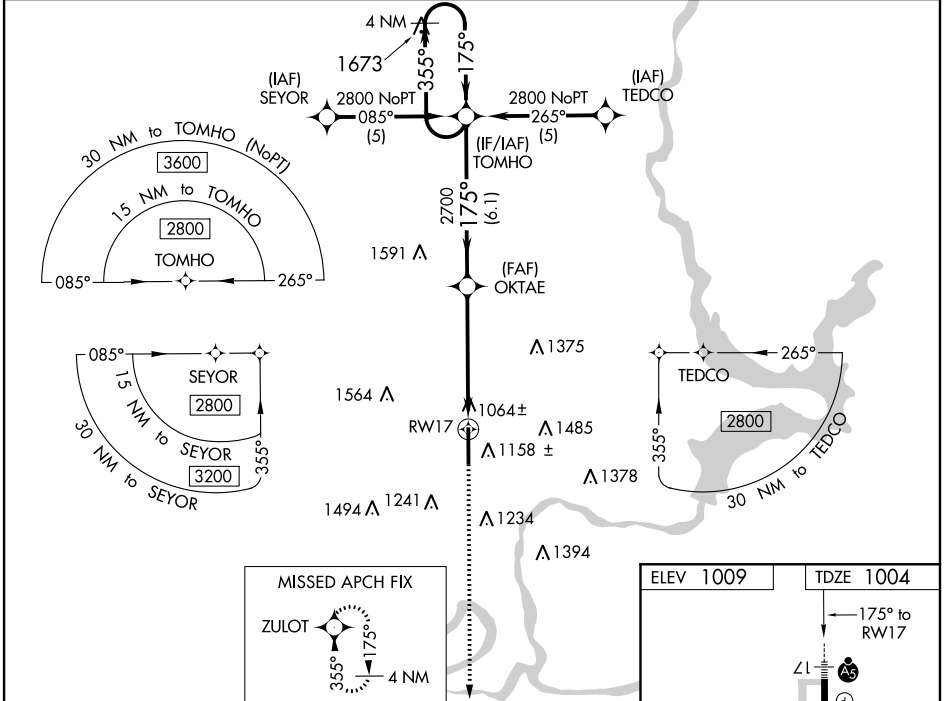
RNAV (GPS) RWY 17

PONCA CITY RGNL (PNC)

⚠ For inop MALS, increase LPV visibility to 1 mile. For uncompensated Baro-VNAV systems, LNAV/VNAV NA below -17°C (2°F) or above 47°C (116°F). DME/DME RNP-0.3 NA. When local altimeter setting not received use Winfield-Arkansas City altimeter setting and increase all LPV DA to 1361 feet, LNAV/VNAV DA to 1412 feet and all MDA 100 feet; increase LPV all Cats, LNAV/VNAV all Cats, LNAV Cats C and D and Circling Cat C and D visibility ¼ SM. VDP NA when using Winfield-Arkansas City altimeter setting. For inop MALS when using Winfield-Arkansas City altimeter setting, increase LPV and LNAV/VNAV visibility ¼ mile all Cats, increase LNAV Cats C and D visibility ¼ mile. Baro-VNAV NA when using Winfield-Arkansas City altimeter setting.

MALS
MISSED APPROACH:
Climb to 2700 direct ZULOT and hold.

ASOS 134.075	KANSAS CITY CENTER 127.8 319.1	UNICOM 123.0 (CTAF)
------------------------	--	-------------------------------



CATEGORY	A	B	C	D
LPV DA		1279-½	275 (300-½)	
LNAV/VNAV DA		1330-¾	326 (400-¾)	
LNAV MDA	1540-½	536 (600-½)	1540-1	1540-1¼
			536 (600-1)	536 (600-1¼)
CIRCLING	1540-1	1580-1	1800-2¼	1880-2¾
	531 (600-1)	571 (600-1)	791 (800-2¼)	871 (900-2¾)

SC-1, 02 DEC 2021 to 30 DEC 2021

SC-1, 02 DEC 2021 to 30 DEC 2021