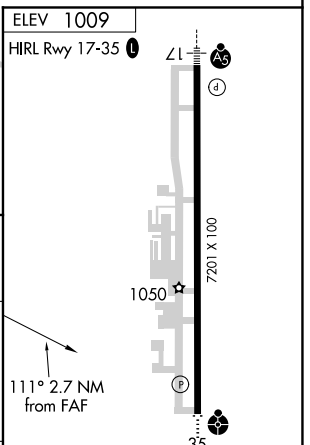
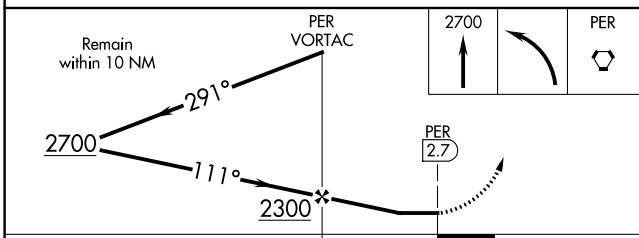
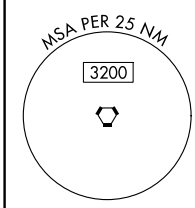
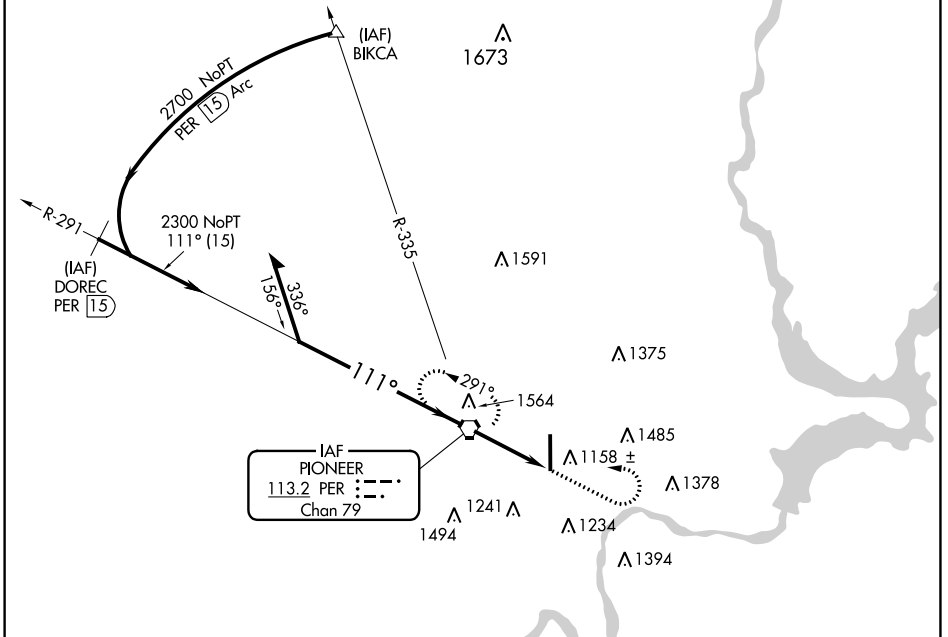


VORTAC PER 113.2 Chan 79	APP CRS 111°	Rwy Idg TDZE Apt Elev N/A N/A 1009
--	------------------------	--

VOR-A
PONCA CITY RGNL (PNC)

MISSED APPROACH: Climb to 2700 then left turn direct PER VORTAC and hold.

ASOS 134.075	KANSAS CITY CENTER 127.8 319.1	UNICOM 123.0 (CTAF) 0
------------------------	--	---------------------------------



CATEGORY	FAF to MAP 2.7 NM				
	A	B	C	D	
CIRCLING	1520-1 511 (600-1)	1580-1 571 (600-1)	1800-2¼ 791 (800-2¼)	1880-2¾ 871 (900-2¾)	
	Knots 60 90 120 150 180	Min:Sec 2:42 1:48 1:21 1:05 0:54			

SC-1, 02 DEC 2021 to 30 DEC 2021

SC-1, 02 DEC 2021 to 30 DEC 2021